

4000 FT. TO KY. 272

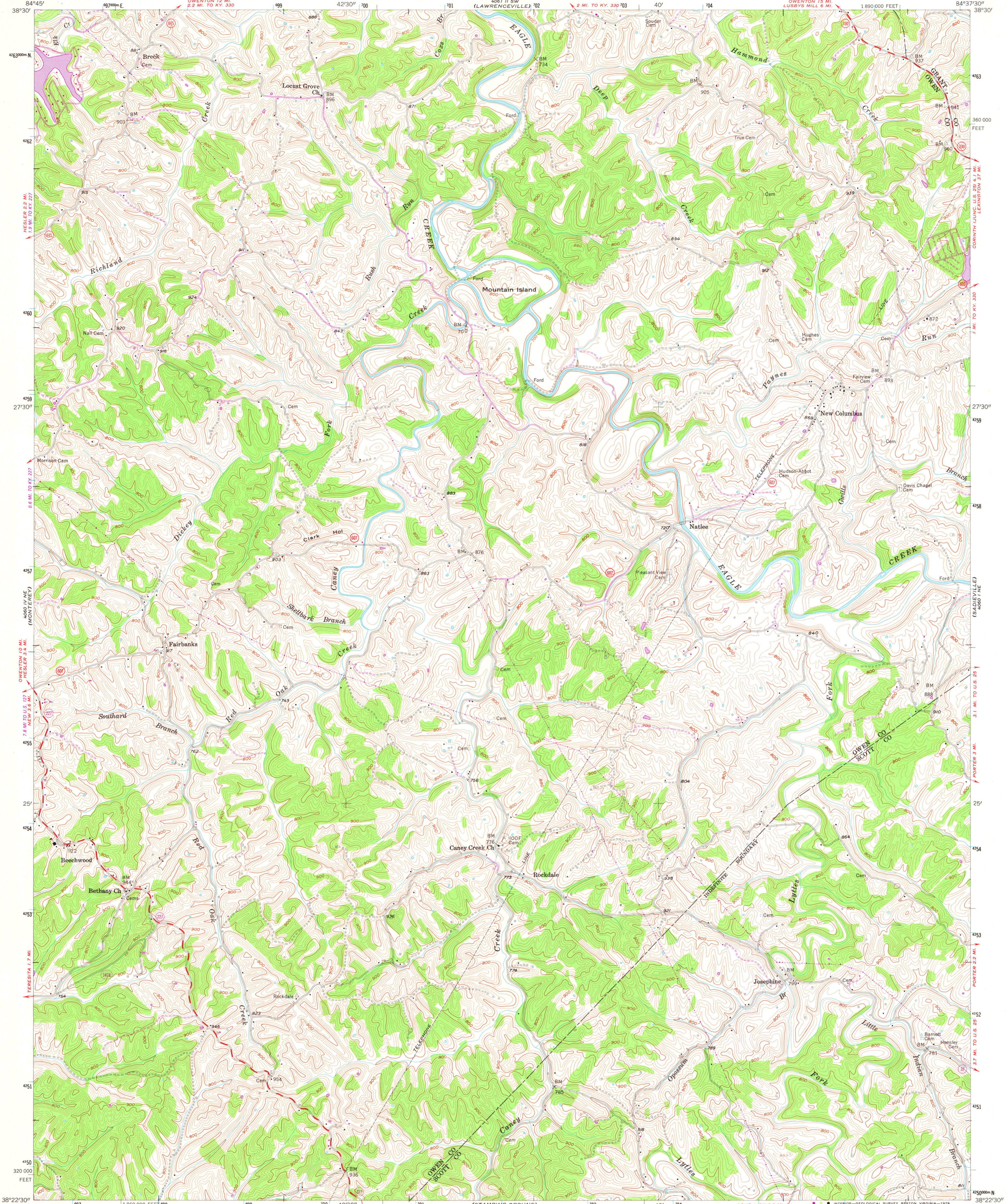
UNITED STATES DEPARTMENT OF THE INTERIOR GEOLOGICAL SURVEY



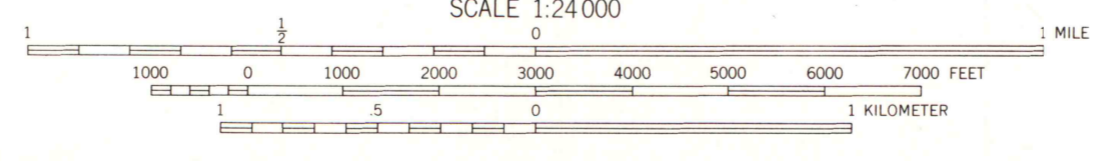
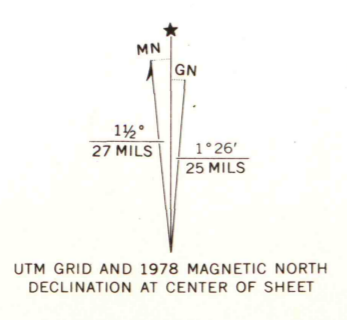
STATE OF KENTUCKY AGRICULTURAL AND INDUSTRIAL DEVELOPMENT BOARD

NEW COLUMBUS QUADRANGLE KENTUCKY 7.5 MINUTE SERIES (TOPOGRAPHIC)

4000 FT. TO KY. 272



Mapped, edited, and published by the Geological Survey Control by USGS and USC&GS. Topography from aerial photographs by multiplex methods. Polyconic projection, 1927 North American datum. Revisions shown in purple compiled from aerial photographs taken 1976 and other source data.



ROAD CLASSIFICATION table with symbols for heavy-duty, medium-duty, 4-lane, and 1-lane roads, as well as U.S. and State routes.

CONTOUR INTERVAL 20 FEET NATIONAL GEODETIC VERTICAL DATUM OF 1929. THIS MAP COMPLIES WITH NATIONAL MAP ACCURACY STANDARDS FOR SALE BY U.S. GEOLOGICAL SURVEY, RESTON, VIRGINIA 22092.



MAP AND AIR PHOTO LIBRARY

NEW COLUMBUS, KY. N3822.5-W8437.517.5

MAY 24 1979

1953 PHOTO REVISSED 1978 AMS 4060 1 NW-SERIES Y853

University of Wisconsin Madison