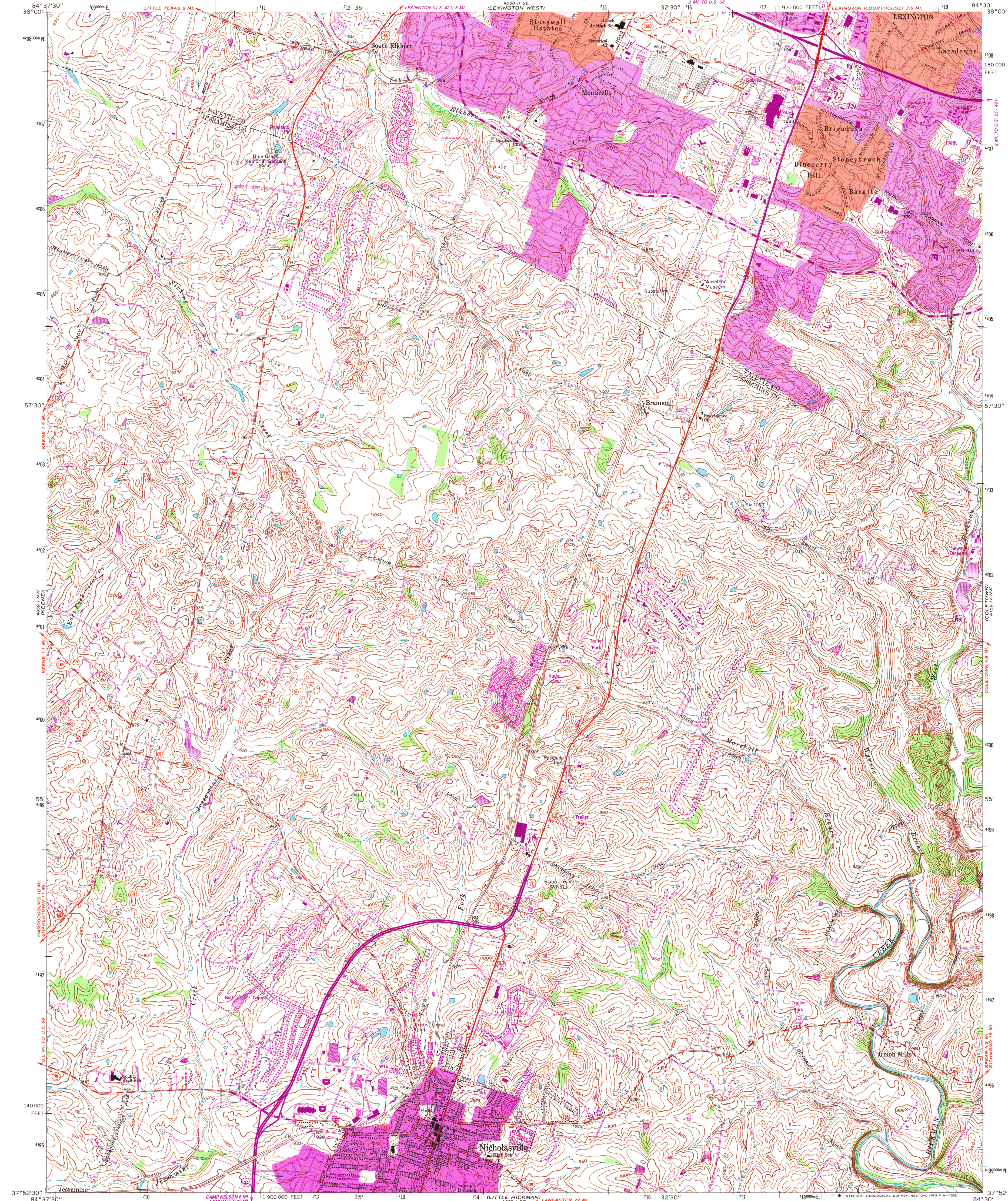


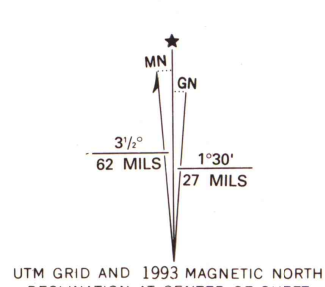
UNITED STATES
DEPARTMENT OF THE INTERIOR
GEOLOGICAL SURVEY

STATE OF KENTUCKY
KENTUCKY GEOLOGICAL SURVEY
UNIVERSITY OF KENTUCKY

NICHOLASVILLE QUADRANGLE
KENTUCKY
7.5 MINUTE SERIES (TOPOGRAPHIC)
NE 1/4 NICHOLASVILLE 15' QUADRANGLE



Produced by the United States Geological Survey
Control by USGS, NOS/NOAA and Kentucky Geodetic Survey
Topography by photogrammetric methods from aerial photographs taken 1950. Field checked 1952. Revised 1965
Projection and 10,000-foot grid ticks: Kentucky coordinate system, north zone (Lambert conformal conic)
1000-meter Universal Transverse Mercator grid ticks, zone 16, shown in blue
1927 North American Datum (NAD 27)
North American Datum of 1983 (NAD 83) is shown by dashed corner ticks
The values of the shift between NAD 27 and NAD 83 for 7.5-minute intersections are given in USGS Bulletin 1875
Red tint indicates areas in which only landmark buildings are shown
Fine red dashed lines indicate selected fence and field lines where generally visible on aerial photographs. This information is unchecked



SCALE 1:24,000
CONTOUR INTERVAL 10 FEET
NATIONAL GEODETIC VERTICAL DATUM OF 1929

THIS MAP COMPLIES WITH NATIONAL MAP ACCURACY STANDARDS
FOR SALE BY U.S. GEOLOGICAL SURVEY, DENVER, COLORADO 80225, OR RESTON, VIRGINIA 22092
KENTUCKY GEOLOGICAL SURVEY, LEXINGTON, KENTUCKY 40506
AND KENTUCKY DEPARTMENT OF COMMERCE, FRANKFORT, KENTUCKY 40601
A FOLDER DESCRIBING TOPOGRAPHIC MAPS AND SYMBOLS IS AVAILABLE ON REQUEST

ARTHUR H. ROBINSON MAP LIBRARY
University of Wisconsin-Madison
OCT 06 1993
U.S. Regional
Depository Copy
DO NOT DISCARD



ROAD CLASSIFICATION
Primary highway, hard surface
Secondary highway, hard surface
Unimproved road
Interstate Route
U.S. Route
State Route

NICHOLASVILLE, KY.
NE 1/4 NICHOLASVILLE 15' QUADRANGLE
37084-HS-1F-024
1965
REVISED 1993
DMA 4059.1 NE-SERIES V853

Revisions shown in purple and woodland compiled in cooperation with State of Kentucky agencies from aerial photographs taken 1988 and other sources. Contours not revised. This information not field checked. Map edited 1993
Purple tint indicates extension of urban areas