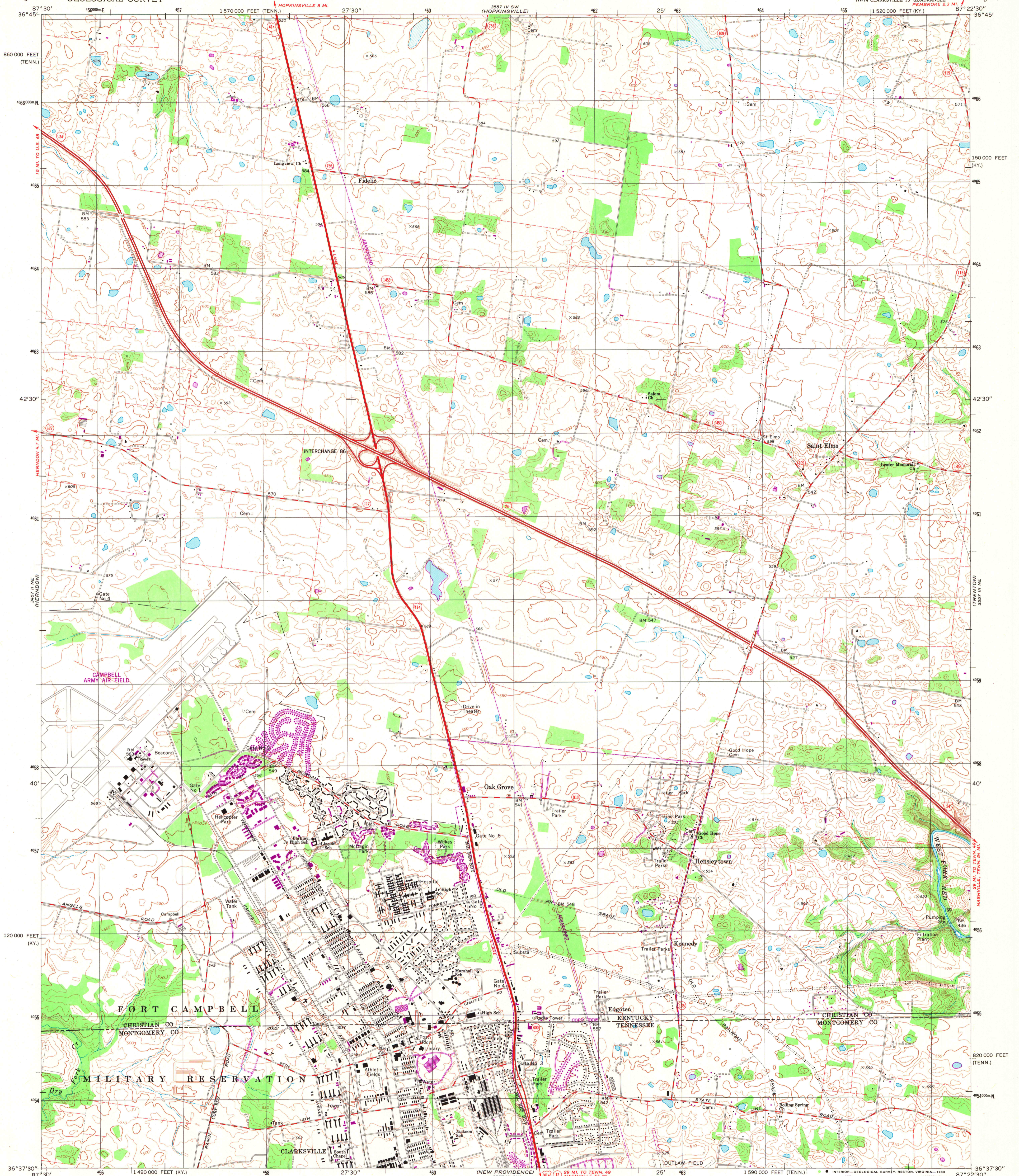
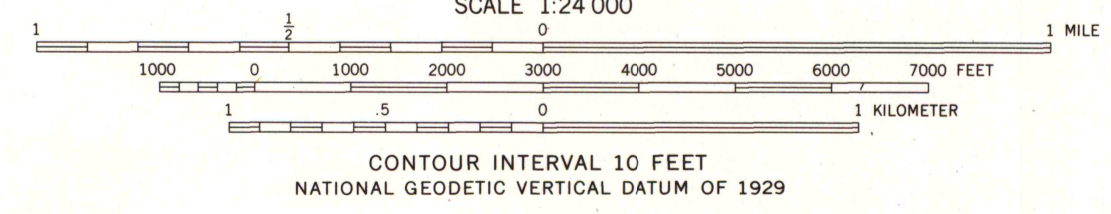
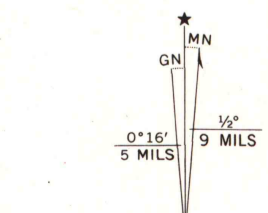


UNITED STATES
DEPARTMENT OF THE INTERIOR
GEOLOGICAL SURVEY

OAK GROVE QUADRANGLE
KENTUCKY-TENNESSEE
7.5 MINUTE SERIES (TOPOGRAPHIC)
NW/4 CLARKSVILLE 15' QUADRANGLE
PEMBROKE 2.3 MI.



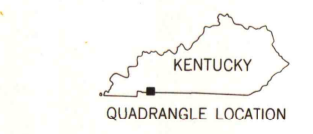
Mapped by the Army Map Service
Edited and published by the Geological Survey
Revised by the Geological Survey in cooperation
with Kentucky Geological Survey
Control by USGS, NOS/NOAA, and USCE
Topography by photogrammetric methods from aerial photographs
taken 1951. Field checked 1951. Revised from aerial photographs
taken 1974. Field checked 1974. Map edited 1979
Polyconic projection. 10,000-foot grid ticks based on Kentucky
coordinate system, south zone and Tennessee coordinate
system. 1000-meter Universal Transverse Mercator grid,
zone 16, 1927 North American Datum. To place on the
predicted North American Datum 1983 move the projection
lines 5 meters south and 2 meters east as shown
by dashed corner ticks
Fine red dashed lines indicate selected fence and field lines where
generally visible on aerial photographs. This information is uncheckd
There may be private inholdings within the boundaries of
the National or State reservations shown on this map



ROAD CLASSIFICATION

Primary highway, hard surface	Light-duty road, hard or improved surface
Secondary highway, hard surface	Unimproved road
Interstate Route	U.S. Route
	State Route

THIS MAP COMPLIES WITH NATIONAL MAP ACCURACY STANDARDS
FOR SALE BY U.S. GEOLOGICAL SURVEY, RESTON, VIRGINIA 22092,
KENTUCKY GEOLOGICAL SURVEY, LEXINGTON, KENTUCKY 40506,
KENTUCKY DEPARTMENT OF COMMERCE, FRANKFORT, KENTUCKY 40601,
AND TENNESSEE DEPARTMENT OF CONSERVATION, DIVISION OF GEOLOGY, NASHVILLE, TENN. 37219
A FOLDER DESCRIBING TOPOGRAPHIC MAPS AND SYMBOLS IS AVAILABLE ON REQUEST



OAK GROVE, KY.-TENN.
NW/4 CLARKSVILLE 15' QUADRANGLE
N3637.5-WB722.5/7.5
1979
PHOTOREVISED 1982
DMA 3557 III NW-SERIES V853
ARTHUR H. ROBINSON MAP LIBRARY
University of Wisconsin-Madison

A.H. ROBINSON
LIBRARIAN
NOV - 8 1983