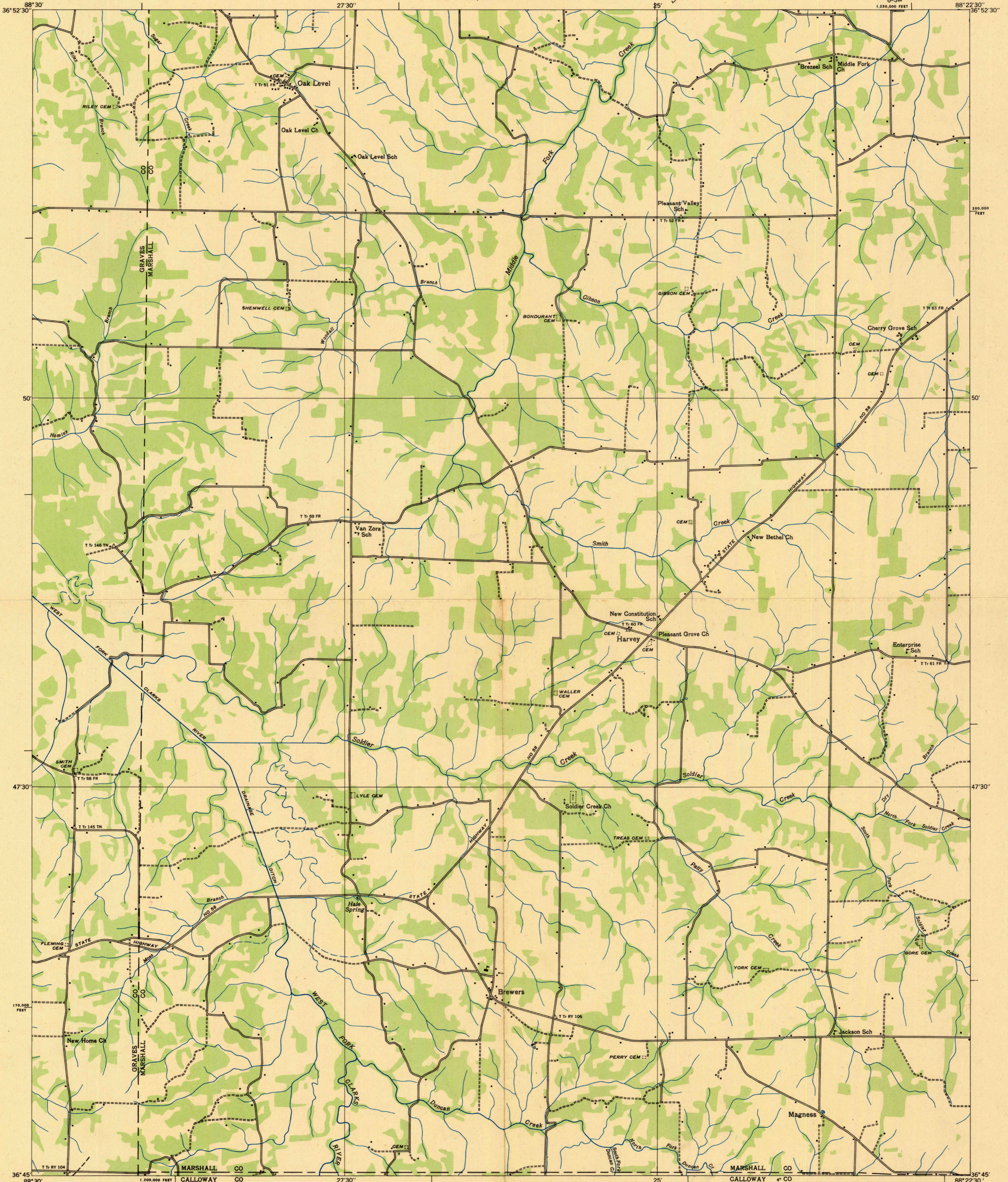
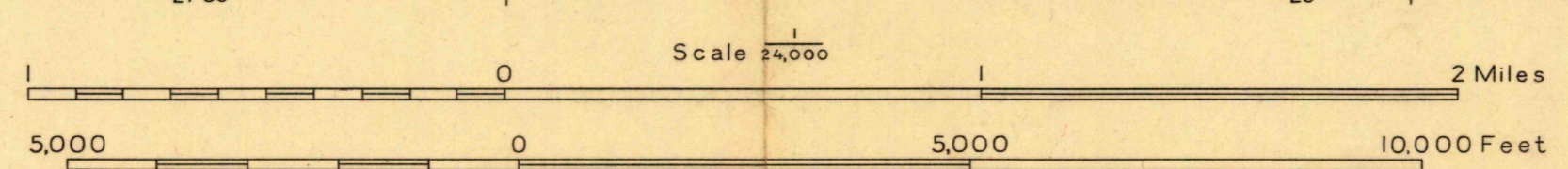


Advance sheet  
Subject to correction



Albert Pike, Division Engineer  
Compiled by U. S. Geological Survey from aerial photographs  
Control by U. S. Geological Survey  
Field examination in 1936



Datum is mean sea level

USGS  
Historical File  
Topographic Division

APPROXIMATE MEAN  
MAGNETIC NORTH  
DECLINATION, 1986

Polygonic projection, 1927 North American datum  
10,000 foot grid based on Kentucky (South)  
rectangular coordinate system

Ridge line  
Probable drainage  
OAK LEVEL, KY.  
6-SW