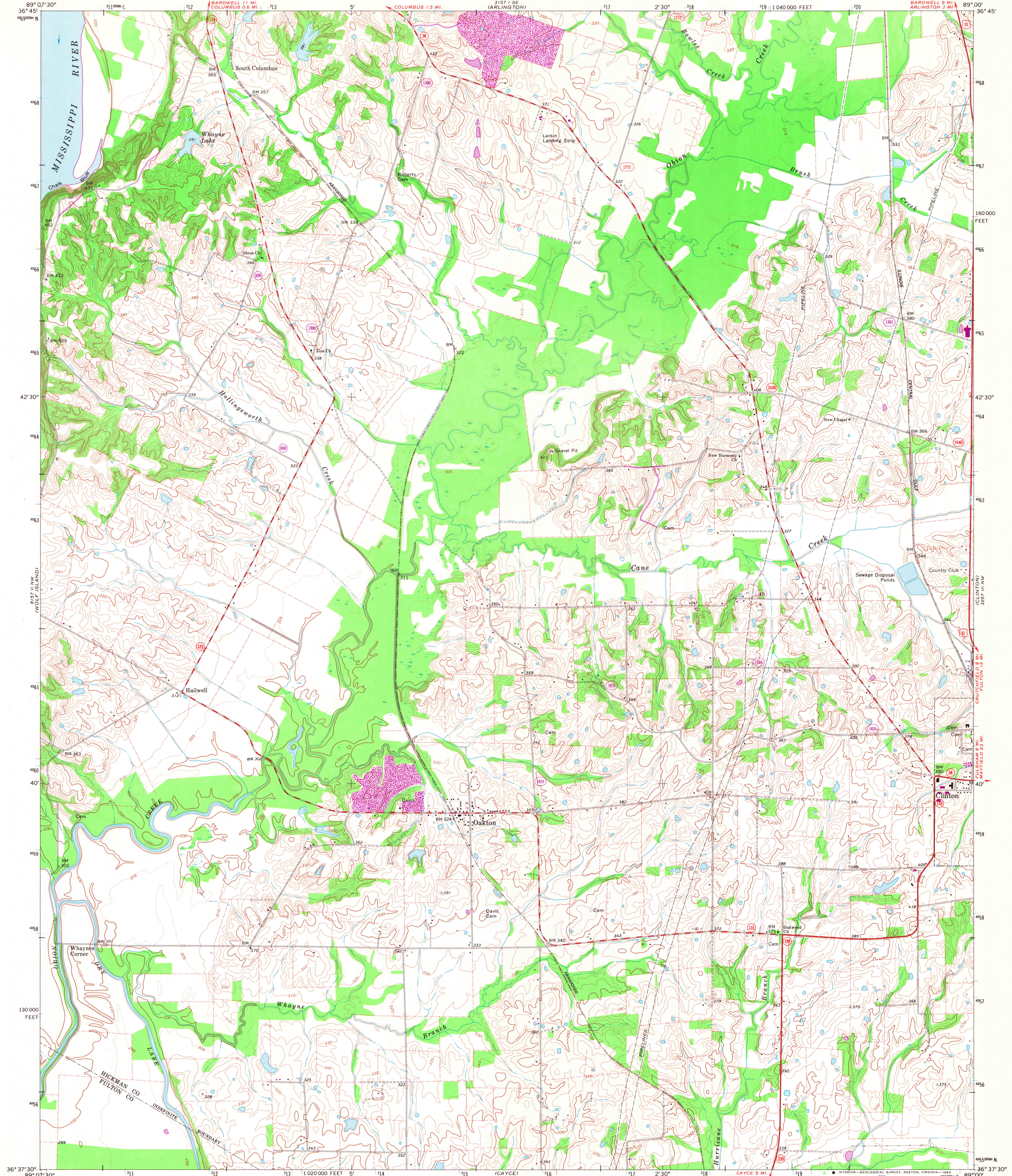
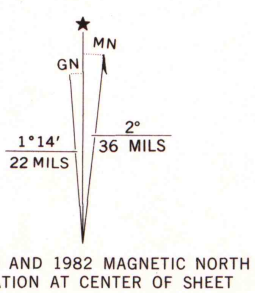


UNITED STATES  
DEPARTMENT OF THE INTERIOR  
GEOLOGICAL SURVEY

OAKTON QUADRANGLE  
KENTUCKY  
7.5 MINUTE SERIES (TOPOGRAPHIC)



Mapped, edited, and published by the Geological Survey  
in cooperation with the State of Kentucky  
Control by USGS and NOS/NOAA  
Planimetry by photogrammetric methods from aerial photographs  
taken 1950. Topography by planetable surveys 1951  
Revised from aerial photographs taken 1969. Field checked 1970  
Polyconic projection. 10,000-foot grid ticks based on Kentucky  
coordinate system, south zone. 1000-meter Universal Transverse  
Mercator grid ticks, zone 16, shown in blue. 1927 North  
American Datum. To place on the predicted North American  
Datum 1983 move the projection lines 5 meters south and 6  
meters east as shown by dashed corner ticks  
Fine red dashed lines indicate selected fence and field lines where  
generally visible on aerial photographs. This information is unchecked



THIS MAP COMPLIES WITH NATIONAL MAP ACCURACY STANDARDS  
FOR SALE BY U.S. GEOLOGICAL SURVEY, RESTON, VIRGINIA 22092,  
KENTUCKY GEOLOGICAL SURVEY, LEXINGTON, KENTUCKY 40506,  
AND KENTUCKY DEPARTMENT OF COMMERCE, FRANKFORT, KENTUCKY 40601  
A FOLDER DESCRIBING TOPOGRAPHIC MAPS AND SYMBOLS IS AVAILABLE ON REQUEST

Revisions shown in purple and woodland compiled in cooperation  
with State of Kentucky agencies from aerial photographs taken  
1981 and other sources. Contours adjusted adjacent to certain  
photorevised hydrographic features. This information not field  
checked. Map edited 1982

ROAD CLASSIFICATION  
Primary highway, all weather, hard surface  
Secondary highway, all weather, hard surface  
Light-duty road, all weather, improved surface  
Unimproved road, fair or dry weather  
U. S. Route  
State Route

OAKTON, KY.  
NE 1/4 HICKMAN 15' QUADRANGLE  
N 3637.5—W 8900/7.5

1970  
PHOTOREVISED 1982  
ARTHUR H. ROBINSON MAP LIBRARY  
University of Wisconsin-Madison  
OCT - 6 1993