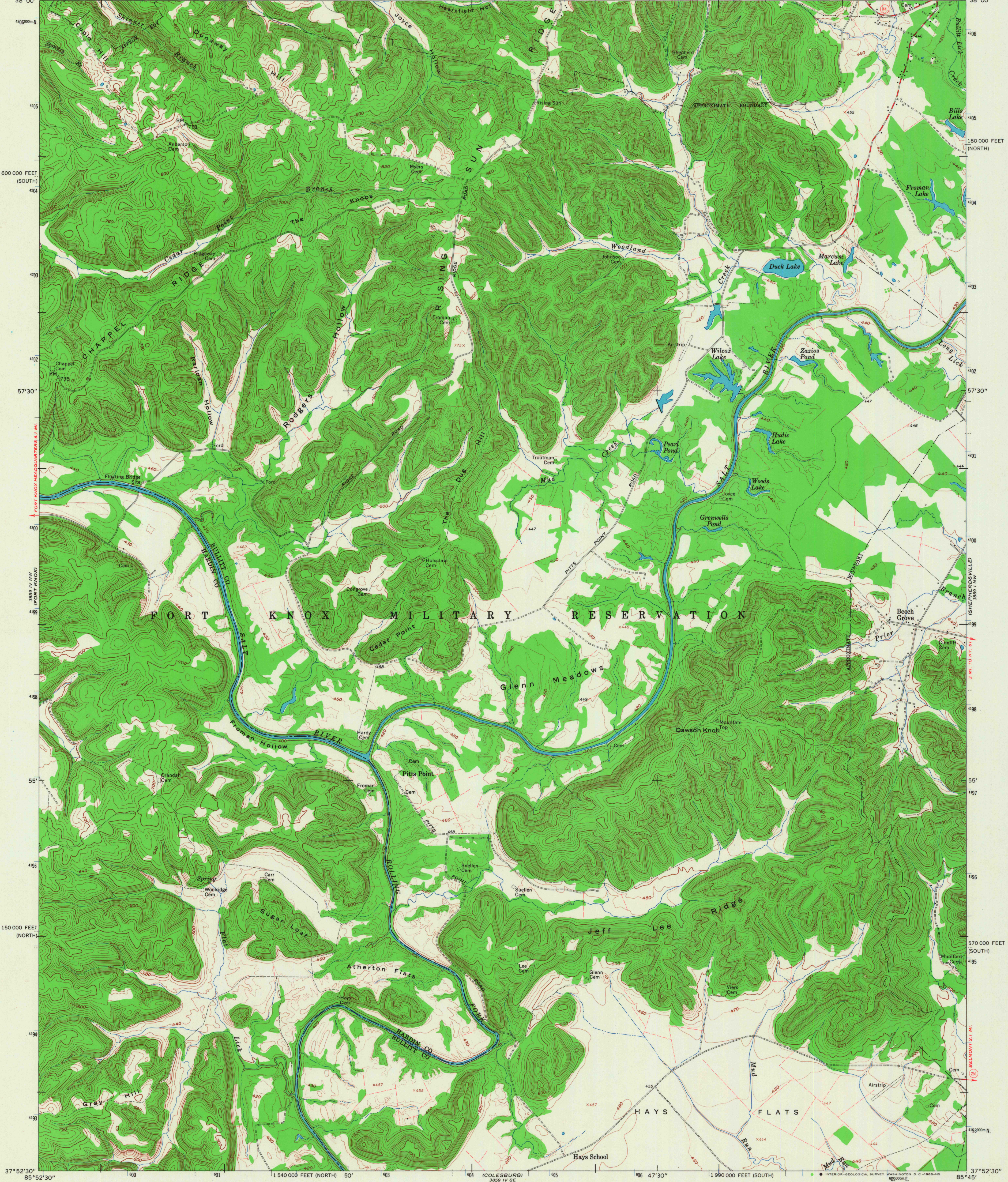
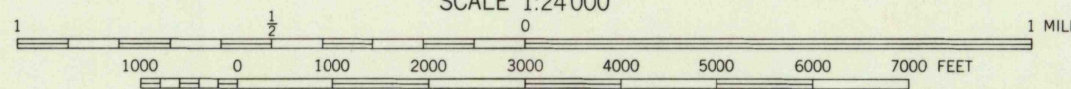


85°52'30" 1970 000 FEET (SOUTH) 401 50' 403 3860 III SE (VALLEY STATION) 47'30" 1 560 000 FEET (NORTH) 85°45' 38'00"



Mapped by the Army Map Service and the Geological Survey
Edited and published by the Geological Survey
Control by USGS and USC&GS
Topography from aerial photographs by photogrammetric methods
Aerial photographs taken 1944. Field checked 1946
Revised by the Geological Survey 1960
Polyconic projection. 1927 North American datum
10,000-foot grids based on Kentucky coordinate system, north
and south zones
1000-meter Universal Transverse Mercator grid ticks,
zone 16, shown in blue
Fine red dashed lines indicate selected fence and field lines where
generally visible on aerial photographs. This information is unchecked



CONTOUR INTERVAL 20 FEET
DOTTED LINES REPRESENT 10-FOOT CONTOURS
DATUM IS MEAN SEA LEVEL

THIS MAP COMPLIES WITH NATIONAL MAP ACCURACY STANDARDS
FOR SALE BY U.S. GEOLOGICAL SURVEY, WASHINGTON, D. C. 20242,
KENTUCKY GEOLOGICAL SURVEY, LEXINGTON, KENTUCKY 40506,
AND KENTUCKY DEPARTMENT OF COMMERCE, FRANKFORT, KENTUCKY 40601
A FOLDER DESCRIBING TOPOGRAPHIC MAPS AND SYMBOLS IS AVAILABLE ON REQUEST

USGS
Historical File
Topographic Division

USGS
TOPOGRAPHIC DIVISION

ROAD CLASSIFICATION
Medium-duty ——— Light-duty ———
Unimproved dirt - - - - -
State Route ○

PITTS POINT, KY.
NE/4 VINE GROVE 15' QUADRANGLE
N3752.5 - W8545/7.5
1960
AMS 3859 IV NE-SERIES V853

3655
MAY 16 1968