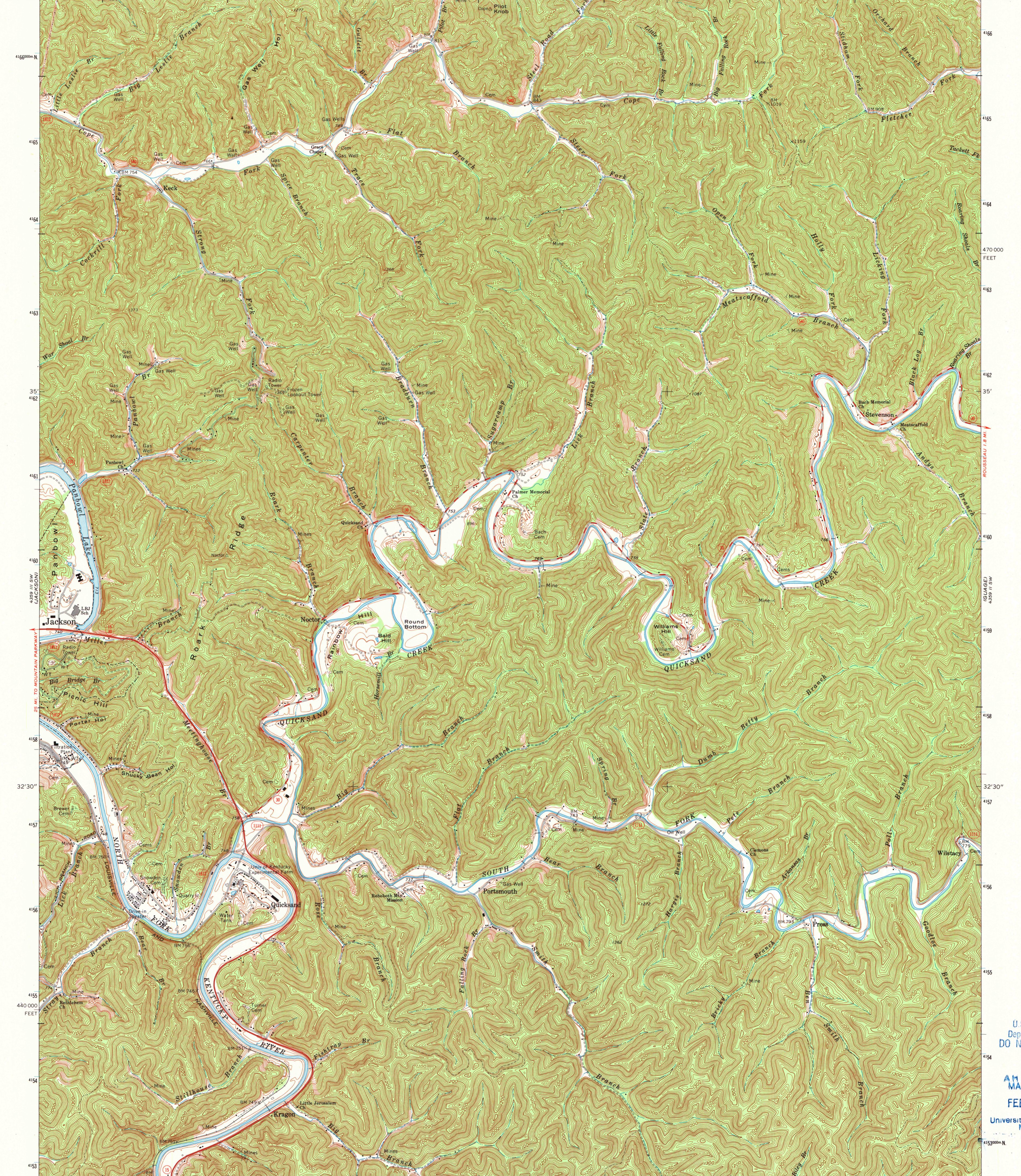
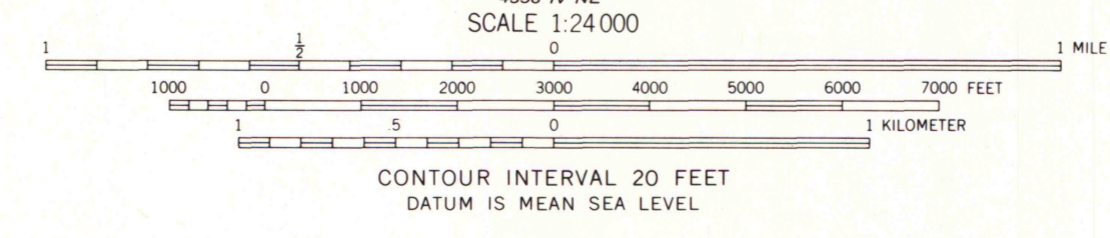
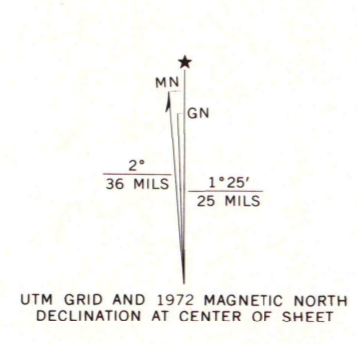


37° 37' 30" 83° 22' 30" 291 20' 294 20' 295 17' 30" 298 17' 30" 299 17' 30" 300 2 720 000 FEET 301 83° 15' 37' 37' 30"



Maped, edited, and published by the Geological Survey
Control by USGS and USC&GS
Topography by photogrammetric methods from aerial photographs
taken 1950. Field checked 1951. Revised from aerial
photographs taken 1971. Field checked 1972
Polyconic projection. 1927 North American datum
10,000-foot grid based on Kentucky coordinate system, south zone
1000-meter Universal Transverse Mercator grid ticks,
zone 17, shown in blue
Map photoinspected 1976
No major culture or drainage changes observed



THIS MAP COMPLIES WITH NATIONAL MAP ACCURACY STANDARDS
FOR SALE BY U. S. GEOLOGICAL SURVEY, DENVER, COLORADO 80225, OR RESTON, VIRGINIA 22092
KENTUCKY GEOLOGICAL SURVEY, LEXINGTON, KENTUCKY 40506
AND KENTUCKY DEPARTMENT OF COMMERCE, FRANKFORT, KENTUCKY 40601
A FOLDER DESCRIBING TOPOGRAPHIC MAPS AND SYMBOLS IS AVAILABLE ON REQUEST



ROAD CLASSIFICATION
Primary highway, hard surface ———— Light-duty road, hard or improved surface ————
Secondary highway, hard surface ———— Unimproved road ————
○ Interstate Route ○ U. S. Route ○ State Route

QUICKSAND, KY.
SE/4 LEE CITY 15' QUADRANGLE
N3730—W8315/7.5
1972
PHOTOINSPECTED 1976
AMS 4359 III SE—SERIES V853

U.S. Regional
Depository Copy
DO NOT DISCARD
AM FOUND
MAP LIBRARY
FEB 22 1991
University of Wisconsin
Madison