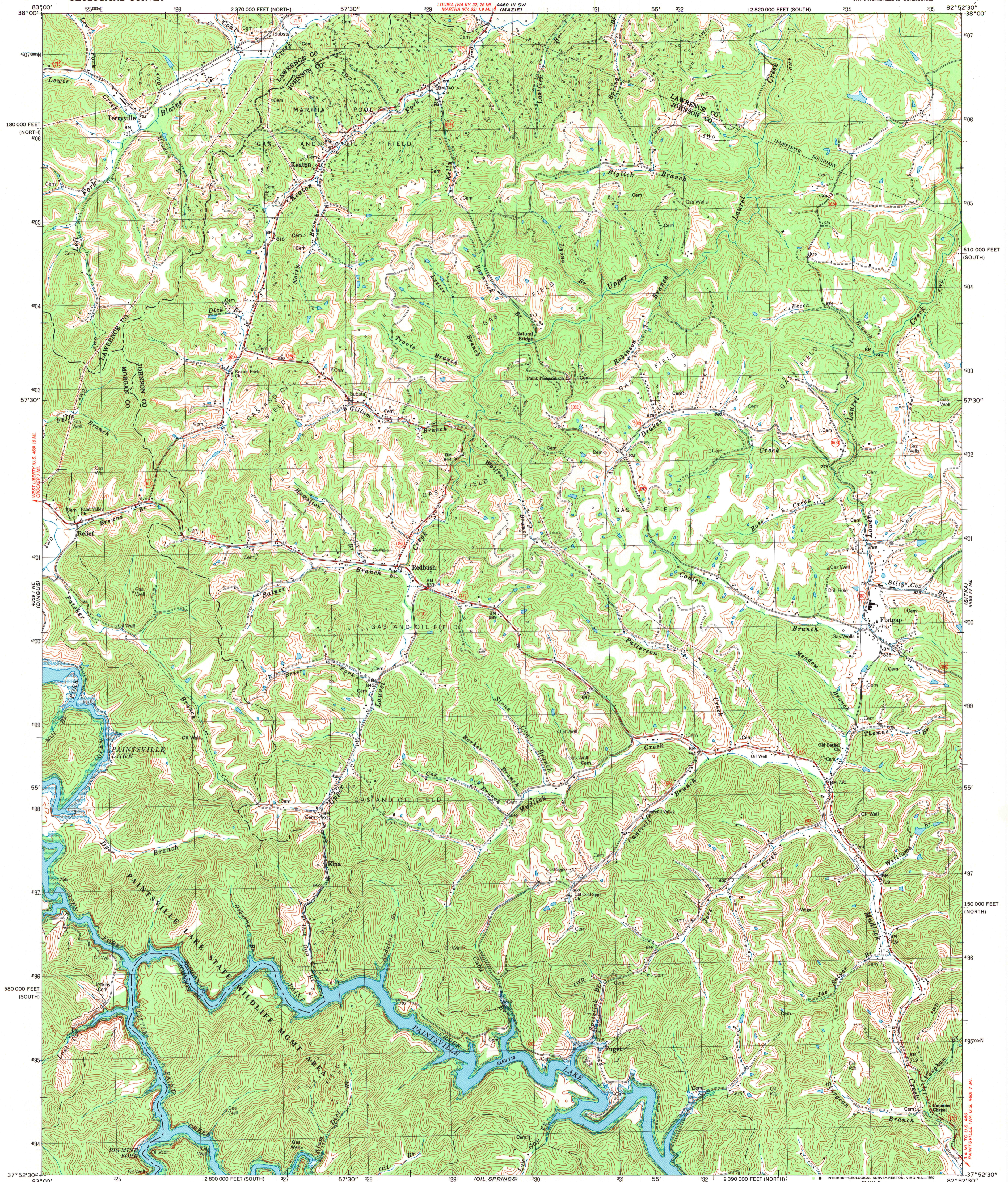
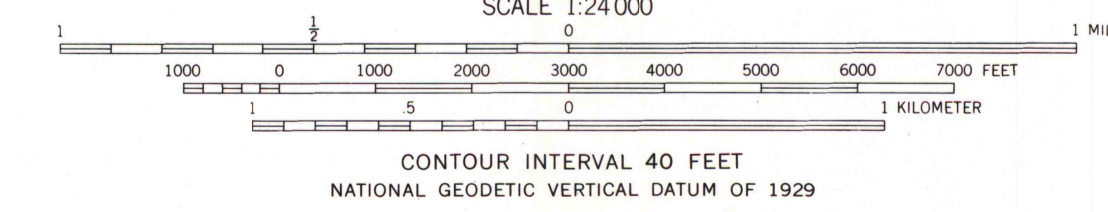
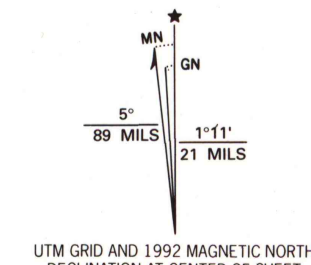


UNITED STATES
DEPARTMENT OF THE INTERIOR
GEOLOGICAL SURVEY

REDBUSH QUADRANGLE
KENTUCKY
7.5 MINUTE SERIES (TOPOGRAPHIC)
NW/4 PAINTSVILLE 15 QUADRANGLE



Produced by the United States Geological Survey
in cooperation with Kentucky Geological Survey
Control by USGS and NOS/NOAA
Topography by photogrammetric methods from aerial photographs
taken 1951. Field checked 1954. Revised from aerial photographs
taken 1988. Field checked 1990. Map edited 1992
Projection: Kentucky coordinate system, south zone
(Lambert conformal conic)
10,000-foot grid ticks: Kentucky coordinate
system, south and north zones
100-meter Universal Transverse Mercator grid, zone 17
1927 North American Datum
The difference between 1927 North American Datum and North
American Datum of 1983 (NAD 83) for 7.5-minute intersections
is given in USGS Bulletin 1875. The NAD 83 is shown by
dashed corner ticks
There may be private inholdings within the boundaries of
the National or State reservations shown on this map
Areas covered by dashed light-blue pattern
are subject to controlled inundation to 731 feet



COMPLIES WITH U.S. GEOLOGICAL SURVEY STANDARDS FOR SPATIAL ACCURACY - CLASS 2
FOR SALE BY U.S. GEOLOGICAL SURVEY, DENVER, COLORADO 80225, OR RESTON, VIRGINIA 22092
KENTUCKY GEOLOGICAL SURVEY, LEXINGTON, KENTUCKY 40506
AND KENTUCKY DEPARTMENT OF COMMERCE, FRANKFORT, KENTUCKY 40601
A FOLDER DESCRIBING TOPOGRAPHIC MAPS AND SYMBOLS IS AVAILABLE ON REQUEST

ROAD CLASSIFICATION

Primary highway, hard surface	Light-duty road, hard or improved surface
Secondary highway, hard surface	Unimproved road
Interstate Route	U.S. Route
	State Route



A.H. ROBINSON
MAP LIBRARY
DEC 21 1992
University of Wisconsin
Madison

REDBUSH, KY.
NW/4 PAINTSVILLE 15 QUADRANGLE
37082-H8-TF-024
1992
DMA 4459 IV NW - SERIES V853