

B10

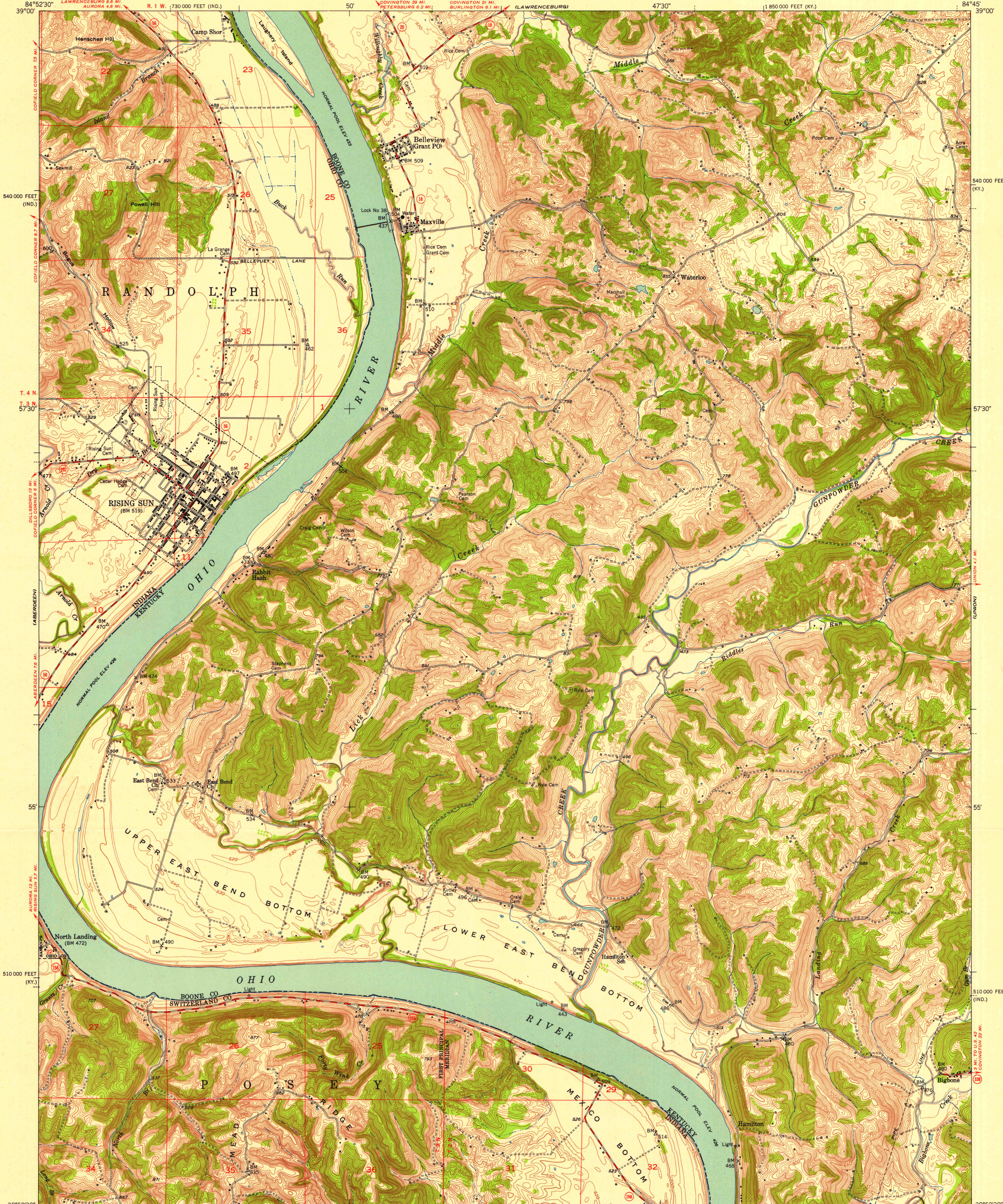
10

UNITED STATES  
DEPARTMENT OF THE INTERIOR  
GEOLOGICAL SURVEY

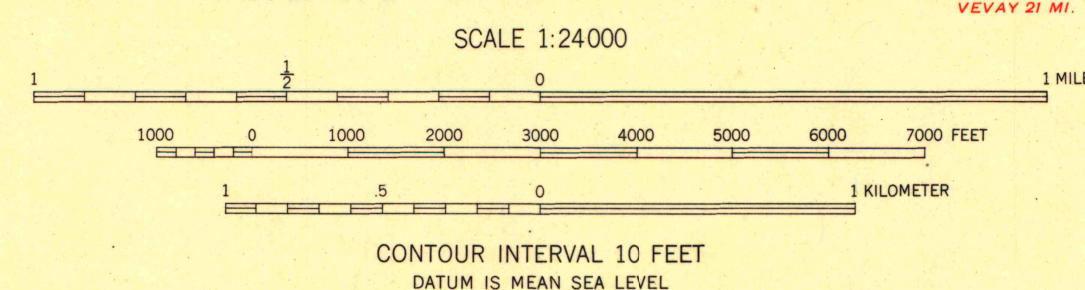
STATE OF INDIANA  
INDIANA DEPARTMENT OF CONSERVATION  
INDIANAPOLIS, INDIANA

STATE OF KENTUCKY  
AGRICULTURAL AND INDUSTRIAL DEVELOPMENT BOARD

RISING SUN QUADRANGLE  
KENTUCKY-INDIANA  
7.5 MINUTE SERIES (TOPOGRAPHIC)  
NE/4 RISING SUN 15' QUADRANGLE



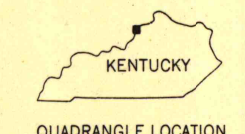
Mapped, edited, and published by the Geological Survey  
Control by USGS, USC&GS, and USCE  
Topography in Kentucky from aerial photographs by multiplex  
methods. Aerial photographs taken 1949. Field check 1951  
Topography in Indiana by plane-table surveys 1940. Revised 1951  
Polyconic projection. 1927 North American datum  
10,000-foot grids based on Kentucky coordinate system,  
north zone, and Indiana coordinate system, east zone



ROAD CLASSIFICATION

|             |                |                 |                |
|-------------|----------------|-----------------|----------------|
| Heavy-duty  | 4 LANE 16 LANE | Light-duty      | 2 LANE 16 LANE |
| Medium-duty | 4 LANE 16 LANE | Unimproved dirt | -----          |

U. S. Route (red line with shield)  
State Route (red line with circle)



RISING SUN, KY-IND.  
NE/4 RISING SUN 15' QUADRANGLE  
N3852.5-W8445/7.5

1951

THIS MAP COMPLIES WITH NATIONAL MAP ACCURACY STANDARDS  
FOR SALE BY U. S. GEOLOGICAL SURVEY, WASHINGTON 25, D. C.,  
INDIANA DEPARTMENT OF CONSERVATION, INDIANAPOLIS, INDIANA,  
AND KENTUCKY AGRICULTURAL AND INDUSTRIAL DEVELOPMENT BOARD, FRANKFORT, KENTUCKY  
A FOLDER DESCRIBING TOPOGRAPHIC MAPS AND SYMBOLS IS AVAILABLE ON REQUEST

UNIVERSITY OF WISCONSIN  
Department of Geography