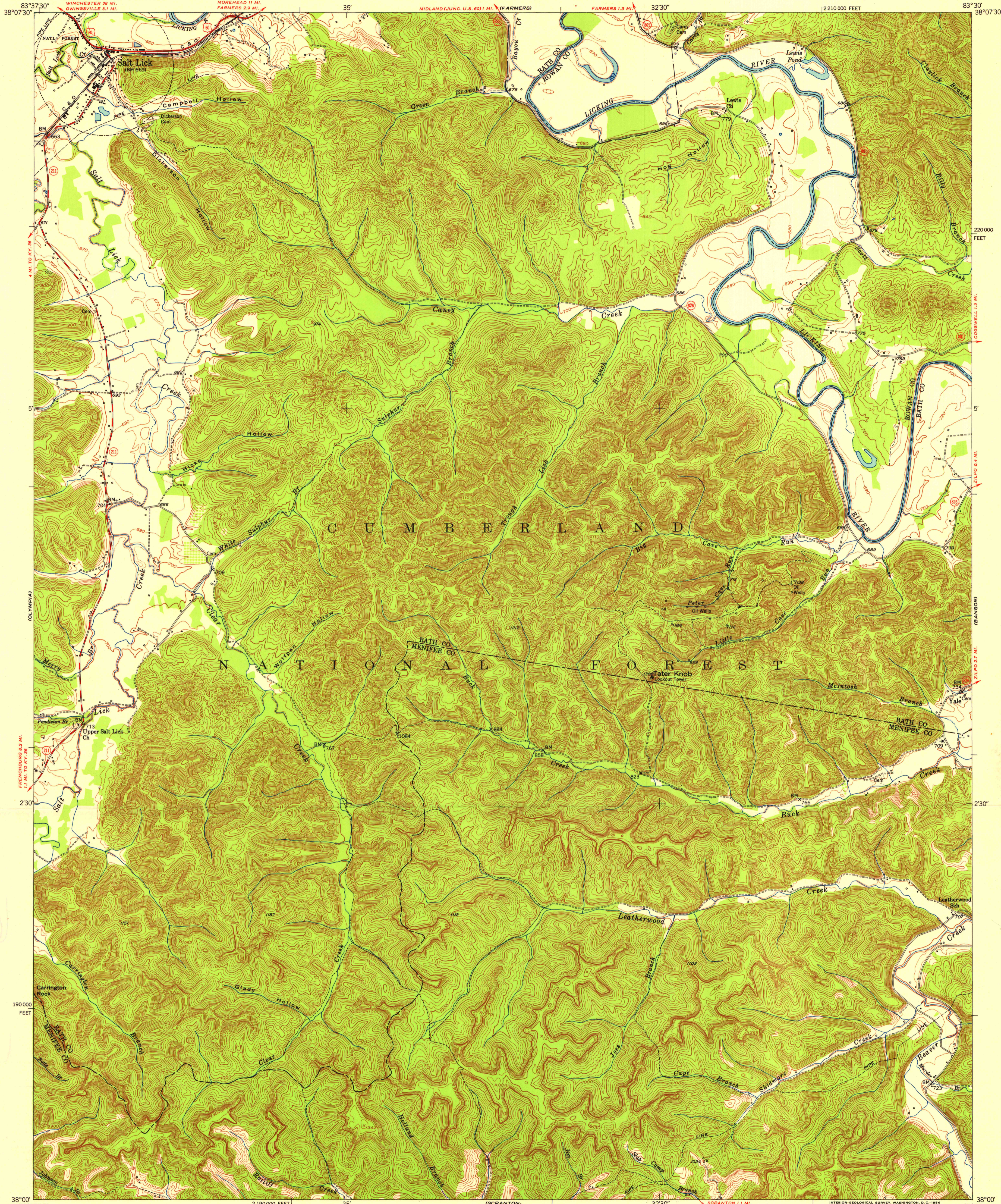


120

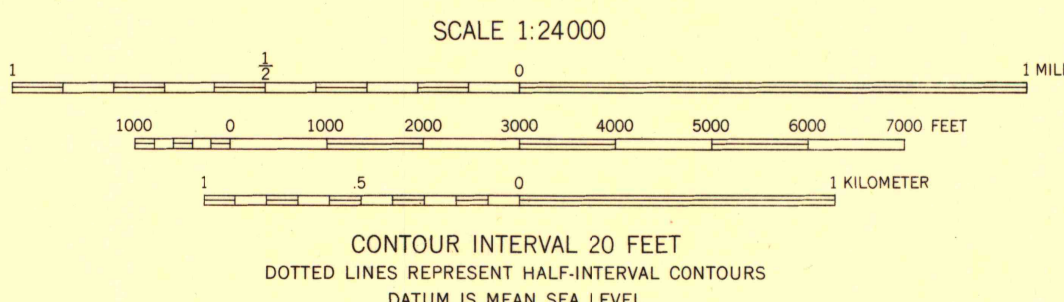
UNITED STATES
DEPARTMENT OF THE INTERIOR
GEOLOGICAL SURVEY

STATE OF KENTUCKY
AGRICULTURAL AND INDUSTRIAL DEVELOPMENT BOARD

SALT LICK QUADRANGLE
KENTUCKY
7.5 MINUTE SERIES (TOPOGRAPHIC)
SE/4 SALT LICK 15' QUADRANGLE



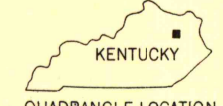
Mapped, edited, and published by the Geological Survey
Control by USGS, USC&GS, and USCE
Topography from aerial photographs by multiplex methods
Aerial photographs taken 1950. Field check 1953
Polyconic projection. 1927 North American datum
10,000-foot grid based on Kentucky coordinate system,
north zone



ROAD CLASSIFICATION

Heavy-duty	4 LANE 16 LANE	Light-duty	2 LANE 16 LANE
Medium-duty	4 LANE 16 LANE	Unimproved dirt	-----

U. S. Route State Route



SALT LICK, KY.
SE/4 SALT LICK 15' QUADRANGLE
N3800-W8330/7.5

THIS MAP COMPLIES WITH NATIONAL MAP ACCURACY STANDARDS
FOR SALE BY U.S. GEOLOGICAL SURVEY, WASHINGTON 25, D.C.
AND KENTUCKY AGRICULTURAL AND INDUSTRIAL DEVELOPMENT BOARD, FRANKFORT, KENTUCKY
A FOLDER DESCRIBING TOPOGRAPHIC MAPS AND SYMBOLS IS AVAILABLE ON REQUEST

1953
"UNIVERSITY OF WISCONSIN"
Department of Geography