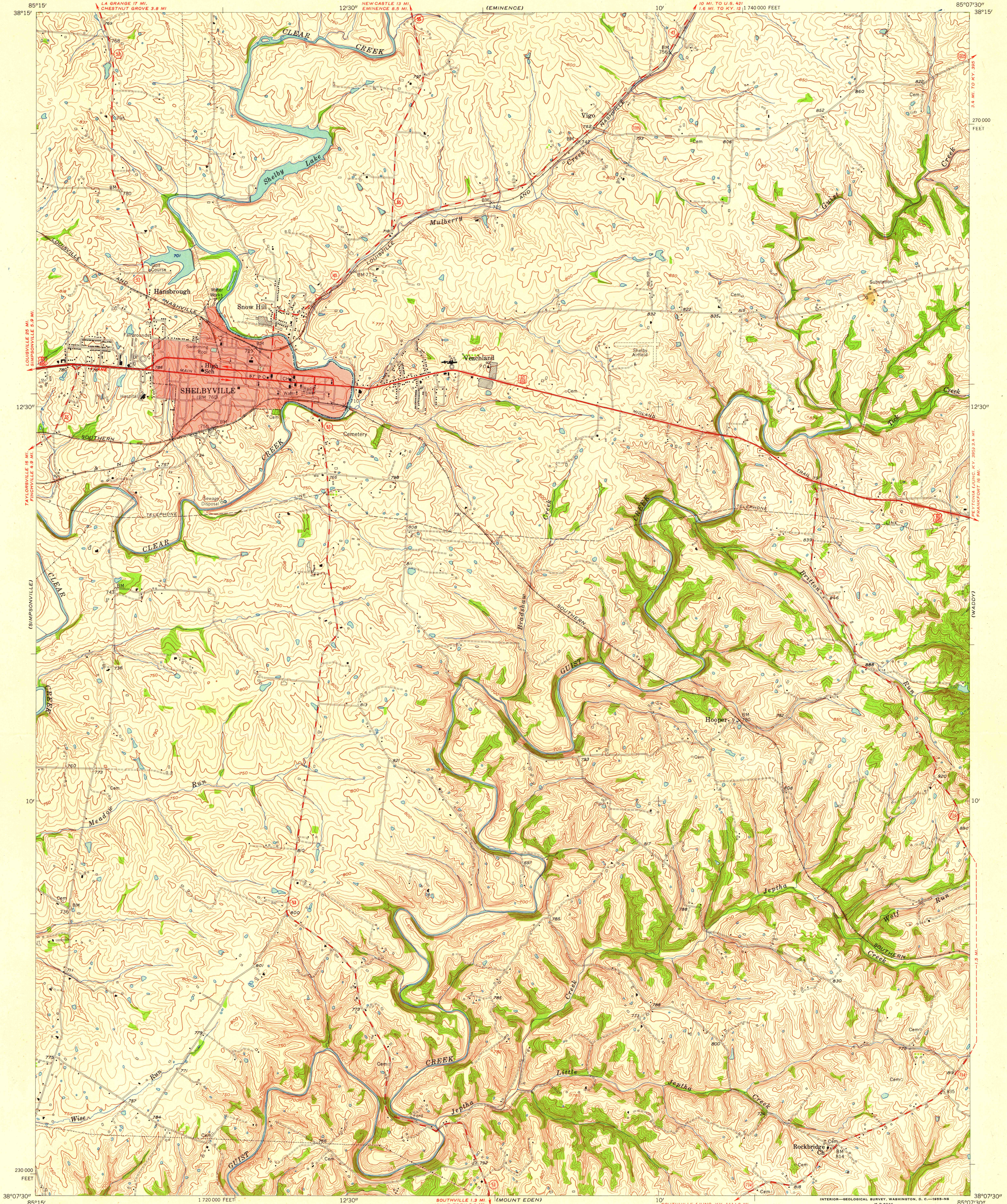


UNITED STATES  
DEPARTMENT OF THE INTERIOR  
GEOLOGICAL SURVEY

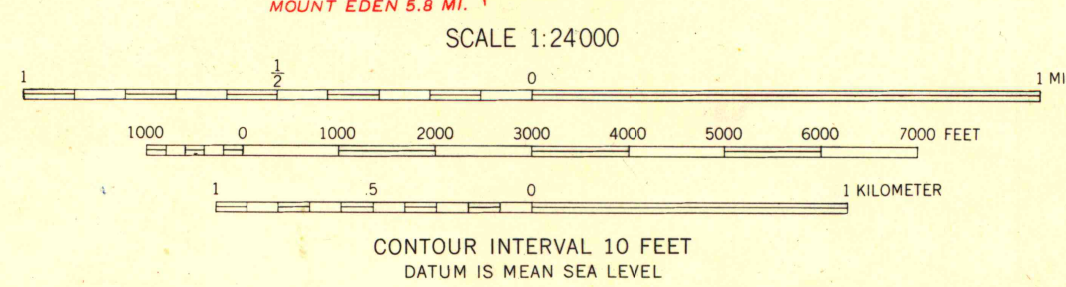
STATE OF KENTUCKY  
AGRICULTURAL AND INDUSTRIAL DEVELOPMENT BOARD

SHELBYVILLE QUADRANGLE  
KENTUCKY—SHELBY CO.  
7.5 MINUTE SERIES (TOPOGRAPHIC)  
NW/4 MOUNT EDEN 15' QUADRANGLE

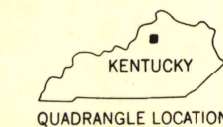


Mapped, edited, and published by the Geological Survey  
Control by USGS and USC&GS  
Topography from aerial photographs by stereophotogrammetric  
methods. Aerial photographs taken 1952. Field check 1954  
Polyconic projection. 1927 North American datum  
10,000-foot grid based on Kentucky coordinate system,  
north zone  
Red tint indicates area in which only  
landmark buildings are shown  
Unchecked elevations are shown in brown

APPROXIMATE MEAN  
DECLINATION, 1954



ROAD CLASSIFICATION  
Heavy-duty \_\_\_\_\_ Light-duty \_\_\_\_\_  
Medium-duty \_\_\_\_\_ Unimproved dirt \_\_\_\_\_  
U. S. Route \_\_\_\_\_ State Route \_\_\_\_\_



SHELBYVILLE, KY.  
NW/4 MOUNT EDEN 15' QUADRANGLE  
N3807.5—W8507.5/7.5

UNIVERSITY OF WISCONSIN  
Department of Geography

1954

THIS MAP COMPLIES WITH NATIONAL MAP ACCURACY STANDARDS  
FOR SALE BY U. S. GEOLOGICAL SURVEY, WASHINGTON 25, D. C.  
AND KENTUCKY AGRICULTURAL AND INDUSTRIAL DEVELOPMENT BOARD, FRANKFORT, KENTUCKY  
A FOLDER DESCRIBING TOPOGRAPHIC MAPS AND SYMBOLS IS AVAILABLE ON REQUEST