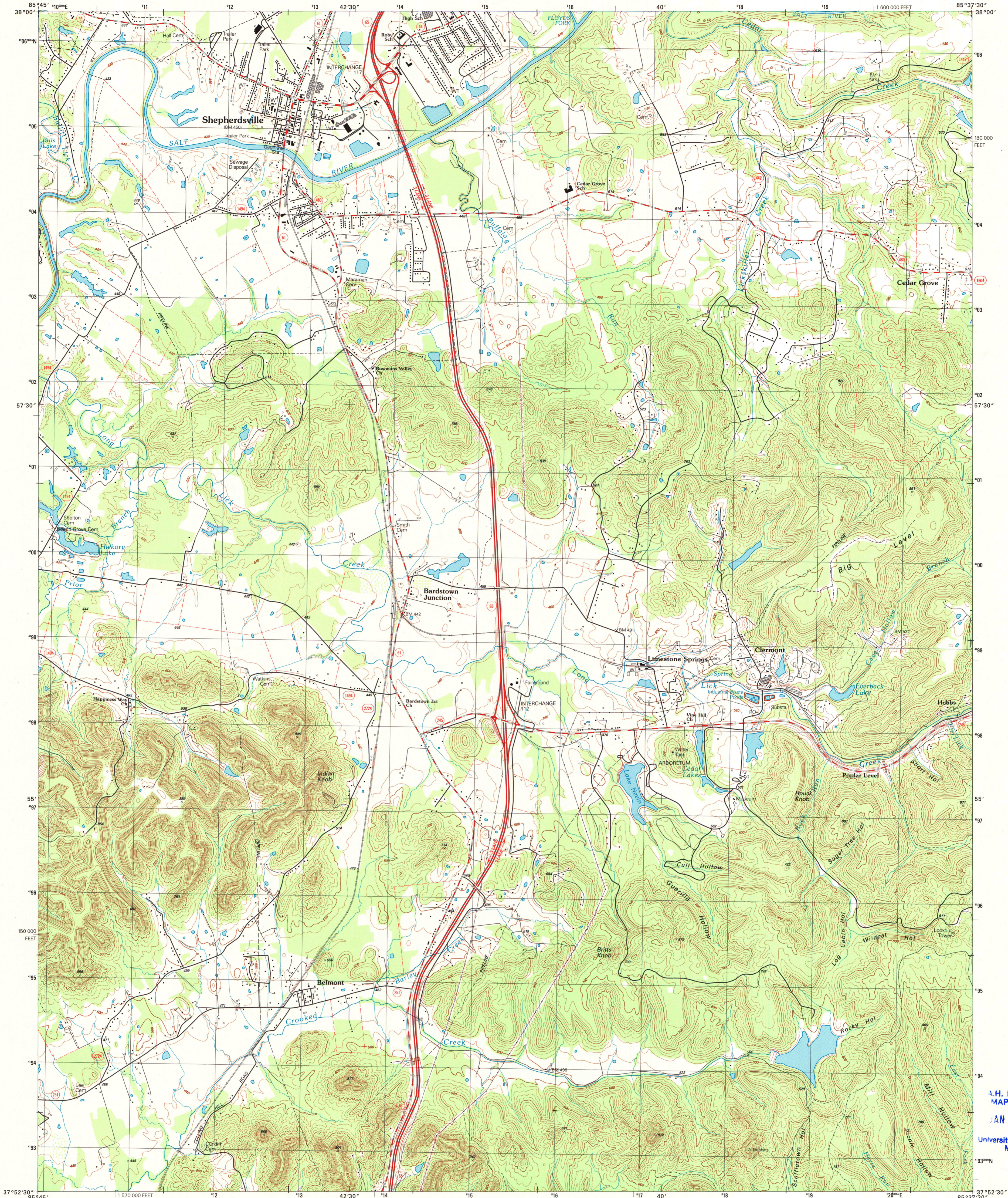


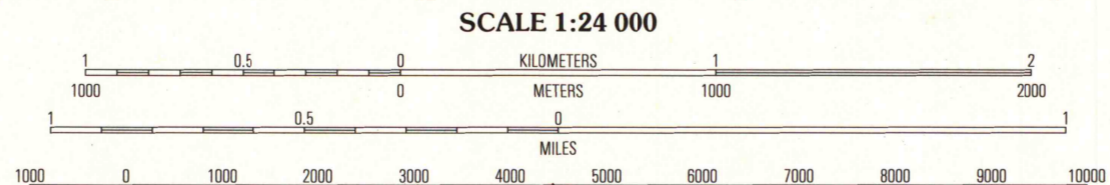
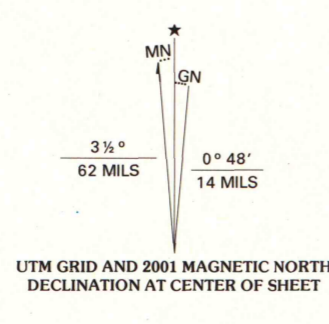


U.S. DEPARTMENT OF THE INTERIOR
U.S. GEOLOGICAL SURVEY

SHEPHERDSVILLE QUADRANGLE
KENTUCKY-BULLITT CO.
7.5-MINUTE SERIES (TOPOGRAPHIC)

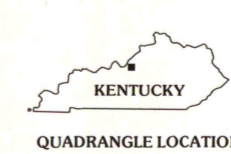


Produced by the United States Geological Survey
Derived from imagery taken 1987 and other sources. Photoinspected using imagery taken 1998; no major culture or drainage changes observed. Survey control current as of 1988
North American Datum of 1927 (NAD 27). Projection and 10 000-foot ticks: Kentucky coordinate system, north zone (Lambert conformal conic)
1000-meter Universal Transverse Mercator grid, zone 16
North American Datum of 1983 (NAD 83) is shown by dashed corner ticks. The values of the shift between NAD 27 and NAD 83 for 7.5-minute intersections are obtainable from National Geodetic Survey NADCON software



CONTOUR INTERVAL 20 FEET
NATIONAL GEODETIC VERTICAL DATUM OF 1929
TO CONVERT FROM FEET TO METERS, MULTIPLY BY 0.3048

THIS MAP COMPLIES WITH NATIONAL MAP ACCURACY STANDARDS
FOR SALE BY U.S. GEOLOGICAL SURVEY, P.O. BOX 25286, DENVER, COLORADO 80225
KENTUCKY GEOLOGICAL SURVEY, LEXINGTON, KENTUCKY 40506
AND KENTUCKY DEPARTMENT OF COMMERCE, FRANKFORT, KENTUCKY 40601
A FOLDER DESCRIBING TOPOGRAPHIC MAPS AND SYMBOLS IS AVAILABLE ON REQUEST



ROAD CLASSIFICATION
Primary highway, hard surface Light-duty road, hard or improved surface
Secondary highway, hard surface Unimproved road
Interstate Route U. S. Route State Route

1	2	3	1 Valley Station
4	5	6	2 Brooks
7	8	9	3 Mount Washington
10	11	12	4 Pitts Point
13	14	15	5 Samuels
16	17	18	6 Colablers
19	20	21	7 Lebanon Junction
22	23	24	8 Cravens

SHEPHERDSVILLE, KY
1998
NIMA 3851 NW-SERIES V853

A.H. ROBINSON
MAP LIBRARY
JAN 09 2002
University of Wisconsin
Madison

