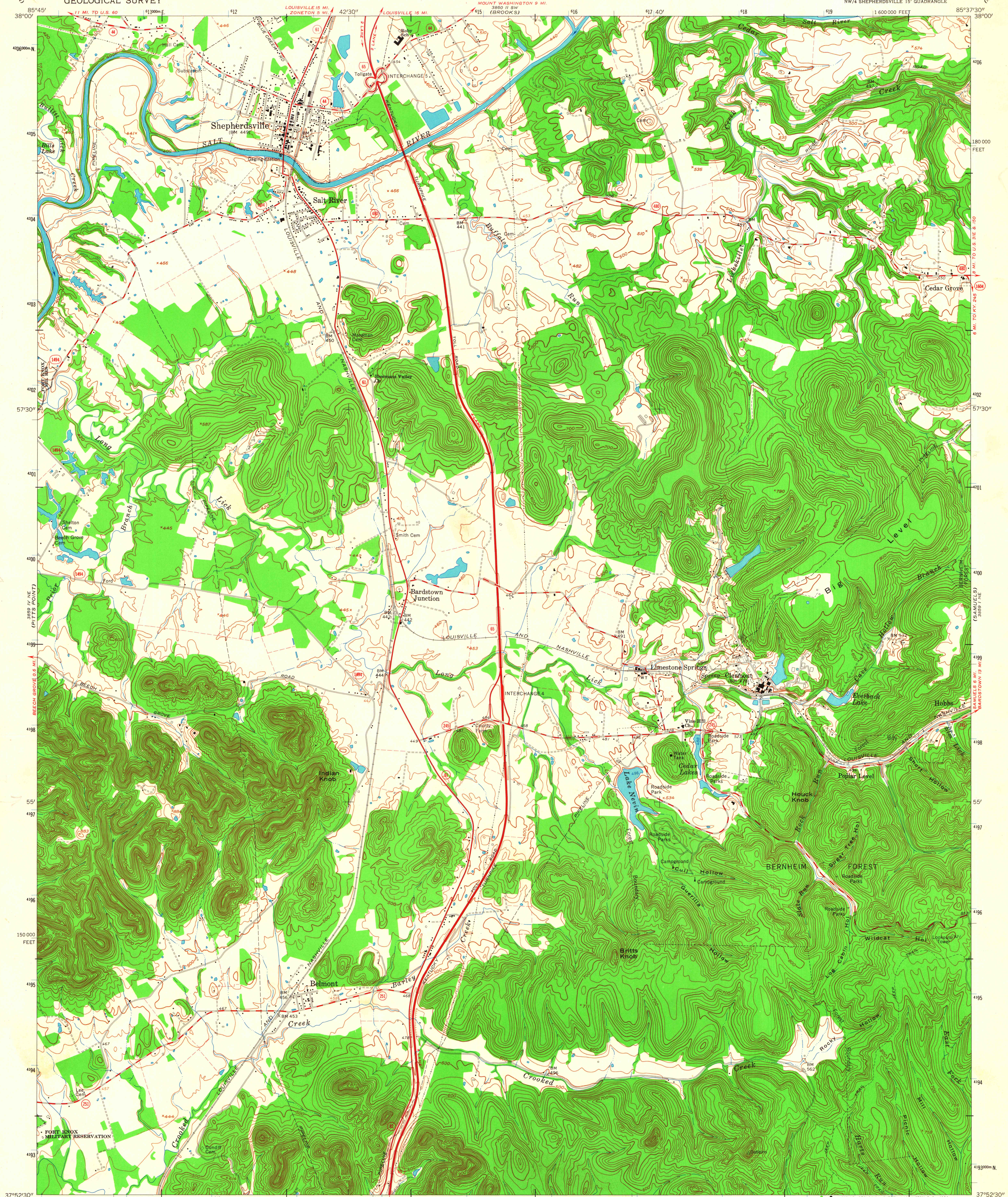


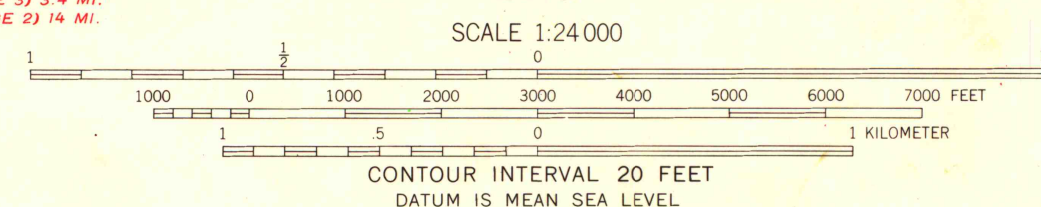
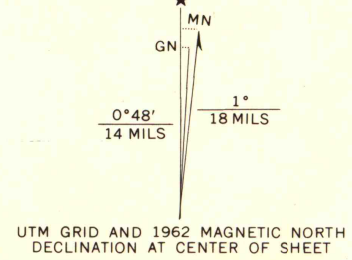
UNITED STATES  
DEPARTMENT OF THE INTERIOR  
GEOLOGICAL SURVEY

SHEPHERDSVILLE QUADRANGLE  
KENTUCKY—BULLITT CO.  
7.5 MINUTE SERIES (TOPOGRAPHIC)  
NW/4 SHEPHERDSVILLE 15' QUADRANGLE



Mapped by the Army Map Service  
Edited and published by the Geological Survey  
Revised by the Geological Survey in cooperation  
with Kentucky Geological Survey

Control by USGS and USC&GS  
Topography by photogrammetric methods from aerial  
photographs taken 1947. Field checked 1949. Revised 1962  
Polyconic projection. 1927 North American datum  
10,000-foot grid based on Kentucky coordinate system, north zone  
1000-meter Universal Transverse Mercator grid ticks,  
zone 16, shown in blue  
Fine red dashed lines indicate selected fence and field lines where  
generally visible on aerial photographs. This information is unchecked



THIS MAP COMPLIES WITH NATIONAL MAP ACCURACY STANDARDS  
FOR SALE BY U. S. GEOLOGICAL SURVEY, WASHINGTON 25, D. C.,  
AND KENTUCKY DEPARTMENT OF COMMERCE, FRANKFORT, KENTUCKY  
A FOLDER DESCRIBING TOPOGRAPHIC MAPS AND SYMBOLS IS AVAILABLE ON REQUEST



ROAD CLASSIFICATION  
Heavy-duty ——— Light-duty ———  
Medium-duty ——— Unimproved dirt ———  
Interstate Route ——— State Route ———

SHEPHERDSVILLE, KY.  
NW/4 SHEPHERDSVILLE 15' QUADRANGLE  
N3752.5—W8537.5/7.5

1962

AMS 3859 1 NW—SERIES V853

MAP AND AIR PHOTO LIBRARY  
University of Wisconsin