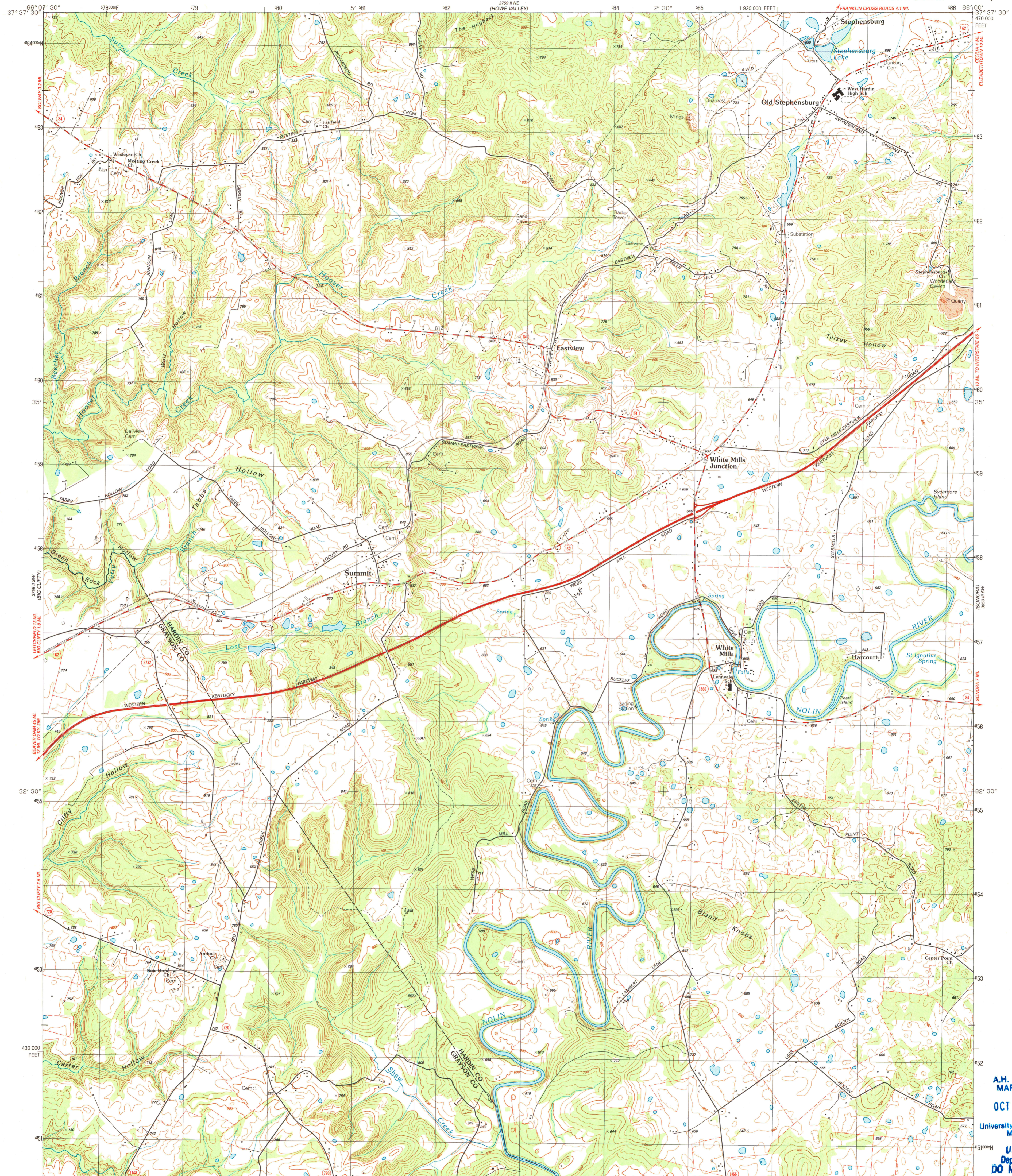
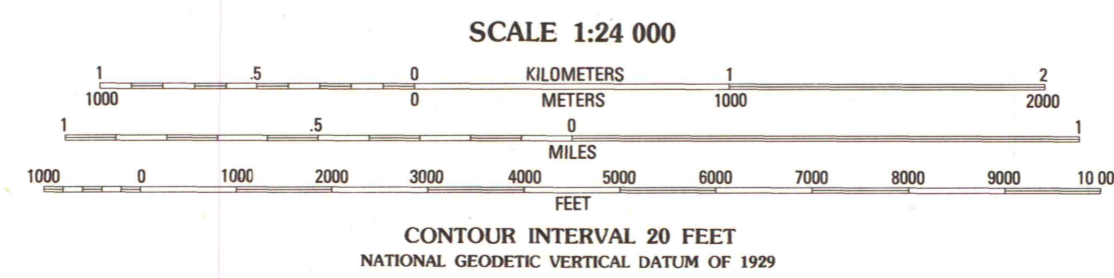
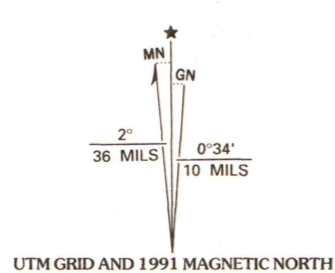


UNITED STATES  
DEPARTMENT OF THE INTERIOR  
GEOLOGICAL SURVEY

SUMMIT QUADRANGLE  
KENTUCKY  
7.5 MINUTE SERIES (TOPOGRAPHIC)  
SE 1/4 BIG CLIFFY 15' QUADRANGLE



Produced by the United States Geological Survey  
Control by USGS and NOS/NOAA  
Compiled from aerial photographs taken 1988  
Field checked 1989. Map edited 1991  
Projection and 10,000-foot grid ticks: Kentucky coordinate system, south zone (Lambert conformal conic)  
1000-meter Universal Transverse Mercator grid, zone 16  
1927 North American Datum  
The difference between 1927 North American Datum and North American Datum of 1983 (NAD 83) for 7.5-minute intersections is given in USGS Bulletin 1875. The NAD 83 is shown by dashed corner ticks  
Fine red dashed lines indicate selected fence and field lines where generally visible on aerial photographs. This information is unchecked



ROAD CLASSIFICATION

Primary highway, hard surface	Light-duty road, hard or improved surface
Secondary highway, hard surface	Unimproved road
Interstate Route	U. S. Route
	State Route

SUMMIT, KY.  
SE 1/4 BIG CLIFFY 15' QUADRANGLE  
37086-E1-TF-024

1991

DMA 3759 II SE-SERIES V853

A.H. ROBINSON  
MAP LIBRARY  
OCT 19 1992  
University of Wisconsin  
Madison  
U.S. Regional  
Depository Copy  
DO NOT DISCARD