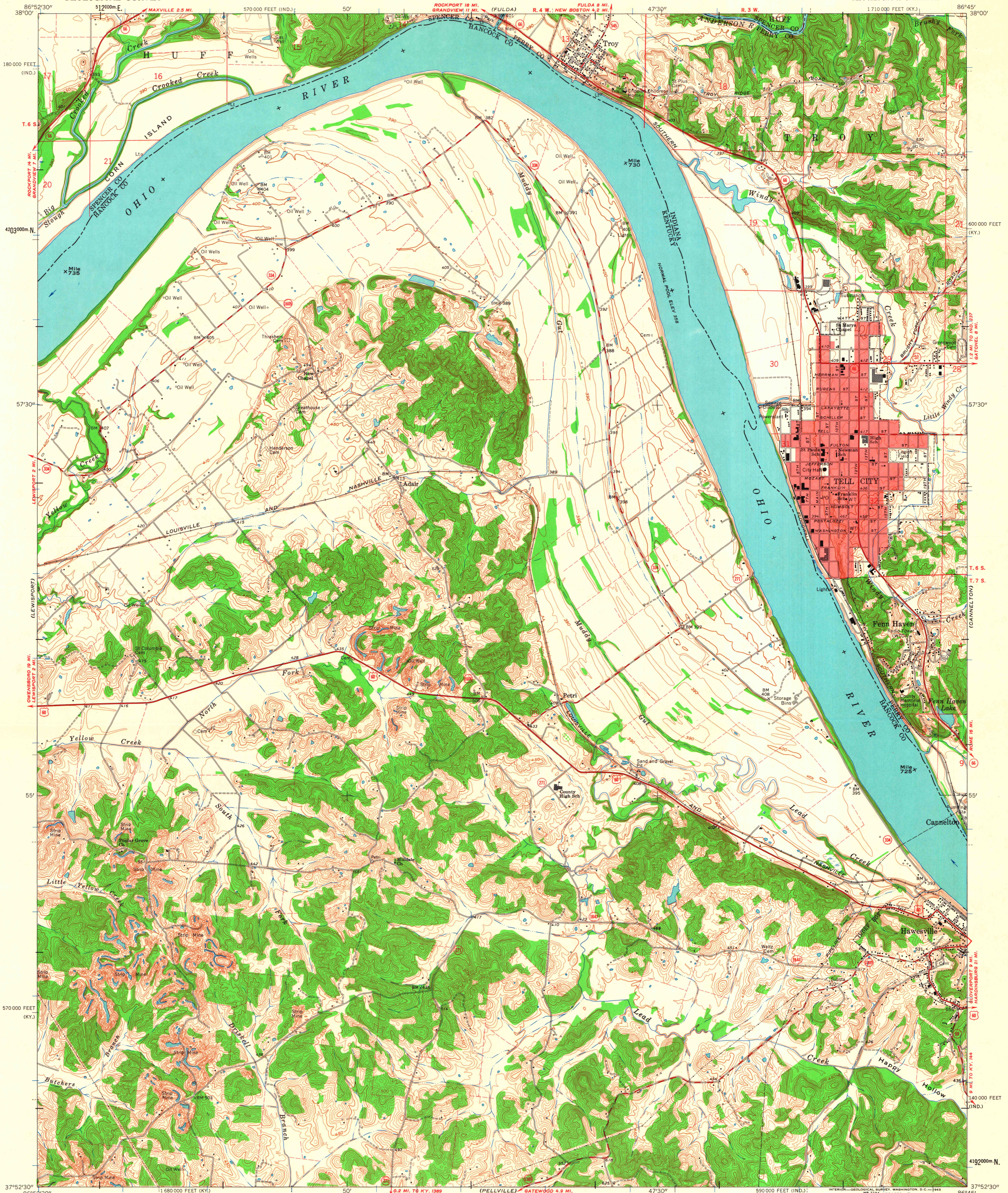
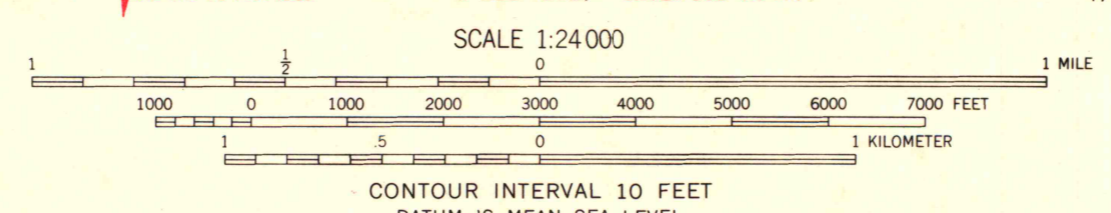


UNITED STATES  
DEPARTMENT OF THE INTERIOR  
GEOLOGICAL SURVEY

TELL CITY QUADRANGLE  
KENTUCKY-INDIANA  
7.5 MINUTE SERIES (TOPOGRAPHIC)  
NE 1/4 TELL CITY 15' QUADRANGLE



Mapped, edited, and published by the Geological Survey in cooperation with State of Kentucky Geological Survey and State of Indiana Department of Conservation Control by USGS, US&GS, and USCE. Topography in Kentucky by photogrammetric methods from aerial photographs taken 1951. Field checked 1953. Revised 1961. Topography in Indiana by photogrammetric methods from aerial photographs taken 1958. Field checked 1961. Polyconic projection. 1927 North American datum. 10,000-foot grids based on Kentucky coordinate system, south zone and Indiana coordinate system, west zone. 1000-meter Universal Transverse Mercator grid ticks, zone 16, shown in blue. Fine red dashed lines indicate selected fence and field lines where generally visible on aerial photographs. This information is unchecked. The state boundary as shown represents the approximate position of the low water line as determined from U. S. Corps of Engineers Ohio River Charts, surveyed 1912, and supplementary information. Red tint indicates area in which only landmark buildings are shown.



ROAD CLASSIFICATION

Heavy-duty	Light-duty
Medium-duty	Unimproved dirt
U. S. Route	State Route

THIS MAP COMPLIES WITH NATIONAL MAP ACCURACY STANDARDS FOR SALE BY U. S. GEOLOGICAL SURVEY, WASHINGTON 25, D. C., KENTUCKY GEOLOGICAL SURVEY, LEXINGTON, KENTUCKY, AND KENTUCKY DEPARTMENT OF COMMERCE, FRANKFORT, KENTUCKY AND INDIANA DEPARTMENT OF CONSERVATION, INDIANAPOLIS, INDIANA. A FOLDER DESCRIBING TOPOGRAPHIC MAPS AND SYMBOLS IS AVAILABLE ON REQUEST.



TELL CITY, KY.-IND.  
NE 1/4 TELL CITY 15' QUADRANGLE  
N 3752.5-W 8645.7.5  
1961