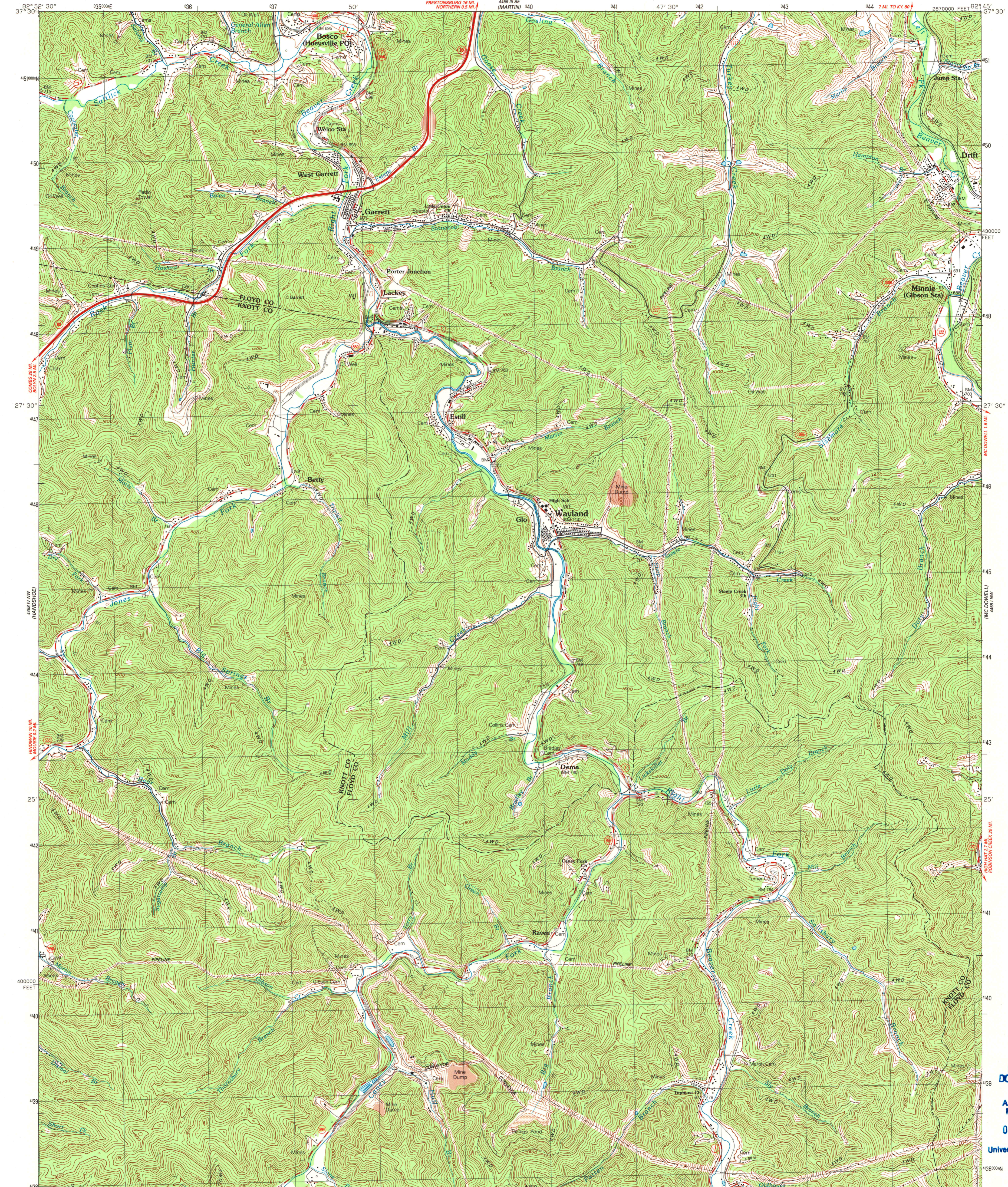


UNITED STATES
DEPARTMENT OF THE INTERIOR
GEOLOGICAL SURVEY

WAYLAND QUADRANGLE
KENTUCKY
7.5 MINUTE SERIES (TOPOGRAPHIC)
NE 4 HINDMAN 15 QUADRANGLE

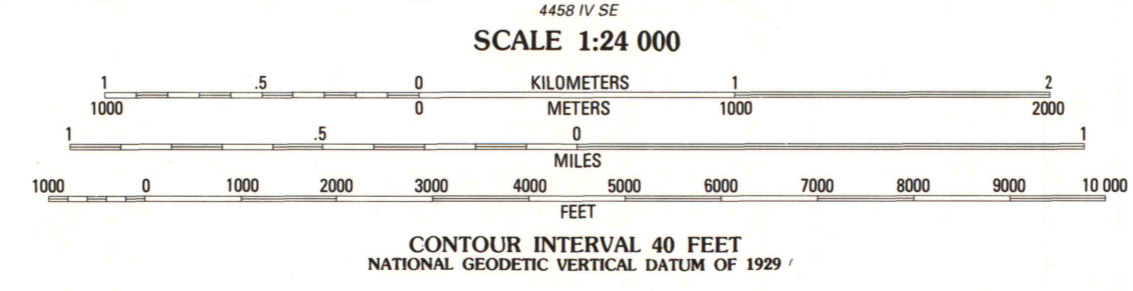
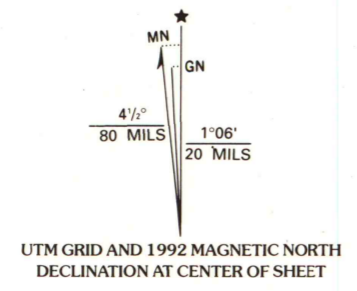


Produced by the United States Geological Survey in cooperation with Kentucky Geological Survey Control by USGS and NOS/NOAA Topography from coal company maps stereocompiled in 1947 Field checked 1954. Revised from aerial photographs taken 1988 Field checked 1990. Map edited 1992

Projection and 10,000-foot grid ticks: Kentucky coordinate system, south zone (Lambert conformal conic) 1000-meter Universal Transverse Mercator grid, zone 17 1927 North American Datum The difference between 1927 North American Datum and North American Datum of 1983 (NAD 83) for 7.5-minute intersections is given in USGS Bulletin 1875. The NAD 83 is shown by dashed corner ticks

Unlabeled wells are gas wells

Contours in intricate surface areas are generalized



CONTOUR INTERVAL 40 FEET
NATIONAL GEODETIC VERTICAL DATUM OF 1929

COMPLIES WITH U.S. GEOLOGICAL SURVEY STANDARDS FOR SPATIAL ACCURACY - CLASS 3 FOR SALE BY U.S. GEOLOGICAL SURVEY, DENVER, COLORADO 80225, OR RESTON, VIRGINIA 22092 KENTUCKY GEOLOGICAL SURVEY, LEXINGTON, KENTUCKY 40506 AND KENTUCKY DEPARTMENT OF COMMERCE, FRANKFORT, KENTUCKY 40601 A FOLDER DESCRIBING TOPOGRAPHIC MAPS AND SYMBOLS IS AVAILABLE ON REQUEST



ROAD CLASSIFICATION

Primary highway, hard surface	Light-duty road, hard or improved surface
Secondary highway, hard surface	Unimproved road
Interstate Route	U. S. Route
	State Route

WAYLAND, KY
NE 4 HINDMAN 15 QUADRANGLE
37082-D7-TF-024
1992
DMA 4458 IV NE-SERIES W853

U.S. Regional
Depository Copy
DO NOT DISCARD
A.H. ROBINSON
MAP LIBRARY
OCT 19 1992
University of Wisconsin
Madison