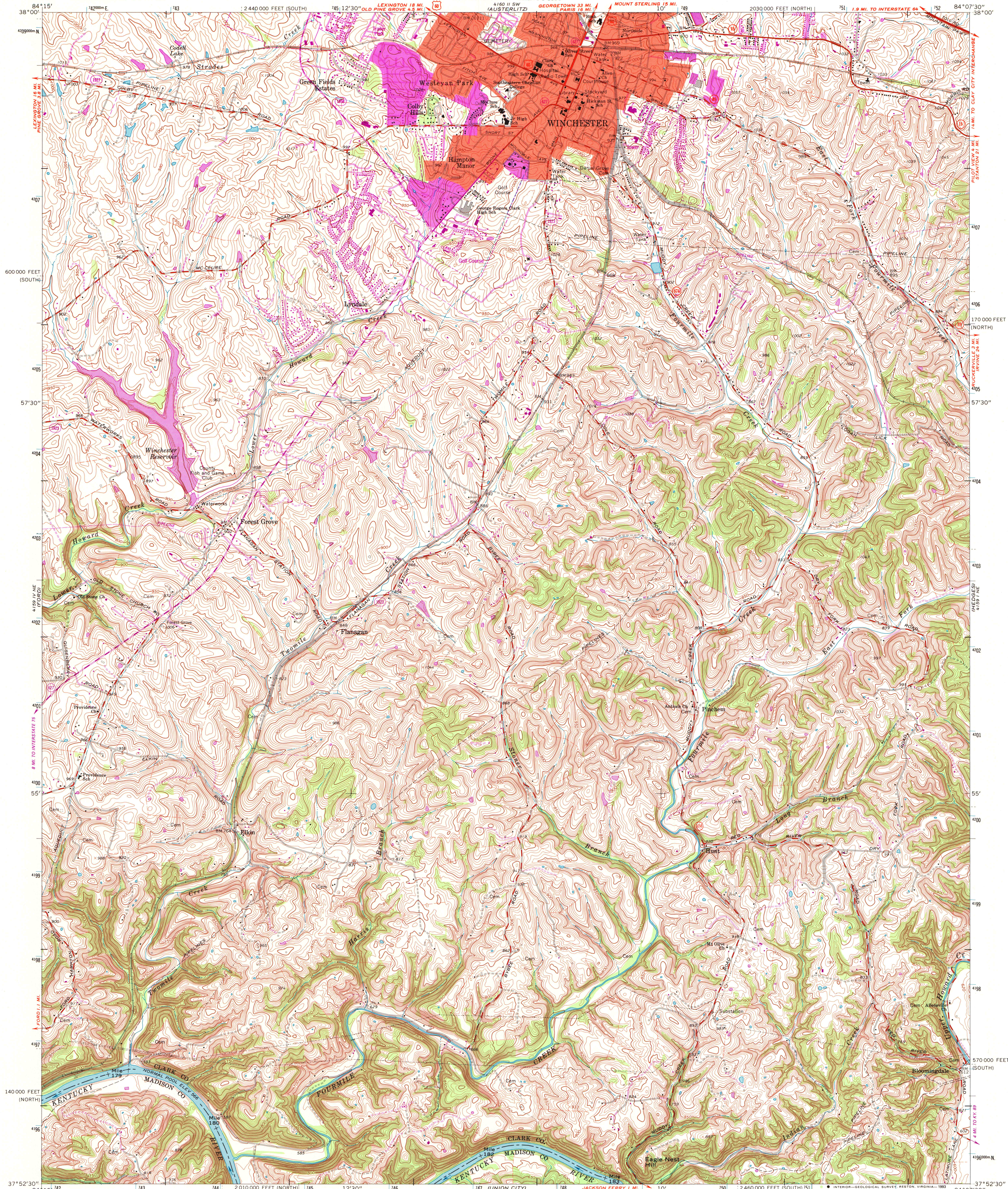


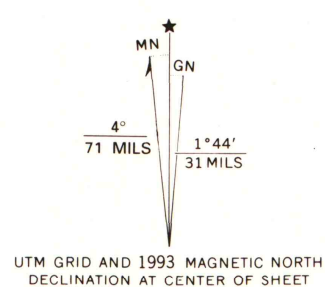
UNITED STATES
DEPARTMENT OF THE INTERIOR
GEOLOGICAL SURVEY

STATE OF KENTUCKY
KENTUCKY GEOLOGICAL SURVEY
UNIVERSITY OF KENTUCKY

WINCHESTER QUADRANGLE
KENTUCKY
7.5 MINUTE SERIES (TOPOGRAPHIC)
NW/4 WINCHESTER 15' QUADRANGLE



Produced by the United States Geological Survey
Control by USGS, NOS/NOAA and Kentucky Geodetic Survey
Topography by photogrammetric methods from aerial photographs
taken 1950. Field checked 1952. Revised 1955
Projection: Kentucky coordinate system, north zone
(Lambert conformal conic)
10,000-foot grid ticks: Kentucky coordinate
system, north and south zones
1000-meter Universal Transverse Mercator grid ticks, zone 16, shown in blue
1927 North American Datum (NAD 27)
North American Datum of 1983 (NAD 83) is shown by dashed corner ticks
The values of the shift between NAD 27 and NAD 83 for 7.5-minute
intersections are given in USGS Bulletin 1875
Red tint indicates area in which only landmark buildings are shown



SCALE 1:24,000
1000 0 1000 2000 3000 4000 5000 6000 7000 FEET
0 1 KILOMETER
CONTOUR INTERVAL 10 FEET
NATIONAL GEODETIC VERTICAL DATUM OF 1929

THIS MAP COMPLIES WITH NATIONAL MAP ACCURACY STANDARDS
FOR SALE BY U.S. GEOLOGICAL SURVEY, DENVER, COLORADO 80225, OR RESTON, VIRGINIA 22092
KENTUCKY GEOLOGICAL SURVEY, LEXINGTON, KENTUCKY 40506
AND KENTUCKY DEPARTMENT OF COMMERCE, FRANKFORT, KENTUCKY 40601
A FOLDER DESCRIBING TOPOGRAPHIC MAPS AND SYMBOLS IS AVAILABLE ON REQUEST

ARTHUR H. ROBINSON MAP LIBRARY
University of Wisconsin-Madison

OCT 06 1993



ROAD CLASSIFICATION
Heavy-duty ——— Light-duty ———
Medium-duty ——— Unimproved dirt ———
U. S. Route ——— State Route ———

WINCHESTER, KY.
NW/4 WINCHESTER 15' QUADRANGLE
37084-H2-TF-024

1965
REVISED 1993
DMA 4159 1 NW—SERIES V853

Revisions shown in purple and woodland compiled in cooperation with
State of Kentucky agencies from aerial photographs taken 1988
and other sources. Contours not revised. This information
not field checked. Map edited 1993
Purple tint indicates extension of urban areas