

(Monticello)

DEPARTMENT OF THE INTERIOR
U. S. GEOLOGICAL SURVEY

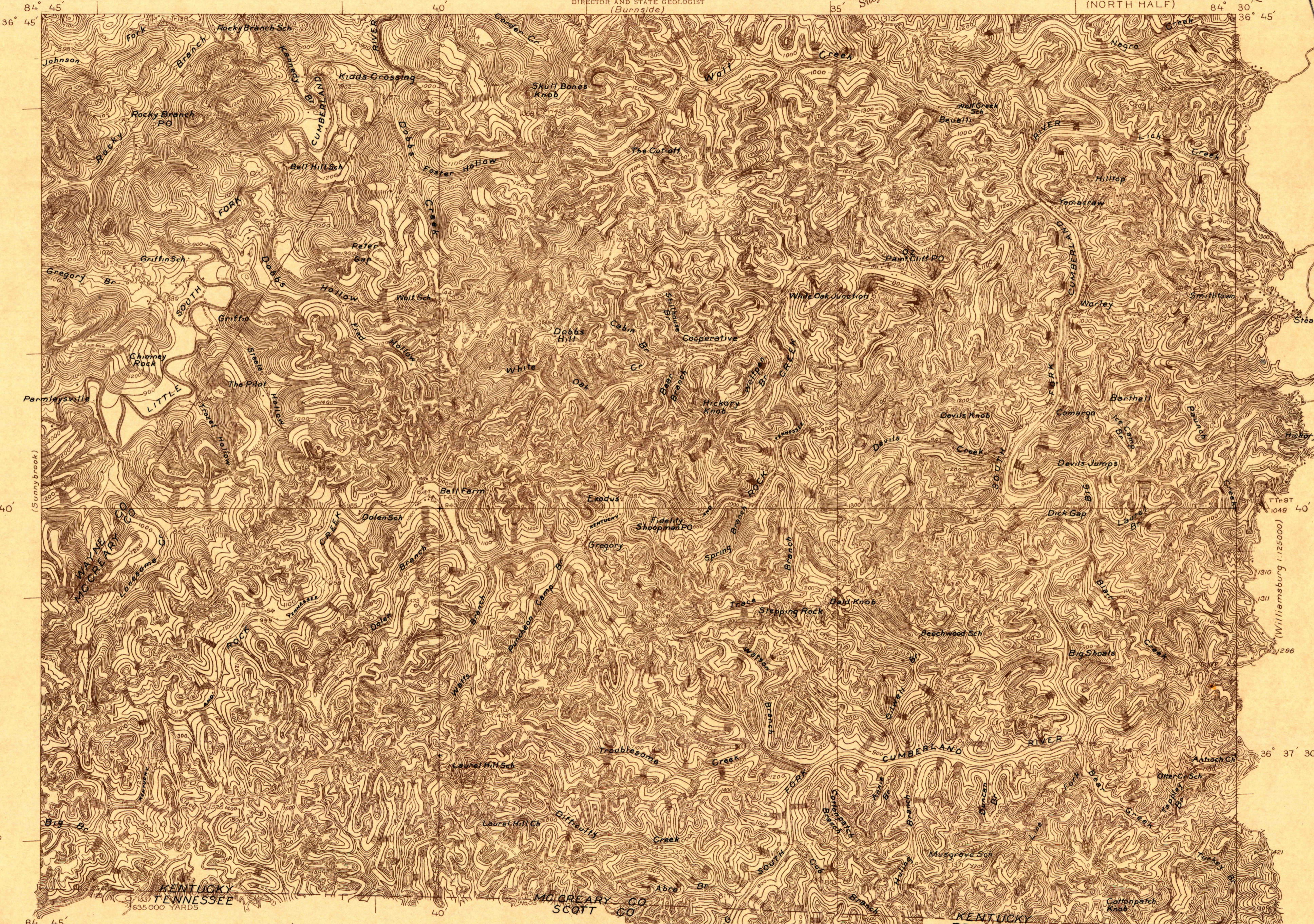
736-N-III-E/2
STATE OF KENTUCKY
KENTUCKY GEOLOGICAL SURVEY
WILLARD ROUSE JILLSON
DIRECTOR AND STATE GEOLOGIST
(Burnside)

Advance sheet
Subject to correction

KENTUCKY - TENNESSEE
BARTHELL QUADRANGLE
(NORTH HALF)

(Williamsburg)
735 000

U.S.G.S.
FILE COPY
Inspection and Release



USGS
Historical File
Topographic Division

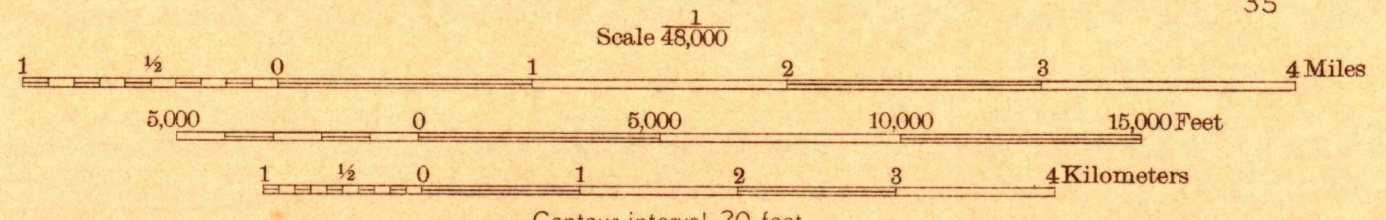
36° 37' 30"

1:635,000
YARDS

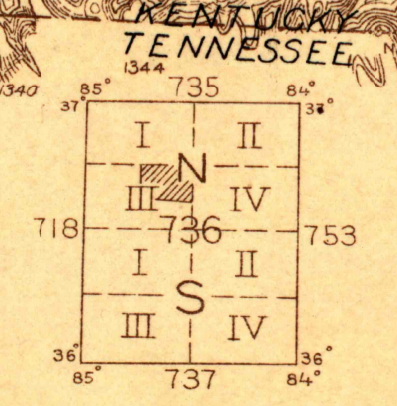
36° 37' 30"

Albert Pike, Division Engineer
Topography by R. C. Seitz
Control by U. S. Geological Survey
Surveyed in 1928

TRUE NORTH
MAGNETIC NORTH
APPROXIMATE MEAN
DECLINATION, 1928



Contour interval 20 feet
Datum is mean sea level



Polygonic projection. North American datum
5000 yard grid based upon U. S. zone system, B

USGS
Historical File
Topographic Division

BARTHELL, KY-TENN.

KY.

(Williamsburg)
735 000

U.S.G.S.
FILE COPY
Inspection and Release