

This sheet must not be taken from the files without an order from the Chief Topographic Engineer.

TOPOGRAPHIC FILES

88° 15'  
37° 15'

DEPARTMENT OF THE INTERIOR  
U. S. GEOLOGICAL SURVEY

666-S-IV-E/2  
STATE OF KENTUCKY  
KENTUCKY GEOLOGICAL SURVEY  
WILLARD ROUSE JILLSON  
DIRECTOR AND STATE GEOLOGIST  
(Cave in Rock)

Advance sheet  
Subject to correction

KENTUCKY  
EDDYVILLE QUADRANGLE

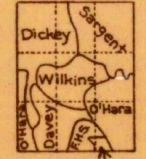
88° 00'  
37° 15'



1580 000  
YARDS

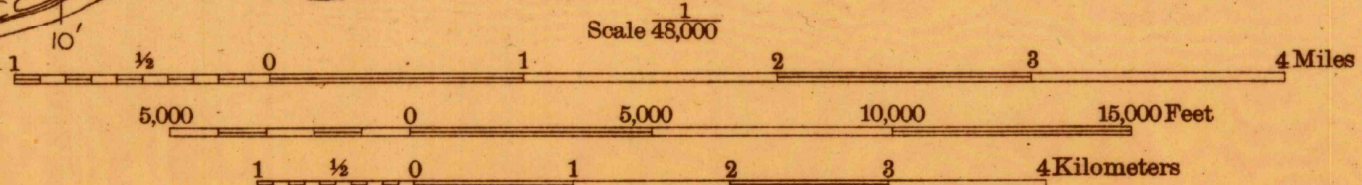
88° 15'  
37° 00'

1075 000  
YARDS  
Glenn S. Smith, Division Engineer  
Topography by CH. Davey, Crawford Dickey,  
FH Sargent, SB O'Hara, and Leslie Wilkins  
Control by U. S. Geological Survey and  
U. S. Coast and Geodetic Survey  
Surveyed in 1928

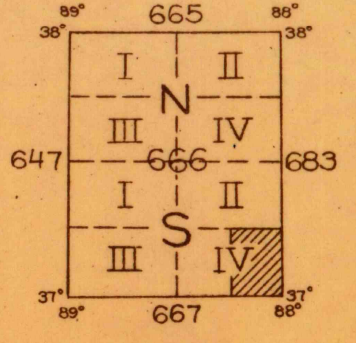


TRUE NORTH  
MAGNETIC NORTH

APPROXIMATE MEAN  
DECLINATION, 1928



Scale 48,000  
Contour interval 20 feet  
Datum is mean sea level



Polygonic projection. North American datum  
5000 yard grid based upon U. S. zone system, C  
To join Cave in Rock and Princeton maps,  
use dotted projection corners

EDDYVILLE, KY.

U. S. STORAGE FILES  
(DO NOT REMOVE)