

FILE COPY
DEPARTMENT OF THE INTERIOR
U. S. GEOLOGICAL SURVEY

751-5-IV-W/2
STATE OF KENTUCKY
KENTUCKY GEOLOGICAL SURVEY
WILLARD ROUSE HILLSON
DIRECTOR AND STATE GEOLOGIST

Advance sheet
Subject to correction

KENTUCKY
MOREHEAD QUADRANGLE

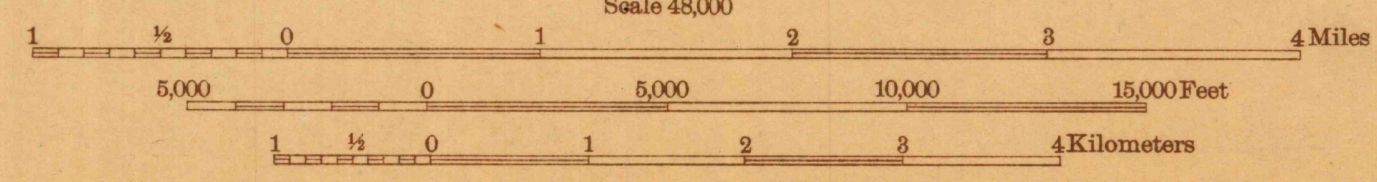


15 Miles
14
13
12
11
10
9
8
7
6
5
4
3
2
1
0
1
2
3
4
5
6
7
8
9
10
11
12
13
14
15 Miles

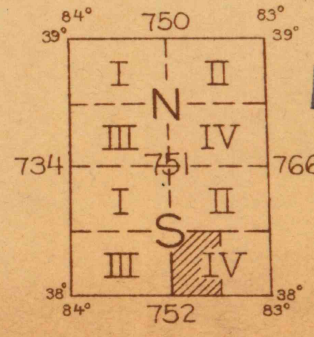
Albert Pike, Division Engineer
Topography by J.M. Rawls, R.F. Wilcoxon, G.E. Sisson,
H.R. Kilmer, W.C. Thompson, B.P. Taylor, J.P. Rydeen,
R.F. Hamke, G.A. Mock, G.W. Fisher, and J.H. Lycett
Control by U. S. Geological Survey
Surveyed in 1928-1929



APPROXIMATE MEAN
DECLINATION, 1929



Contour interval 20 feet
Datum is mean sea level



Polyconic projection. North American datum
5000 yard grid based upon U. S. zone system, B
FILE COPY
RETURN TO CENTRAL FILE
DO NOT REMOVE
Morehead, Ky.