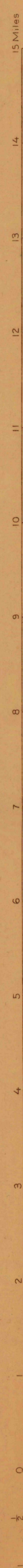


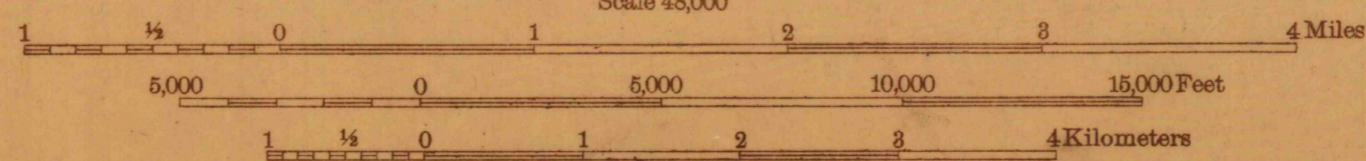
Advance sheet  
Subject to correction



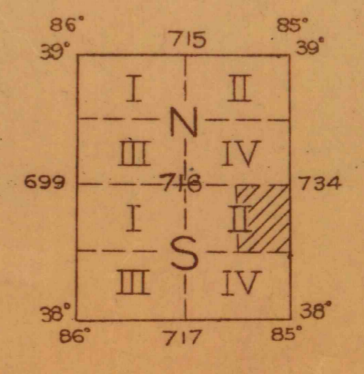
(Taylorsville)  
1:35,000 YARDS  
Albert Pike, Division Engineer  
Topography by R.L. Harrison, R.H. Reineck,  
R.H. Runyan, L.E. Tull, and R.E. Amidon  
Control by U. S. Geological Survey  
Surveyed in 1928



APPROXIMATE MEAN  
DECLINATION, 1928



Contour interval 20 feet  
Datum is mean sea level



Polyconic projection, North American datum  
5000 yard grid based upon 11 S. system, C  
**FILE COPY**  
RETURN TO CENTRAL FILE  
**1ST. CAL FILES**  
(DO NOT REMOVE)