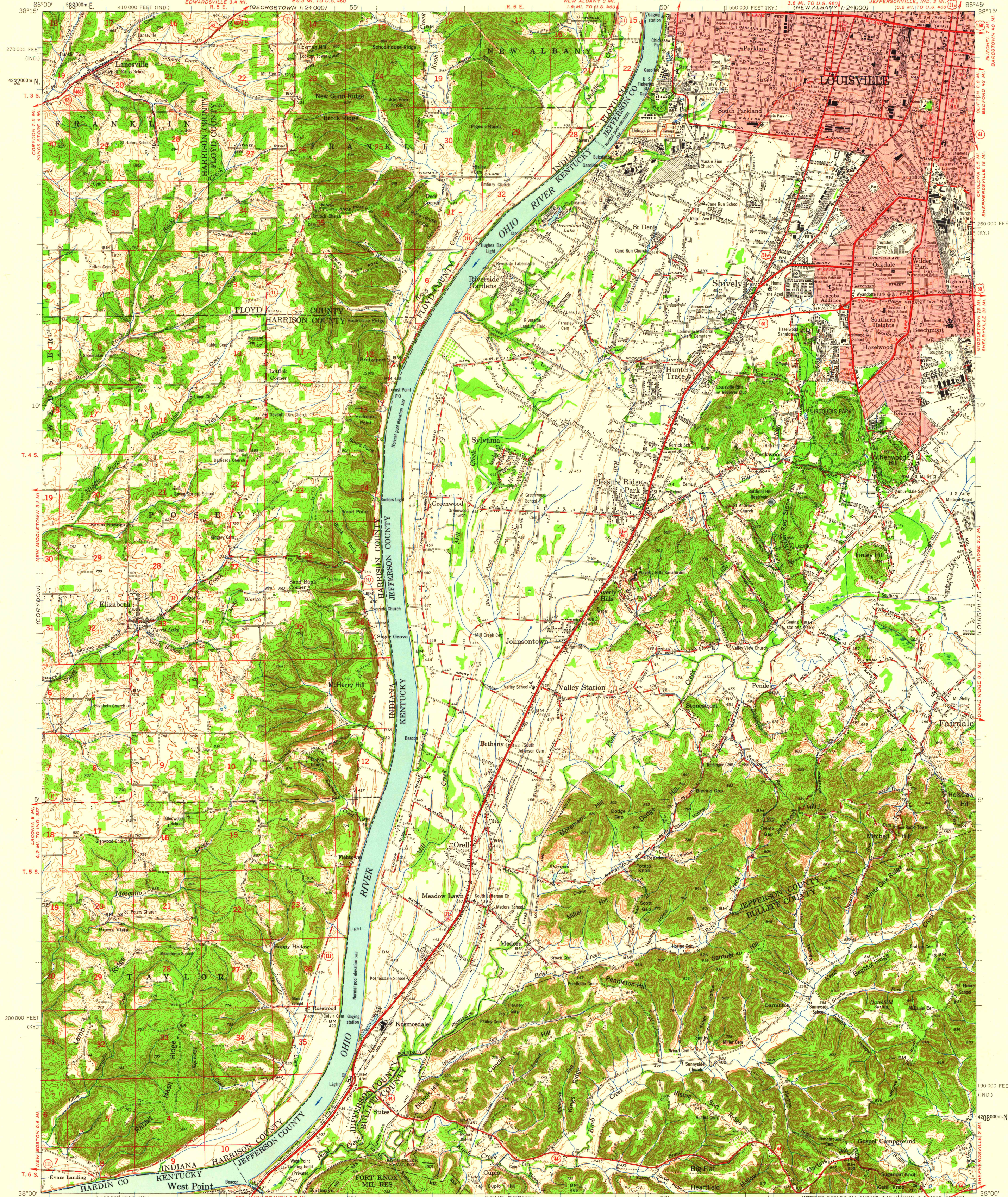


UNITED STATES
DEPARTMENT OF THE INTERIOR
GEOLOGICAL SURVEY

UNITED STATES
DEPARTMENT OF THE ARMY
CORPS OF ENGINEERS

KOSMOSDALE QUADRANGLE
KENTUCKY-INDIANA
15 MINUTE SERIES (TOPOGRAPHIC)



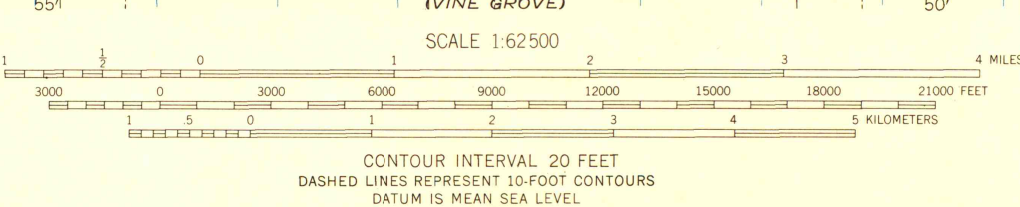
Maped by the Geological Survey and the Army Map Service
Published for civil use by the Geological Survey

Control by USGS, USC&GS, USCE, and the City of Louisville
Compiled in 1953 from 1:25 000 scale maps of Louisville West,
Lanesville, Kosmosdale, and Valley Station 7.5 minute
quadrangles, surveyed in 1950. Topography from aerial
photographs by photogrammetric methods. Aerial photographs
taken 1947 and 1949. Field check 1950.

Polyconic projection. 1927 North American datum
10,000-foot grids based on Kentucky coordinate system,
north zone, and Indiana coordinate system, east zone
1000-meter Universal Transverse Mercator grid ticks,
zone 16, shown in blue.

Red tint indicates area in which only
landmark buildings are shown.

TRUE NORTH
MAGNETIC NORTH
APPROXIMATE MEAN
DECLINATION, 1950



THIS MAP COMPLIES WITH NATIONAL MAP ACCURACY STANDARDS
FOR SALE BY U. S. GEOLOGICAL SURVEY, WASHINGTON 25, D. C.,
INDIANA DEPARTMENT OF CONSERVATION, INDIANAPOLIS, INDIANA,
AND KENTUCKY DEPARTMENT OF ECONOMIC DEVELOPMENT, FRANKFORT, KENTUCKY
A FOLDER DESCRIBING TOPOGRAPHIC MAPS AND SYMBOLS IS AVAILABLE ON REQUEST

ARTHUR H. ROBINSON MAP LIBRARY
University of Wisconsin-Madison

ROAD CLASSIFICATION
Heavy-duty ——— Light-duty ———
Medium-duty ——— Unimproved dirt ———
U. S. Route ——— State Route ———

This area also covered by 1:24 000 scale maps of
Louisville West, Lanesville, Kosmosdale, and
Valley Station 7.5 minute quadrangles, surveyed 1955

KOSMOSDALE, KY.-IND.
N 3800-W 8545/15

1950