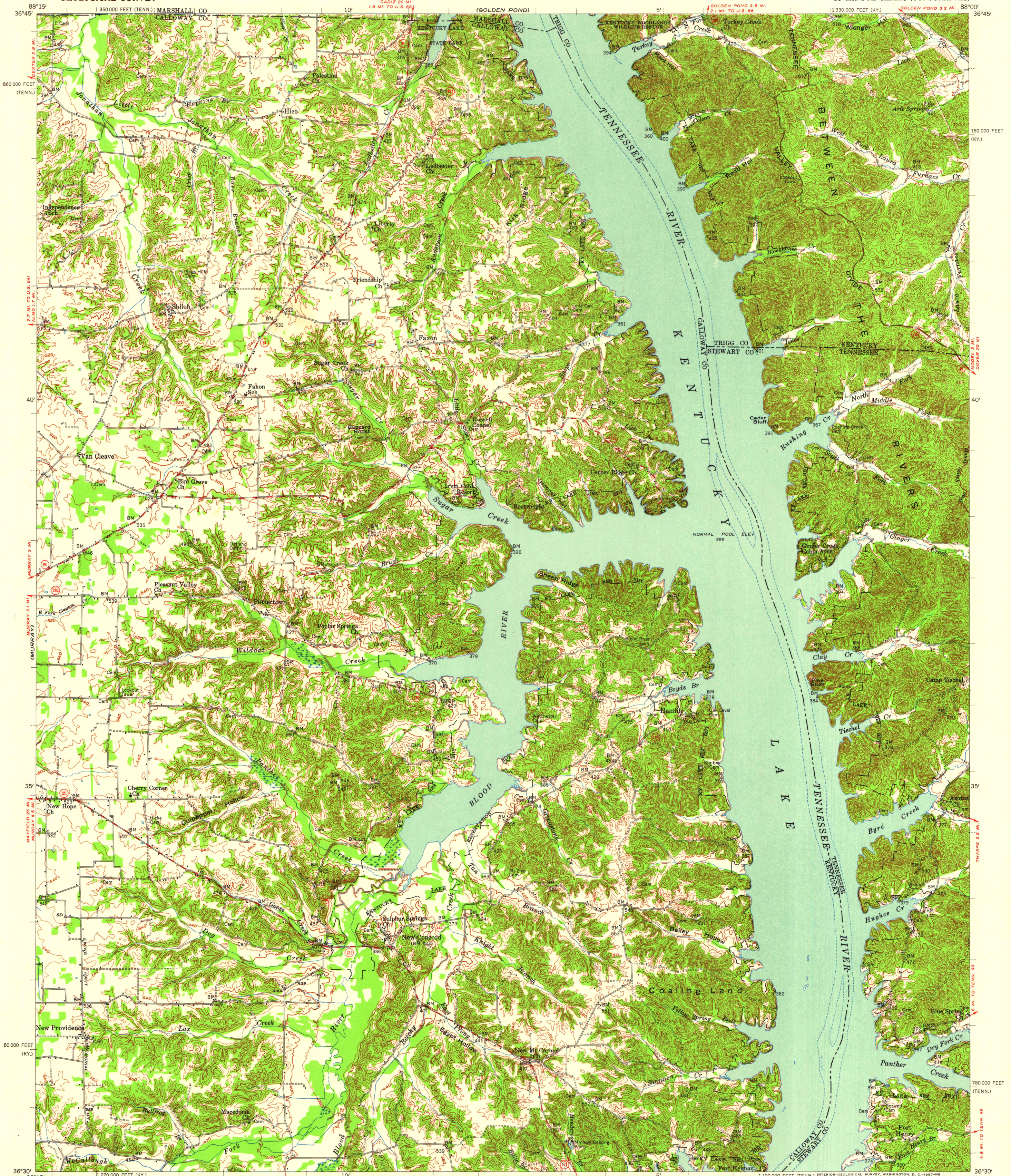


(BENTON)

UNITED STATES  
DEPARTMENT OF THE INTERIOR  
GEOLOGICAL SURVEY

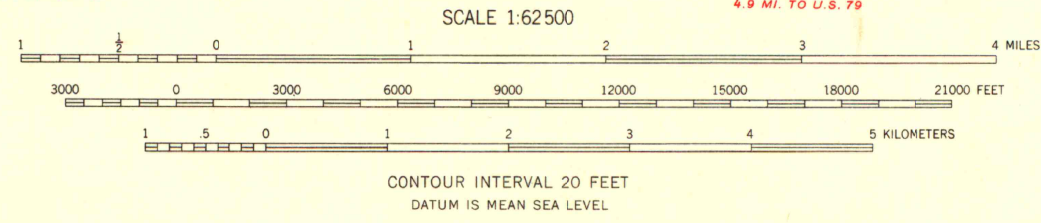
STATE OF KENTUCKY  
DEPARTMENT OF ECONOMIC DEVELOPMENT

NEW CONCORD QUADRANGLE  
KENTUCKY-TENNESSEE  
15 MINUTE SERIES (TOPOGRAPHIC)



Mapped by the Tennessee Valley Authority  
Edited and published by the Geological Survey  
Control by USGS, USCGS, and TVA  
Compiled in 1956 from 1:24 000 scale maps of the  
Rushing Creek and Hamlin 7.5 minute quadrangles,  
surveyed 1950, and Hico and New Concord 7.5 minute  
quadrangles, surveyed 1955  
Topography from aerial photographs by multiple methods  
and planimetry surveys. Aerial photographs taken  
1948 and 1955  
Polyconic projection. 1927 North American datum  
10,000-foot grids based on Kentucky coordinate system,  
south zone, and Tennessee coordinate system

TRUE NORTH  
MAGNETIC NORTH  
APPROXIMATE MEAN  
DECLINATION, 1955



ROAD CLASSIFICATION  
Heavy-duty ———— Light-duty ————  
Medium-duty ———— Unimproved dirt ————  
U.S. Route ———— State Route ————



This area also covered by 1:24 000 scale maps of  
Rushing Creek, Hico, New Concord, and Hamlin  
7.5 minute quadrangles, surveyed 1950 and 1955  
Adjoining areas also covered by 1:24 000 scale maps  
NEW CONCORD, KY.—TENN.  
N 3630—W 8800/15

THIS MAP COMPLIES WITH NATIONAL MAP ACCURACY STANDARDS  
FOR SALE BY U. S. GEOLOGICAL SURVEY, WASHINGTON 25, D. C.,  
KENTUCKY DEPARTMENT OF ECONOMIC DEVELOPMENT, FRANKFORT, KY.,  
TENNESSEE DIVISION OF GEOLOGY, NASHVILLE, TENN.,  
AND U. S. TENNESSEE VALLEY AUTHORITY, CHATTANOOGA OR KNOXVILLE, TENN.  
A FOLDER DESCRIBING TOPOGRAPHIC MAPS AND SYMBOLS IS AVAILABLE ON REQUEST

UNIVERSITY OF WISCONSIN  
Department of Geography

1955