

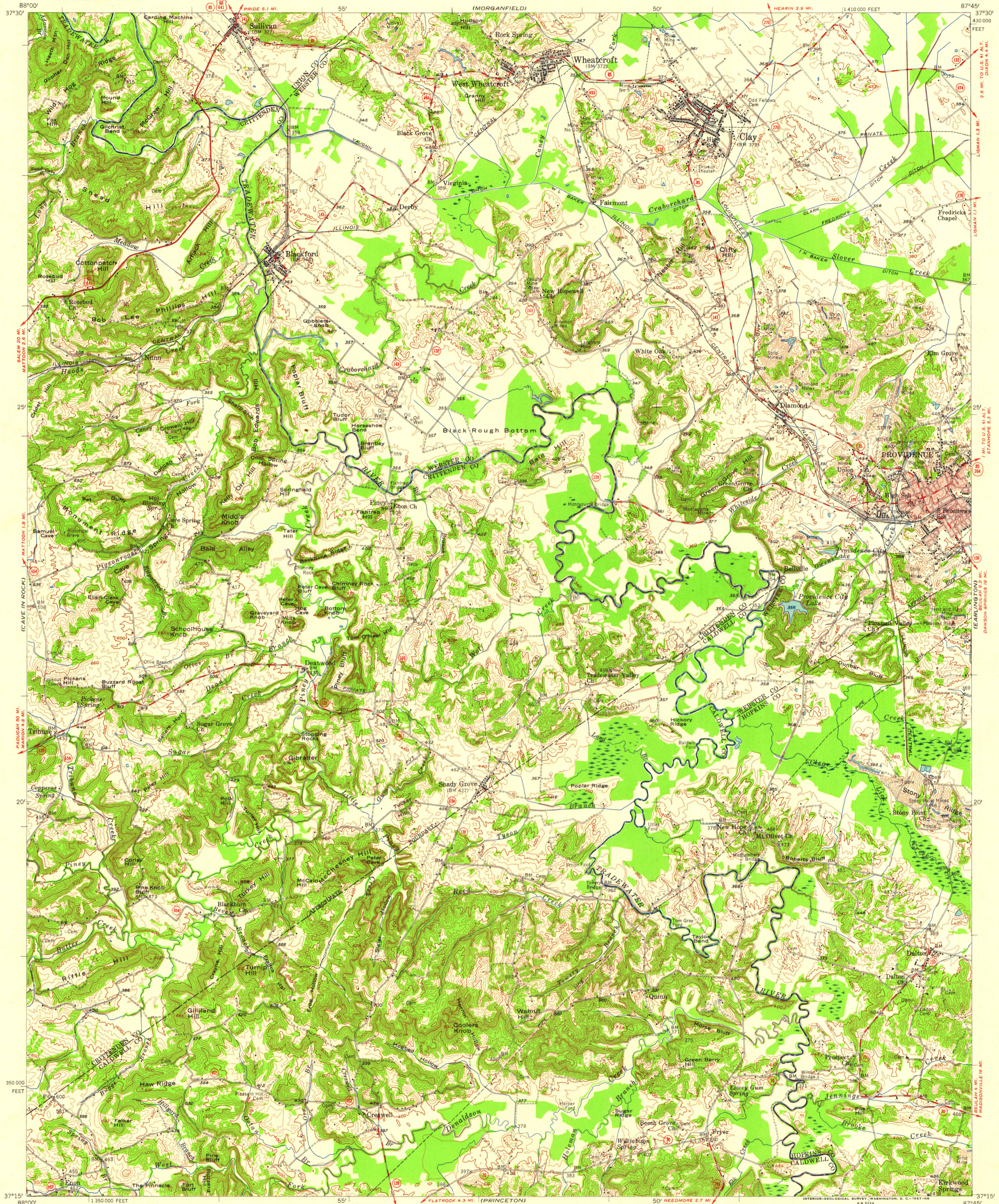
(SHAWNEETOWN)

UNITED STATES
DEPARTMENT OF THE INTERIOR
GEOLOGICAL SURVEY

STATE OF KENTUCKY
DEPARTMENT OF ECONOMIC DEVELOPMENT

PROVIDENCE QUADRANGLE
KENTUCKY
15 MINUTE SERIES (TOPOGRAPHIC)

(SEBREE)



Mapped, edited, and published by the Geological Survey
Control by USGS and USC&GS

Compiled in 1956 from 1:24 000 scale maps of the Providence, Blackford, Shady Grove, and Dalton 7.5 minute quadrangles, surveyed 1954

Topography from aerial photographs by photogrammetric methods. Aerial photographs taken 1952.

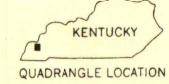
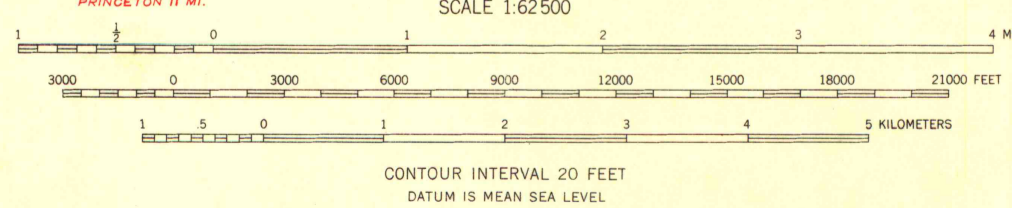
Polyconic projection. 1927 North American datum 10,000-foot grid based on Kentucky coordinate system, south zone

Red tint indicates area in which only landmark buildings are shown

All mining features on this map are inactive unless otherwise indicated

Unchecked elevations are shown in brown

TRUE NORTH
MAGNETIC NORTH
APPROXIMATE MEAN DECLINATION, 1954



ROAD CLASSIFICATION

Heavy-duty ——— Light-duty ———
Medium-duty ——— Unimproved dirt ———

U.S. Route ——— State Route ———

This area also covered by 1:24 000 scale maps of Providence, Blackford, Shady Grove, and Dalton 7.5 minute quadrangles, surveyed in 1954

Adjoining areas also covered by 1:24 000 scale maps

PROVIDENCE, KY.
N3715—W8745/15

THIS MAP COMPLIES WITH NATIONAL MAP ACCURACY STANDARDS
FOR SALE BY U. S. GEOLOGICAL SURVEY, WASHINGTON 25, D. C.
AND KENTUCKY DEPARTMENT OF ECONOMIC DEVELOPMENT, FRANKFORT, KENTUCKY
A FOLDER DESCRIBING TOPOGRAPHIC MAPS AND SYMBOLS IS AVAILABLE ON REQUEST

UNIVERSITY OF WISCONSIN
Department of Geography

1954

(EDDYVILLE)

(DANFORTH SPRINGS)