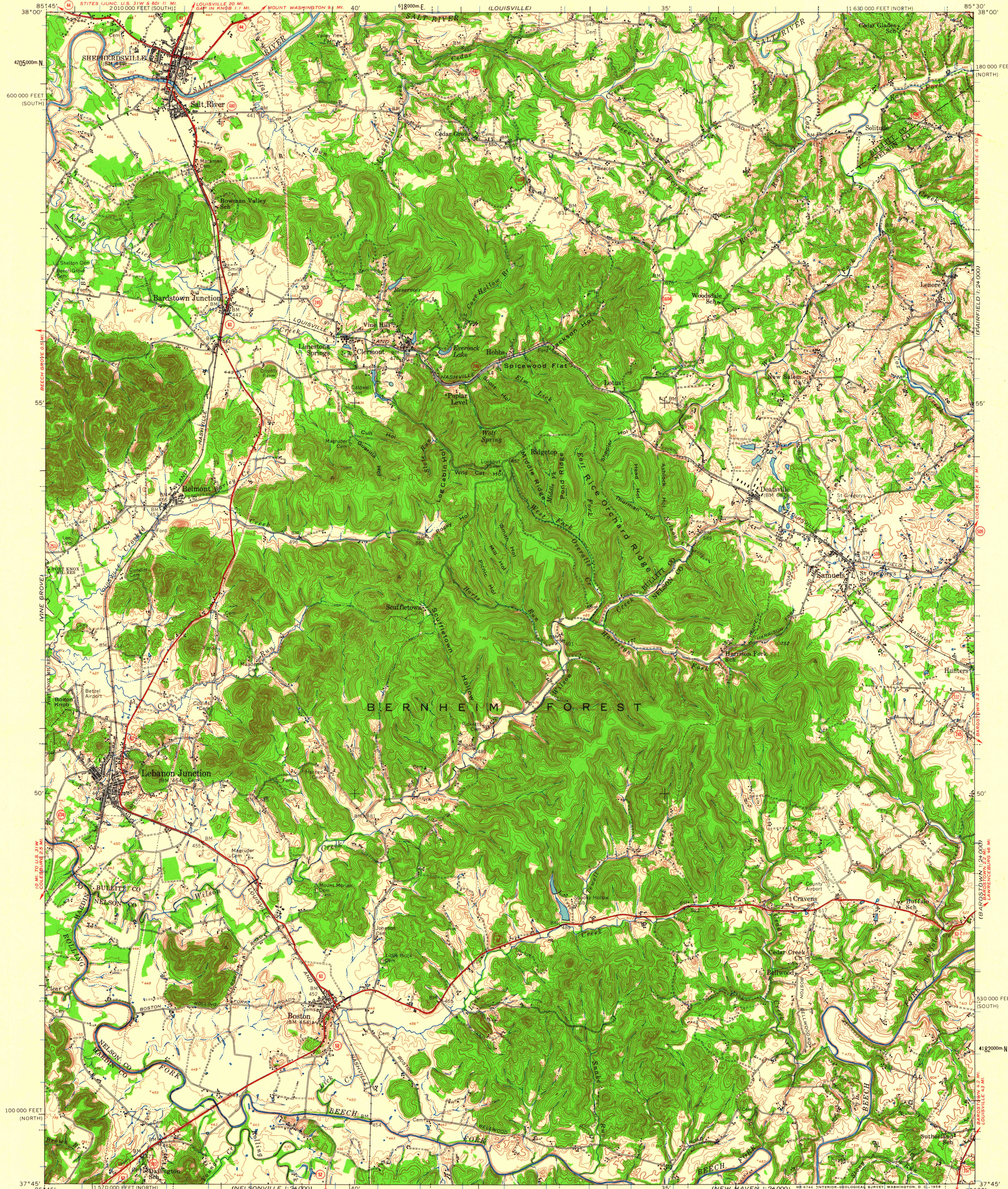


UNITED STATES
DEPARTMENT OF THE INTERIOR
GEOLOGICAL SURVEY

UNITED STATES
DEPARTMENT OF THE ARMY
CORPS OF ENGINEERS

SHEPHERDSVILLE QUADRANGLE
KENTUCKY
15 MINUTE SERIES (TOPOGRAPHIC)

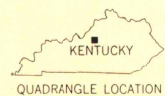


Mapped by the Army Map Service
Published for civil use by the Geological Survey
Control by USGS, USC&GS, and USCE
Compiled from 1:25 000 scale maps of Samuels,
Shepherdsville, Lebanon Junction, and Cravens 7.5 minute
quadrangles, surveyed 1948 and 1949
Topography from aerial photographs by multiplex methods
Aerial photographs taken 1947. Field check 1948-1949
Polyconic projection. 1927 North American datum
10,000-foot grids based on Kentucky coordinate system,
north and south zones
1000-meter Universal Transverse Mercator grid ticks,
zone 16, shown in blue
No distinction is made between barns, dwellings, and
commercial and industrial buildings
Unchecked elevations are shown in brown

TRUE NORTH
MAGNETIC NORTH
APPROXIMATE MEAN
DECLINATION, 1949

SCALE 1:62500
0 1 2 3 4 MILES
0 1 2 3 4 5 KILOMETERS
CONTOUR INTERVAL 20 FEET
DATUM IS MEAN SEA LEVEL

THIS MAP COMPLIES WITH NATIONAL MAP ACCURACY STANDARDS
FOR SALE BY U. S. GEOLOGICAL SURVEY, WASHINGTON 25, D. C.
AND KENTUCKY DEPARTMENT OF ECONOMIC DEVELOPMENT, FRANKFORT, KENTUCKY
A FOLDER DESCRIBING TOPOGRAPHIC MAPS AND SYMBOLS IS AVAILABLE ON REQUEST



ROAD CLASSIFICATION
Heavy-duty ——— Light-duty ———
Unimproved dirt ———
U. S. Route ——— State Route ———

This area also covered by 1:24 000 scale maps of
Samuels, Shepherdsville, Lebanon Junction, and Cravens
7.5 minute quadrangles, surveyed 1948 and 1949

SHEPHERDSVILLE, KY.
N3745-W8530/15

MAP AND AIR PHOTO LIBRARY
University of Wisconsin

1949