

TOPOGRAPHY

U.S. GEOLOGICAL SURVEY
GEORGE OTIS SMITH, DIRECTOR

STATE OF KENTUCKY
GEOLOGICAL SURVEY
C. J. NORWOOD, DIRECTOR
(Salyersville 125000)

KENTUCKY
TROUBLESOME QUADRANGLE (Prescottbury 125000)



(Salyersville)
125000

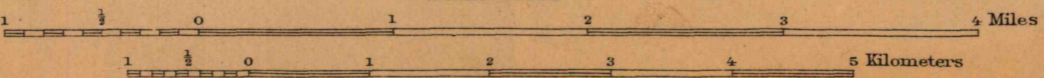
(Prescottbury)
125000

U.S.G.S.
FILE COPY
Ed. Div. Topographic Maps.

U.S.G.S.
FILE COPY

ENGRAVED AUG. 1913 BY U.S.G.S.
R.B. Marshall, Chief Geographer.
W.H. Herron, Geographer in charge.
Topography by J.R. Eakin.
Control by Geo. T. Hawkins, E.L. McNair and S.R. Archer.
Surveyed in 1911.
SURVEYED IN COOPERATION WITH THE STATE OF KENTUCKY.

USGS
Historical File
Topographic Division



Contour interval 50 feet.
Datum is mean sea level.

Edition of Feb. 1914.

FEB 28 1914 3574

MAGNETIC NORTH
TRUE NORTH
ANGLE IN DEGREES
1911

TROUBLESOME, Ky.

(Hazard)
125000

(Whitesbury)
125000