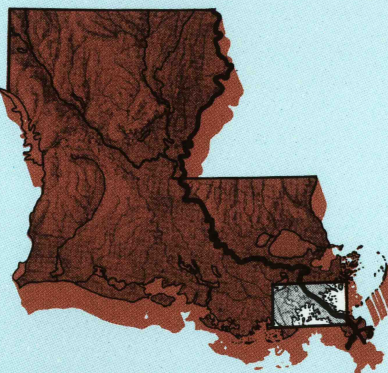


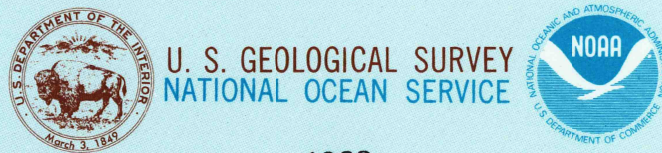
Black Bay
LOUISIANA

1:100 000-scale metric
topographic-bathymetric map



30 X 60 MINUTE QUADRANGLE
SHOWING

- Contours and elevations in meters
- Highways, roads and other manmade structures
- Water features
- Woodland areas
- Geographic names
- Bathymetric contours in meters



1983

Produced by the United States Geological Survey
and the National Ocean Service

Compiled from USGS 1:250,000-scale topographic maps dated 1901-79
and bathymetric charts dated 1973. Elevations rounded to the nearest
meter. Bathymetric contours rounded to the nearest meter. "T" denotes
tidal data. "N" denotes nontidal data. "F" denotes information not
field checked. Map dated 1983.

Bathymetry compiled by the National Ocean Service from tide-coordinated
hydrographic surveys. This information is not intended for navigational purposes.
Mean low water (dotted line) and mean high water (dashed line) compiled by
NOS from tide-coordinated aerial photographs. Apparent shoreline (outer edge of
vegetation) shown by light solid line.

Projection and 10 000-meter grid, zone 16: Universal Transverse Mercator
25 000-foot grid, based on Louisiana coordinate system, north zone.
1927 North American Datum. To place on the projected North American Datum 1983, move the projection lines
19 meters south and 6 meters east.

Offshore projection survey data, shown in red, compiled by the Bureau of Land
Management. Heavy lines show the 25 000-foot grid. US Coast and Geodetic Survey Official
Projection Diagram dated July 22, 1954. The projections on this map are
not for Federal listing purposes. For each purpose, refer to the 1:250 000-scale
USGS Official Projection Diagrams available from the Bureau of Land
Management.

There may be private suballings within the boundaries of the National or State
reservations shown on this map.
All or part of this quadrangle lies within a subsidence area.

CONTOUR INTERVAL 2 METERS
NATIONAL GEODETIC VERTICAL DATUM OF 1929
ELEVATIONS SHOWN TO THE NEAREST 0.5 METER
BATHYMETRIC CONTOUR INTERVAL 2 METERS WITH SUPPLEMENTARY
1 METER CONTOURS: MEAN LOWER LOW-WATER DATUM
THE RELATIONSHIP BETWEEN THE TWO DATUMS IS VARIABLE

BASE MAP COMPLES WITH NATIONAL MAP ACCURACY
STANDARDS. BATHYMETRIC SURVEY DATA COMPLES WITH
INTERNATIONAL HYDROGRAPHIC ORGANIZATION (IHO) SPECIAL
PUBLICATION 44 ACCURACY STANDARDS AND/OR STANDARDS
USED AS OF THE DATE OF THE SURVEYS

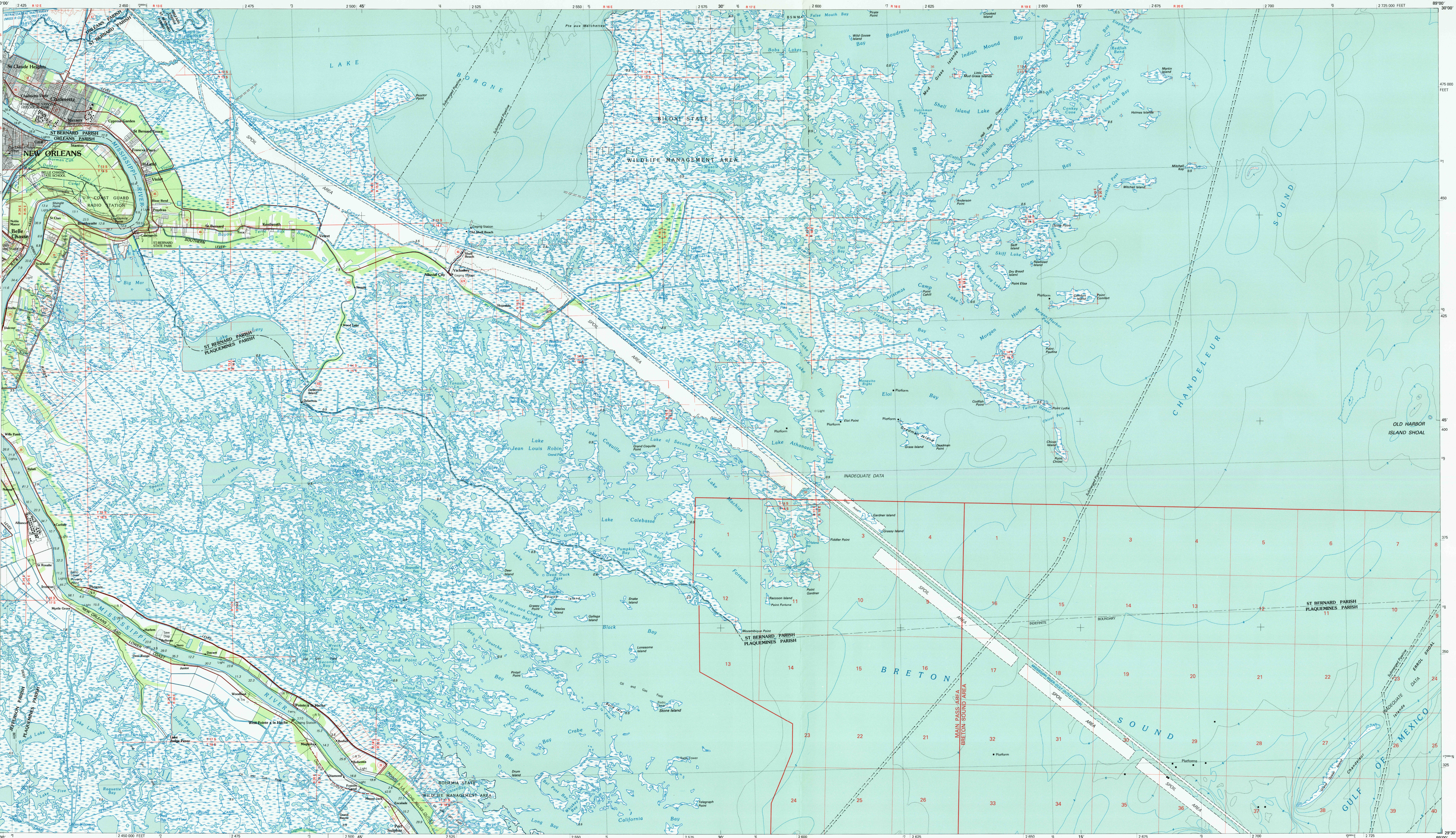
CONVERSION TABLE		DECLINATION DIAGRAM		ADJOINING MAPS		
Meters	Feet	MAGNETIC DECLINATION		1	2	3
1	3.2808	1983		4	5	
2	6.5617	ON 1		6	7	8
3	9.8425	17° 14' 30"				
4	13.1234	22 MILS				
5	16.4042	27 MILS				
6	19.6850	32 MILS				
7	22.9659	37 MILS				
8	26.2467	42 MILS				
9	29.5275	47 MILS				
10	32.8084	52 MILS				
To convert meters to feet multiply by 3.2808		UTM grid convergence (IGM and 1983 magnetic declination) (M)		1	2	3
To convert feet to meters multiply by 0.3048		Diagram is approximate		4	5	6
				7	8	9

FOR SALE BY U. S. GEOLOGICAL SURVEY
DENVER, COLORADO 80202 OR RESTON, VIRGINIA 22092
AND NATIONAL OCEAN SERVICE, ROCKVILLE, MARYLAND 20852

Topographic Map Symbols

Primary highway, hard surface	Secondary highway, hard surface	Light duty road, principal street, hard or improved surface	Other road or street, trail	Route marker, Interstate, U. S. State	Refract: standard page; narrow page	Bridge, overpass, underpass	Tunnel: road, railroad	Built-up area, locality, elevation	Airport: landing field, landing strip	National boundary	State boundary	County boundary	National or State reservation boundary	Land grant boundary	U. S. public lands survey: range, township, section	Range, township, section line, projected	Power transmission line, pipeline	Dam; dam with lock	Cemetery, building	Woods: wet, well, spring	Mine shaft; adit or cave; mine, quarry; gravel pit	Campground, picnic area; U. S. location monument	Railroad: off-siding	Disturbed surface: strip mine, levee, sand	Contours: index, intermediate, supplementary	Bathymetric contours: index, intermediate	Stream, lake, perennial, intermittent	Region, large and small; lake, large and small	Land subject to controlled inundation; woodland	Sandy, mangrove	Orchard; vineyard
-------------------------------	---------------------------------	---	-----------------------------	---------------------------------------	-------------------------------------	-----------------------------	------------------------	------------------------------------	---------------------------------------	-------------------	----------------	-----------------	--	---------------------	---	--	-----------------------------------	--------------------	--------------------	--------------------------	--	--	----------------------	--	--	---	---------------------------------------	--	---	-----------------	-------------------

A pamphlet describing topographic maps is available on request



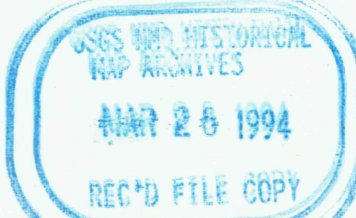
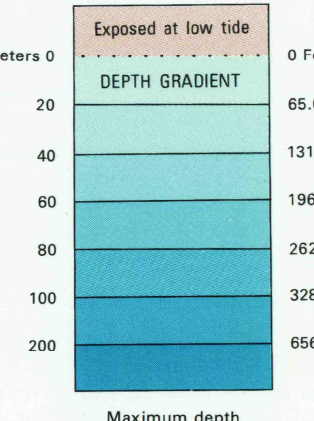
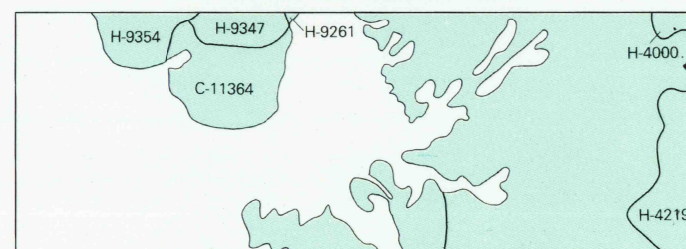
SCALE 1:100 000
1 CENTIMETER ON THE MAP REPRESENTS 1 KILOMETER ON THE GROUND
CONTOUR INTERVAL 2 METERS

HYDROGRAPHIC SURVEY INFORMATION

SURVEY NUMBER	SURVEY DATE	SURVEY SCALE	SURVEY DATE
H-4000	1917	1:40 000	05. 11
H-4219	1922	1:40 000	10. 09
H-4227	1922	1:40 000	10. 09
H-4227	1921	1:20 000	02. 10
H-4227	1917-23	1:10 000	05. 20
H-4227	1913	1:20 000	05. 15

NOS CHART 1186 1978 1:60 000
NOS CHART 1186 1980 1:60 000

HYDROGRAPHIC SURVEY INDEX



Photographic copies of the above and prior surveys may be obtained, at the cost of reproduction
by addressing the Director (NCEC 242) National Ocean Service, National Ocean and Atmospheric
Administration, Rockville, Maryland 20852