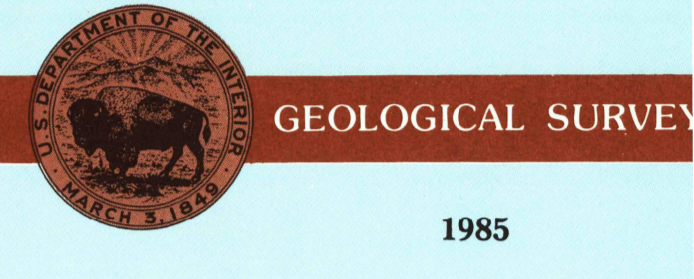


- Contours and elevations in meters
- Highways, roads and other manmade structures
- Water features
- Woodland areas
- Geographic names



Produced by the United States Geological Survey  
 Compiled from USGS 1:24 000-scale topographic maps dated 1949-1982. Planimetry revised from aerial photographs taken 1982-83 and other source data. Revised information not field checked. Map edited 1985.  
 Projection and 10 000-meter grid, zone 15 Universal Transverse Mercator  
 25 000-foot grid ticks based on Louisiana coordinate system, north zone, 1927 North American Datum  
 To place on the predicted North American Datum 1983 move the projection lines 13 meters south and 14 meters east  
 There may be private inholdings within the boundaries of the National or State reservations shown on this map

CONTOUR INTERVAL 10 METERS  
 NATIONAL GEODETIC VERTICAL DATUM OF 1929  
 ELEVATIONS SHOWN TO THE NEAREST METER

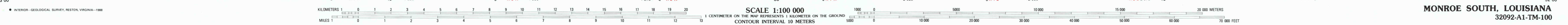
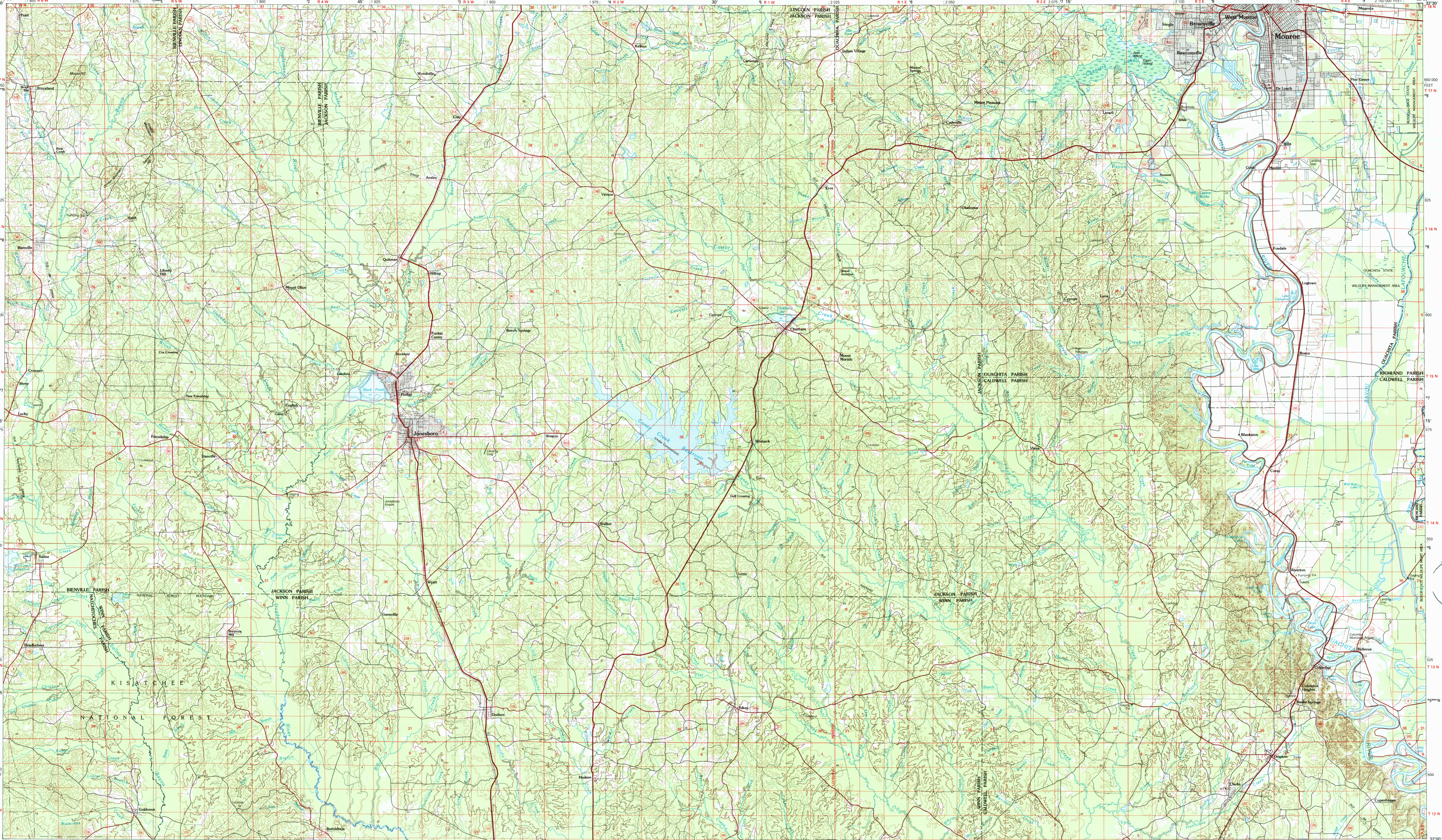
THIS MAP COMPLES WITH NATIONAL MAP ACCURACY STANDARDS

CONVERSION TABLE		DECLINATION DIAGRAM		ADJOINING MAPS					
Meters	Feet	GN	MN	1	2	3	4		
1	3.2808		0°16' 40"	1	2	3	4		
2	6.5616			5	6	7	8		
3	9.8424								
4	13.1232								
5	16.4040								
6	19.6848								
7	22.9656								
8	26.2464								
9	29.5272								
10	32.8080								

To convert meters to feet multiply by 3.2808  
 To convert feet to meters multiply by 0.3048

UTM grid convergence (GN) and 1983 magnetic declination (MN) at center of map. Diagram is approximate.

1 Shreveport North  
 2 Monroe North  
 3 Bayou  
 4 Shreveport South  
 5 Natchitoches  
 6 Natchitoches  
 7 Natchitoches  
 8 Natchez



PRINTED AND SOLD BY U. S. GEOLOGICAL SURVEY, DENVER, COLORADO 80225 OR RESTON, VIRGINIA 22092

APR 28 1989 REC'D FILE COPY Topographic Map Symbols

- Primary highway, hard surface
- Secondary highway, hard surface
- Light duty road, principal street, hard or improved surface
- Other road or street, trail
- Route marker: Interstate, U. S., State
- Area to be submerged; marsh swamp
- Bridge; overpass; underpass
- Tunnel; road; railroad
- Built up area; locality; elevation
- Airport; landing field; landing strip
- National boundary
- State boundary
- County boundary
- National or State reservation boundary
- Land grant boundary
- U. S. public lands survey: range, township; section
- Range, township; section line: protected
- Power transmission line; pipeline
- Dam; dam with lock
- Cemetery; building
- Wellhead; water well; spring
- Mine shaft; adit or cave; mine, quarry; gravel pit
- Campground; picnic area, U. S. location monument
- Ruin; still dwelling
- Disputed survey; strip mine; levee; sand
- Contours: index; intermediate; supplementary
- Bathymetric contours: index; intermediate
- Stream, lake; perennial; intermittent
- Rapids, large and small; falls, large and small
- Area to be submerged; marsh swamp
- Land subject to controlled inundation; woodland
- Scrub; mangrove
- Orchard; vineyard