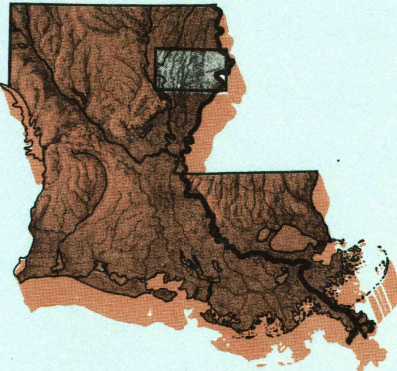


# Tallulah

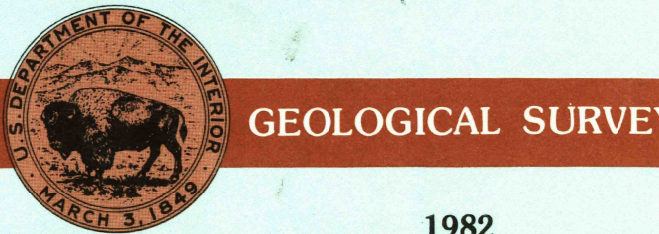
## LOUISIANA—MISSISSIPPI

1:100 000-scale *metric*  
topographic map



30 X 60 MINUTE QUADRANGLE  
SHOWING

- Contours and elevations in meters
- Highways, roads and other manmade structures
- Water features
- Woodland areas
- Geographic names



Produced by the United States Geological Survey  
Compiled from USGS 1:24 000 and 1:62 500-scale topographic maps dated 1957-1969. Planimetry revised from aerial photographs taken 1979 and other source data. Revised information not field checked. Map edited 1982.  
Projection and 10 000-meter grid, zone 15  
Universal Transverse Mercator  
25 000-foot grid ticks based on Louisiana coordinate system, north zone, and Mississippi coordinate system, west zone 1927 North American Datum  
To place on the predicted North American Datum 1983 move the projection lines 13 meters south and 11 meters east  
There may be private inholdings within the boundaries of the National or State reservations shown on this map  
CONTOUR INTERVAL 5 AND 10 METERS  
NATIONAL GEODETIC VERTICAL DATUM OF 1929  
ELEVATIONS SHOWN TO THE NEAREST METER

CONTOUR INTERVAL		CONTOUR INTERVAL	
5M	10M	5M	10M
THIS MAP COMPLIES WITH NATIONAL MAP ACCURACY STANDARDS			
CONVERSION TABLE		DECLINATION DIAGRAM	
Meters	Feet	ON	OFF
1	3.2808	ON	OFF
2	6.5617	ON	OFF
3	9.8425	ON	OFF
4	13.1234	ON	OFF
5	16.4042	ON	OFF
6	19.6850	ON	OFF
7	22.9659	ON	OFF
8	26.2467	ON	OFF
9	29.5276	ON	OFF
10	32.8084	ON	OFF
To convert meters to feet multiply by 3.2808		UTM grid convergence (GM) and 1983 magnetic declination (MN) at center of map	
To convert feet to meters multiply by 0.3048		Diagram is approximate	
ADJOINING MAPS		1	2
1	2	3	4
5	6	7	8
1. Bastrop		2. Vicksburg	
3. Vicksburg		4. Jackson	
5. Jackson		6. Natchez	
7. Natchez		8. Brookhaven	

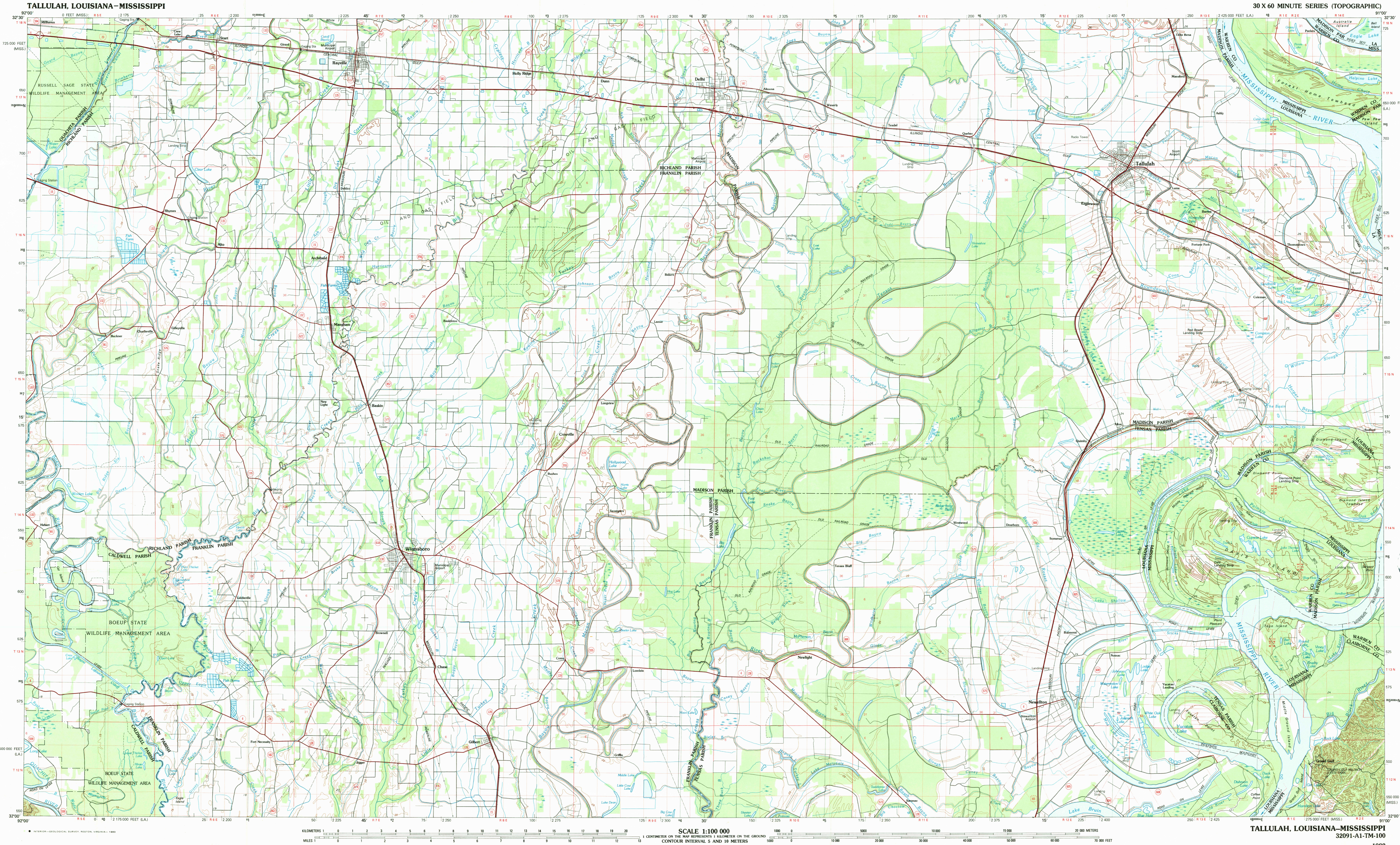
FOR SALE BY U.S. GEOLOGICAL SURVEY, DENVER, COLORADO 80225  
OR RESTON, VIRGINIA 22092

REC'D FILE COPY

### Topographic Map Symbols

- Primary highway, hard surface
- Secondary highway, hard surface
- Light duty road, principal street, hard or improved surface
- Other road or street, track
- Railroad: standard gage, narrow gage
- Bridge: overpass, underpass
- Tunnel: road, railroad
- Built-up area: locality, elevation
- Airport: landing field, landing strip
- National boundary
- State boundary
- County boundary
- National or State reservation boundary
- Land grant boundary
- U.S. public lands survey: range, township, section
- Range, township, section line: protected
- Power transmission line: pipeline
- Dam: dam with lock
- Cemetery: building
- Windmill; water well; spring
- Mine shaft; adit or cave; mine, quarry; gravel pit
- Campground; picnic area; U.S. location monument
- Rail: cut dwelling
- Disturbed surface: strip mine, lava, sand
- Contours: index; intermediate; supplementary
- Bathymetric contours: index; intermediate
- Stream, lake: perennial; intermittent
- Stream, lake: seep and small; falls, large and small
- Area to be submerged: marsh, swamp
- Land subject to controlled inundation; woodland
- Scrub; mangrove
- Orchard; vineyard

A pamphlet describing topographic maps is available on request



SCALE 1:100 000  
1 CENTIMETER ON THE MAP REPRESENTS 1 KILOMETER ON THE GROUND  
CONTOUR INTERVAL 5 AND 10 METERS

TALLULAH, LOUISIANA—MISSISSIPPI  
32091-A1-TM-10C