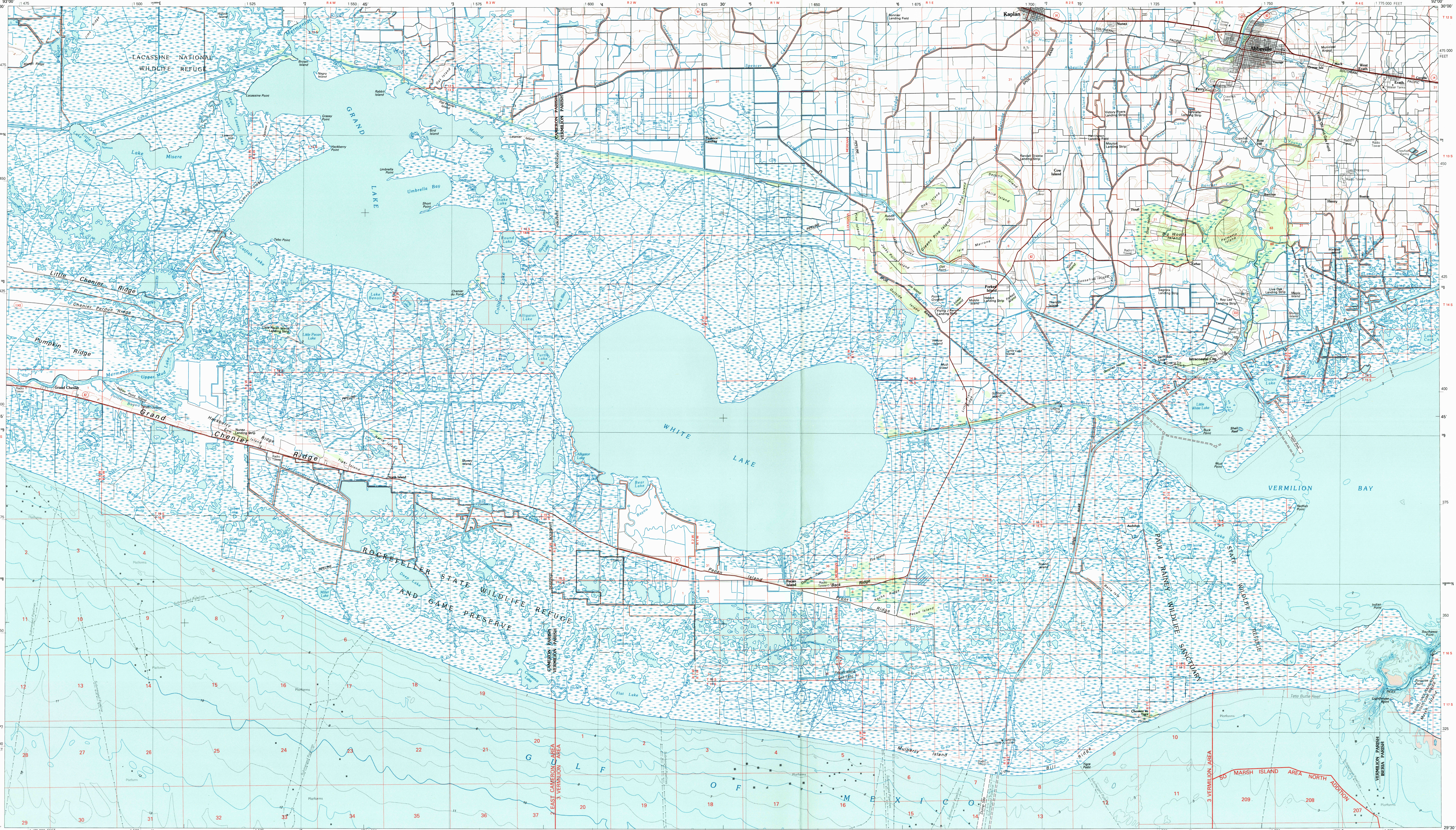


WHITE LAKE, LOUISIANA

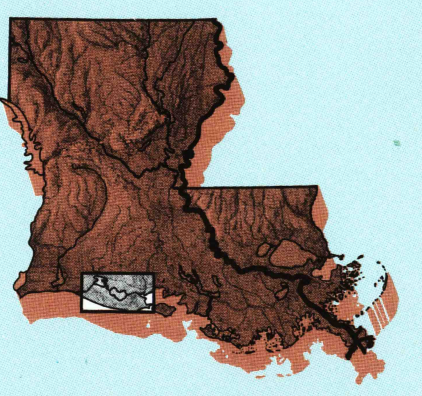
30 X 60 MINUTE SERIES (TOPOGRAPHIC-BATHYMETRIC)



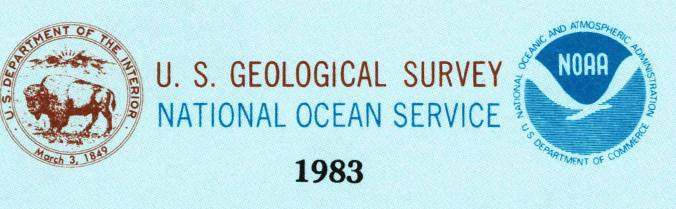
White Lake

LOUISIANA

1:100 000-scale metric
topographic-bathymetric map



- 30 X 60 MINUTE QUADRANGLE SHOWING
- Contours and elevations in meters
 - Highways, roads and other manmade structures
 - Water features
 - Woodland areas
 - Geographic names
 - Bathymetric contours in meters



Produced by the United States Geological Survey and the National Ocean Service. Compiled from USGS 1:250,000-scale topographic maps dated 1975-1980. Bathymetry compiled by the National Ocean Service from tide-coordinated hydrographic surveys. This information is not intended for navigational purposes. Mean low water (dotted line) and mean high water (heavy solid line) contours are shown. Contour interval is 2 meters. Apparent shoreline (outer edge of vegetation) shown by light solid line. Projection and 30 second grid lines are U.S. National Meridian 25 000-foot grid ticks based on Louisiana coordinate system, south zone 1927 North American Datum. To place on the predicted North American Datum 1983, move the projection lines 30 meters south and 18 meters east. Obsolete protection survey data, shown in red, compiled by the Bureau of Land Management. Heavy lines indicate limits of BLM Outer Continental Shelf Official Protection Diagrams. For Federal leasing purposes, for such purposes, refer to the 1:250,000-scale OCS Official Protection Diagrams available from the Bureau of Land Management. There may be private inholdings within the boundaries of the National or State reservations shown on this map. All or part of this quadrangle lies within a subsidence area.

CONTOUR INTERVAL 2 METERS
NATIONAL GEODETIC VERTICAL DATUM OF 1988
BATHYMETRIC CONTOUR INTERVAL 2 METERS WITH SUPPLEMENTARY 1 METER CONTOURS NEAR LOWER LOW WATER DATUM. THE RELATIONSHIP BETWEEN THE TWO DATUMS IS VARIABLE.

BASE MAP COMPLES WITH NATIONAL MAP ACCURACY STANDARDS. BATHYMETRIC SURVEY DATA COMPLES WITH INTERNATIONAL HYDROGRAPHIC ORGANIZATION (IHO) SPECIAL PUBLICATION 46 ACCURACY STANDARDS AND/OR STANDARDS LATEST AS OF THE DATE OF THE SURVEYS.

Meters	Feet	DECLINATION DIAGRAM	ADJOINING MAPS
1	3.2808		1 2 3
2	6.5617		4 5
3	9.8425		6 7 8
4	13.1234		
5	16.4042		
6	19.6851		
7	22.9659		
8	26.2468		

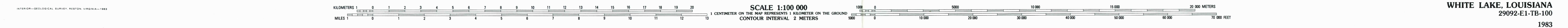
To convert meters to feet multiply by 3.2808
To convert feet to meters multiply by 0.3048
UTM grid convergence (GN) and 1983 magnetic declination (MD) Diagram is appropriate

ISBN 0-607-23066-5
9 780607 230666

Topographic Map Symbols

- Primary highway, hard surface
- Secondary highway, hard surface
- Light duty road, principal street, hard or improved surface
- Other road or street, trail
- Railroad, standard gauge, U. S. State
- Railroad, standard gauge, narrow gauge
- Bridge, overpass, underpass
- Tunnel, road, railroad
- Built up area, locality, elevation
- Airport, landing field, landing strip
- National boundary
- State boundary
- County boundary
- National or State reservation boundary
- Land grant boundary
- U. S. public lands survey, range, township, section
- Range, township, section line, protruded
- Power transmission line, pipeline
- Dam, dam with lock
- Canary, building
- Windmill, water well, spring
- Mine shaft, adit or ore mine, quarry, gravel pit
- Campground, picnic area, U. S. location monument
- Ruin, cliff dwelling
- Dotted surface, strip mine, levee, sand
- Contours, index, intermediate, supplementary
- Bathymetric contours, index, intermediate
- Stream, lake, perennial, intermittent
- Reefs, large and small, bays, large and small
- Area to be submerged, marsh, wetlands
- Land subject to controlled inundation, woodland
- Sorak, mangrove
- Drabak, weaver

A pamphlet describing topographic maps is available on request.
FOR SALE BY U.S. GEOLOGICAL SURVEY
P.O. BOX 222896, DENVER, COLORADO 80222
AND NATIONAL OCEAN SERVICE, ROCKVILLE, MARYLAND 20852
BATHYMETRIC MAPS FOR SALE BY NOS ONLY

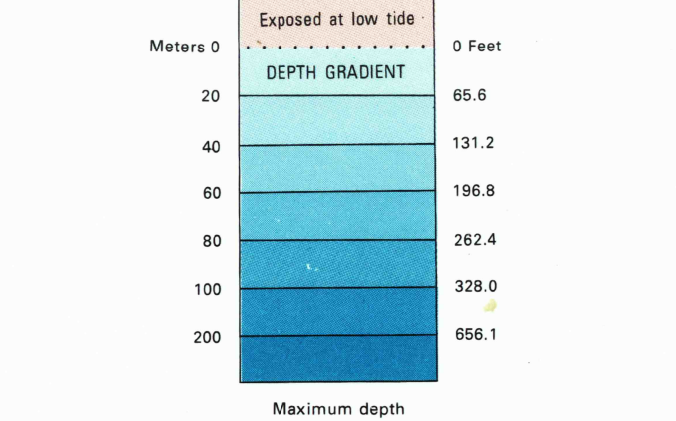
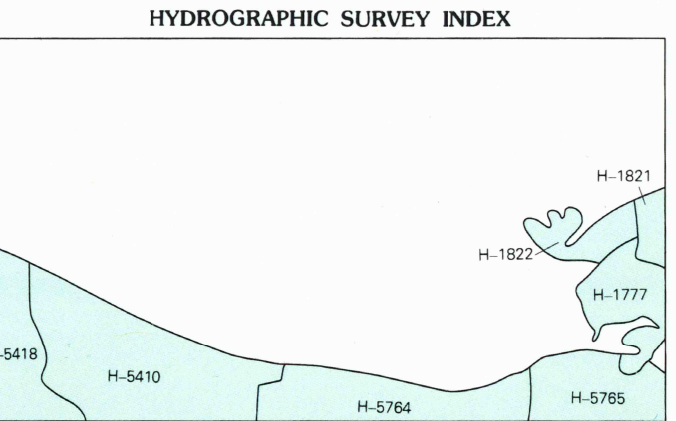


WHITE LAKE, LOUISIANA
29092-E1-TB-100
1983

USGS 400 HISTORICAL MAP ARCHIVES
JUN 30 1997
REC'D FILE COPY

HYDROGRAPHIC SURVEY INFORMATION

SURVEY NUMBER	SURVEY DATE	SURVEY SCALE	LINE SPACING (METERS)
H-1777	1888	1:30,000	62-30
H-1802	1888	1:30,000	62-43
H-2002	1925-34	1:60,000	62-40
H-2418	1934	1:40,000	20-12
H-2524	1934	1:40,000	20-43



Photographic copies of the above and prior surveys may be obtained at the cost of reproduction by addressing the Director, U.S. Geological Survey, National Ocean and Atmospheric Administration, Rockville, Maryland 20852