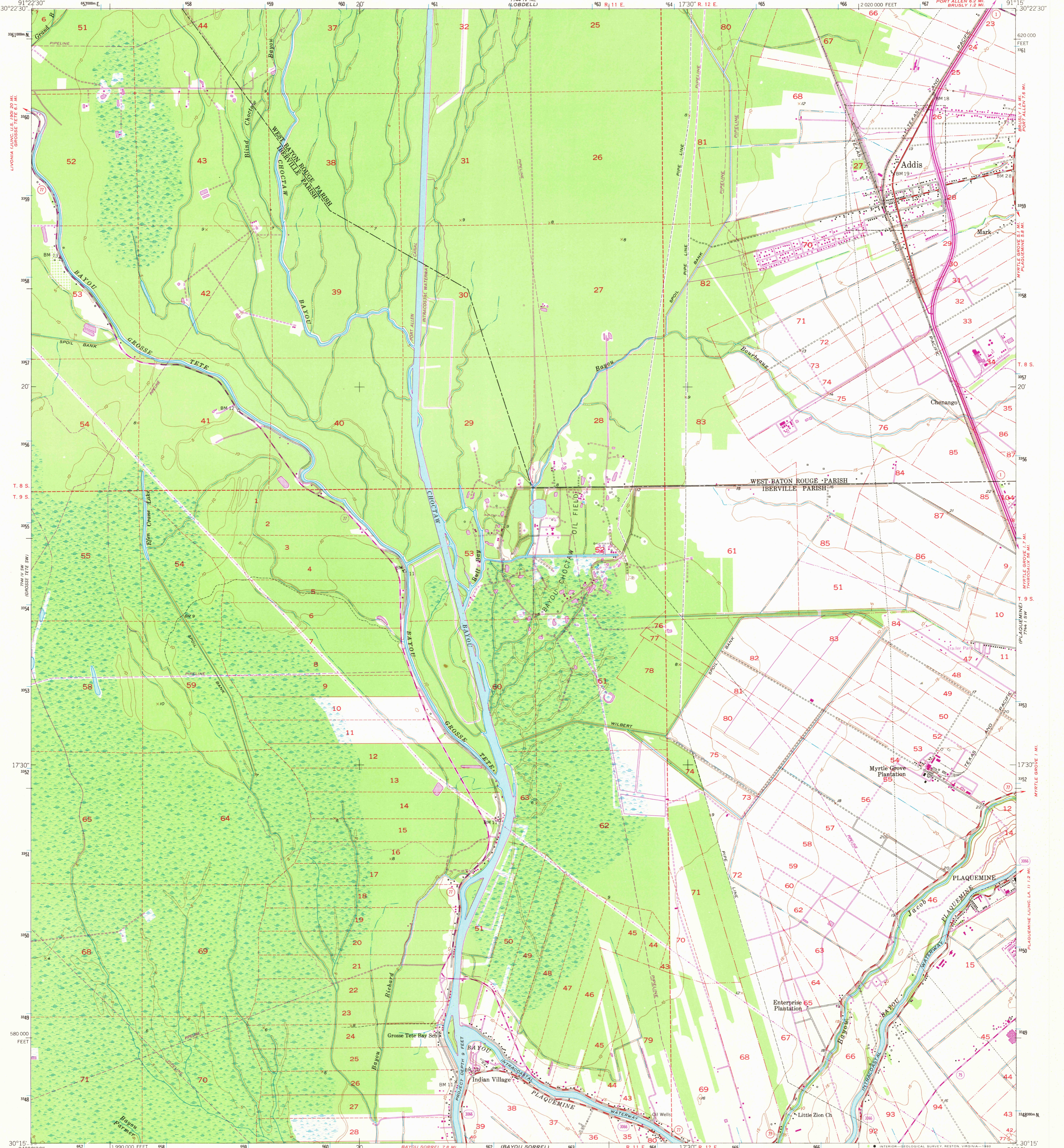


UNITED STATES
DEPARTMENT OF THE INTERIOR
GEOLOGICAL SURVEY

ADDIS QUADRANGLE
LOUISIANA
7.5 MINUTE SERIES (TOPOGRAPHIC)
SE/4 GROSSE TETE 15' QUADRANGLE



Mapped, edited, and published by the Geological Survey

Control by USGS, USC&GS, and USCE

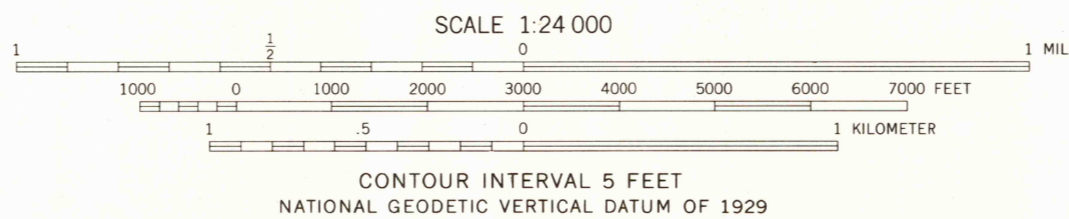
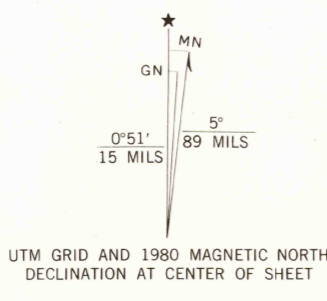
Culture and drainage in part compiled from aerial photographs taken 1952. Topography by plane-table surveys 1953

Polycyclic projection. 1927 North American datum 10,000-foot grid based on Louisiana coordinate system, south zone

Dashed land lines indicate approximate locations

1000-meter Universal Transverse Mercator grid ticks, zone 15, shown in blue

To place on the predicted North American Datum 1983 move the projection lines 18 meters south and 11 meters east as shown by dashed corner ticks



THIS MAP COMPLIES WITH NATIONAL MAP ACCURACY STANDARDS FOR SALE BY U. S. GEOLOGICAL SURVEY, DENVER, COLORADO 80225, OR RESTON, VIRGINIA 22092 AND STATE OF LOUISIANA, DEPARTMENT OF PUBLIC WORKS, BATON ROUGE, LOUISIANA 70804 A FOLDER DESCRIBING TOPOGRAPHIC MAPS AND SYMBOLS IS AVAILABLE ON REQUEST

Revisions shown in purple compiled from aerial photographs taken 1971 and 1978. Woodland compiled 1978. Map edited 1980 This information not field checked



USGS
Historical File
Topographic Division

ROAD CLASSIFICATION

Heavy-duty ——— Light-duty ———
Medium-duty ——— Unimproved dirt ———

State Route

OCT 29 1980

ADDIS, LA.
SE/4 GROSSE TETE 15' QUADRANGLE
N3015-W9115/7.5

1953
PHOTOREVISED 1971 AND 1980
DMA 7744 IV SE-SERIES V885

2295