

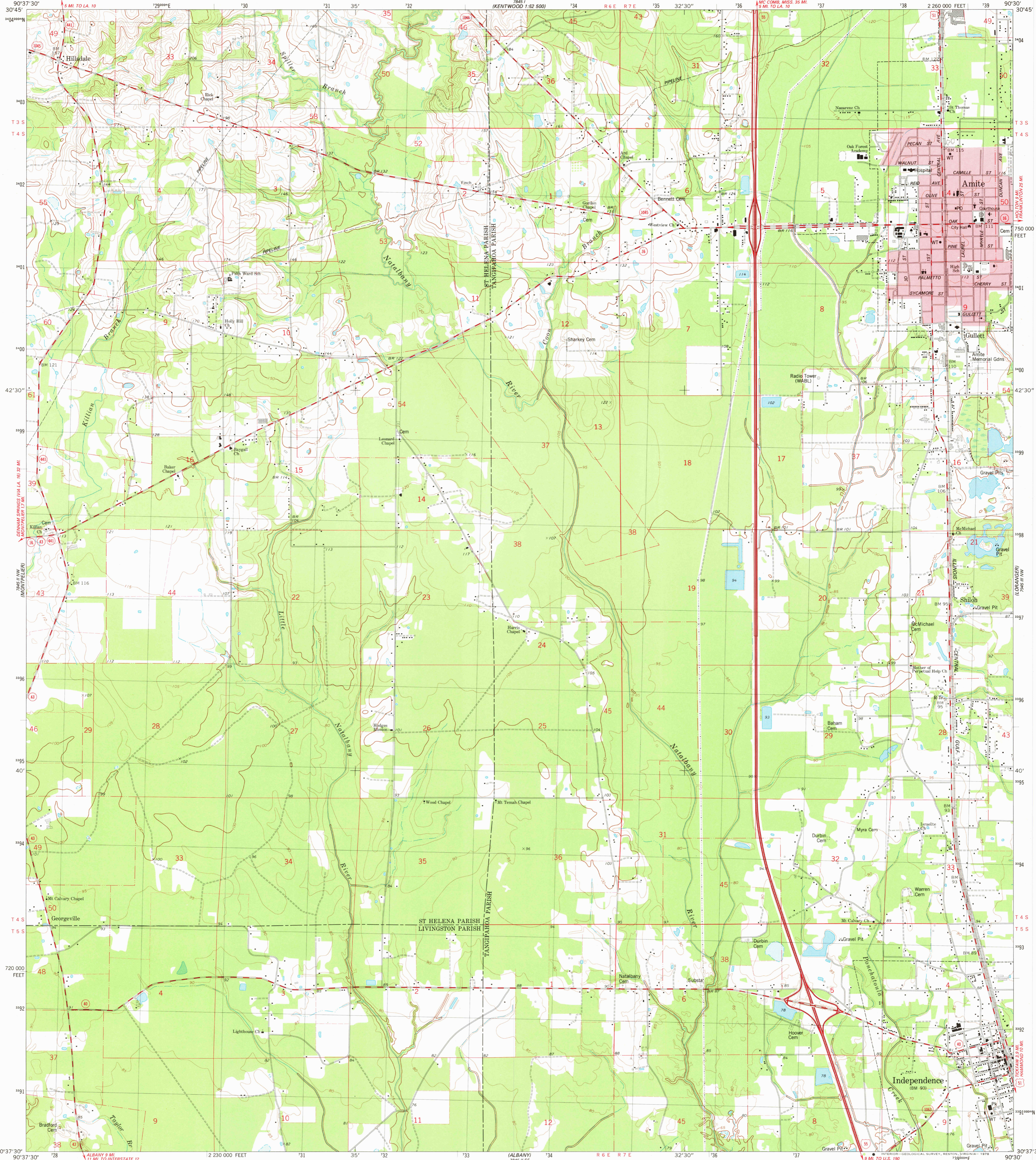
7845 II NE  
1:24,000

UNITED STATES  
DEPARTMENT OF THE INTERIOR  
GEOLOGICAL SURVEY

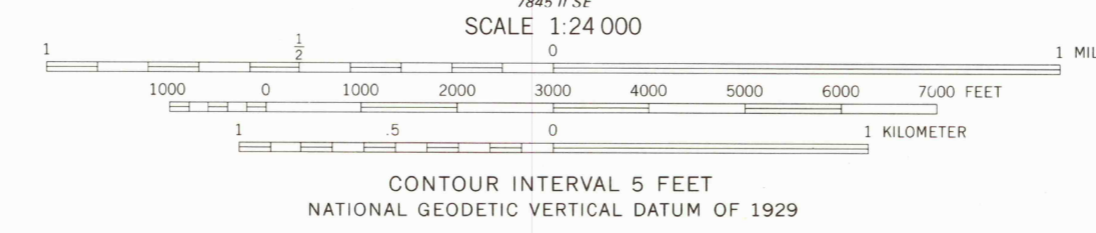
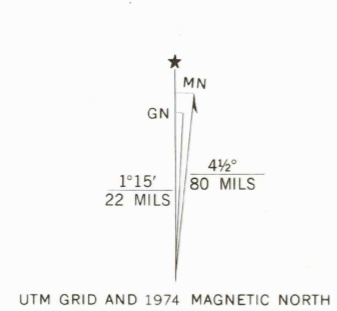
STATE OF LOUISIANA  
DEPARTMENT OF PUBLIC WORKS  
BATON ROUGE

AMITE QUADRANGLE  
LOUISIANA  
7.5 MINUTE SERIES (TOPOGRAPHIC)

7845 II NE  
1:24,000



Mapped, edited, and published by the Geological Survey  
Control by USGS, NOS/NOAA and Louisiana Geodetic Survey  
Topography by photogrammetric methods from aerial  
photographs taken 1974. Field checked 1974  
Projection and 10,000-foot grid ticks: Louisiana coordinate  
system, south zone (Lambert conformal conic)  
1000-meter Universal Transverse Mercator grid,  
zone 15. 1927 North American datum  
Red tint indicates area in which only landmark buildings are shown  
Fine red dashed lines indicate selected fence and field lines where  
generally visible on aerial photographs. This information is unchecked



ROAD CLASSIFICATION  
Primary highway, hard surface  
Secondary highway, hard surface  
Light-duty road, hard or improved surface  
Unimproved road  
Interstate Route  
U. S. Route  
State Route

THIS MAP COMPLIES WITH NATIONAL MAP ACCURACY STANDARDS  
FOR SALE BY U. S. GEOLOGICAL SURVEY, DENVER, COLORADO 80225, OR RESTON, VIRGINIA 22092  
AND BY THE STATE OF LOUISIANA, DEPARTMENT OF PUBLIC WORKS, BATON ROUGE, LOUISIANA 70804  
A FOLDER DESCRIBING TOPOGRAPHIC MAPS AND SYMBOLS IS AVAILABLE ON REQUEST

USGS  
Historical File  
Topographic Division

AMITE, LA.  
NE 1/4 AMITE 15' QUADRANGLE  
N3037.5-W90307.5  
1974

JUN 21 1978

AMS 7845 II NE-SERIES V885