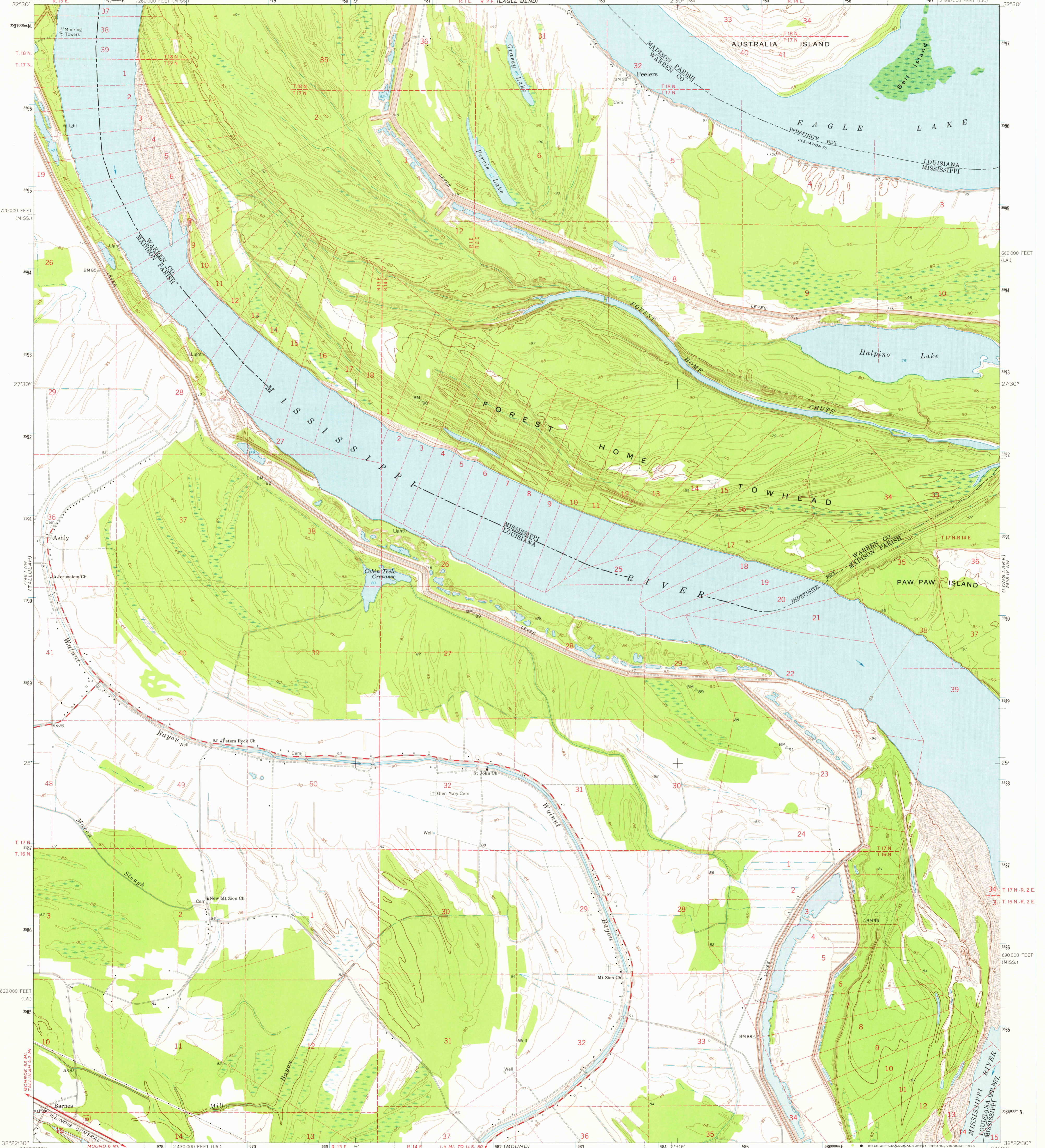


27° 15' N  
(SONGHIENER)

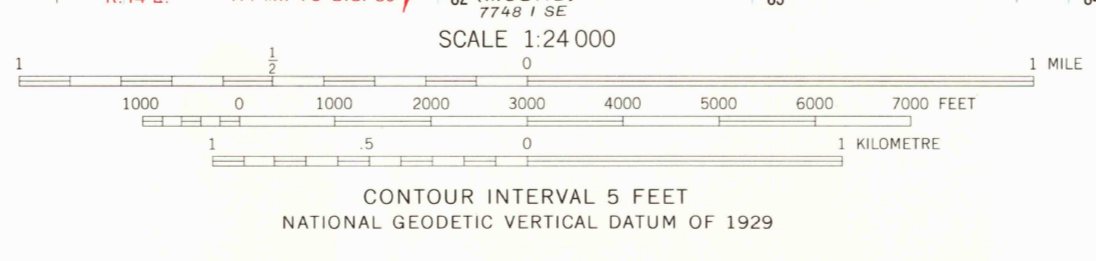
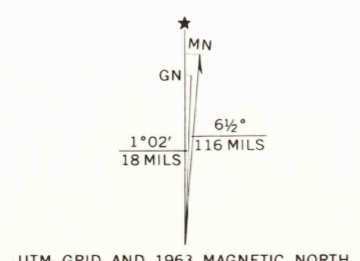
UNITED STATES  
DEPARTMENT OF THE INTERIOR  
GEOLOGICAL SURVEY

ASHLY QUADRANGLE  
LOUISIANA-MISSISSIPPI  
7.5 MINUTE SERIES (TOPOGRAPHIC)  
NE/4 TALLA BENA 15' QUADRANGLE

27° 15' N  
(SONGHIENER)



Mapped, edited, and published by the Geological Survey  
Control by USGS, USC&GS, USCE, and Louisiana Geodetic Survey  
Planimetry by photogrammetric methods from aerial photographs taken 1962. Topography by planimetric surveys 1962-63  
Polyconic projection. 1927 North American datum  
10,000-foot grids based on Louisiana coordinate system, north zone and Mississippi coordinate system, west zone  
1000-metre Universal Transverse Mercator grid ticks, zone 15, shown in blue  
Where omitted, land lines have not been established  
Fine red dashed lines indicate selected fence and field lines where generally visible on aerial photographs. This information is unchecked  
Map photoinspected 1972  
No major culture or drainage changes observed



ROAD CLASSIFICATION

Heavy-duty	Light-duty
Medium-duty	Unimproved dirt
U.S. Route	



THIS MAP COMPLIES WITH NATIONAL MAP ACCURACY STANDARDS  
FOR SALE BY U. S. GEOLOGICAL SURVEY, DENVER, COLORADO 80225, OR RESTON, VIRGINIA 22092  
AND BY THE STATE OF LOUISIANA, DEPARTMENT OF PUBLIC WORKS, BATON ROUGE, LOUISIANA 70804  
A FOLDER DESCRIBING TOPOGRAPHIC MAPS AND SYMBOLS IS AVAILABLE ON REQUEST

USGS  
HISTORICAL FILE  
TOPOGRAPHIC DIVISION

ASHLY, LA.-MISS. FEB 17 1976  
NE/4 TALLA BENA 15' QUADRANGLE  
N3222.5-W9100/7.5  
1963  
PHOTOINSPECTED 1972  
AMS 7748 I NE-SERIES V885

27° 15' N  
(FORTUNE FORK)

27° 15' N  
(FORTUNE FORK)