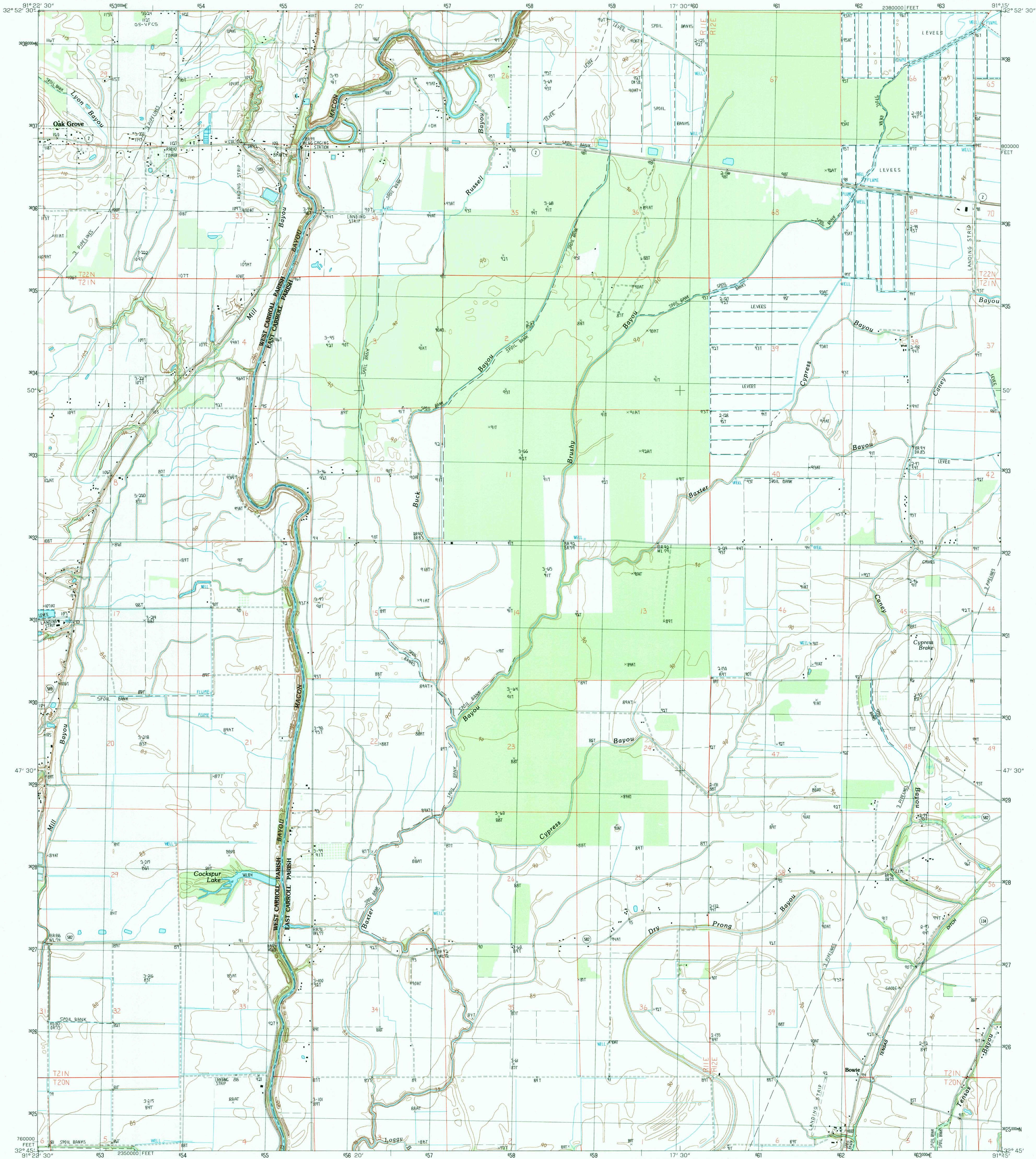


UNITED STATES
DEPARTMENT OF THE INTERIOR
GEOLOGICAL SURVEY

BAXTER BAYOU QUADRANGLE
LOUISIANA
7.5 MINUTE SERIES (TOPOGRAPHIC)



PRODUCED BY THE UNITED STATES GEOLOGICAL SURVEY
CONTROL BY ... USGS AND NOS/NOAA
COMPILED FROM AERIAL PHOTOGRAPHS TAKEN ... 1982
FIELD CHECKED ... 1984. MAP EDITED ... 1988
PROJECTION ... LAMBERT CONFORMAL CONIC
GRID: 1000-METER UNIVERSAL TRANSVERSE MERCATOR ... ZONE 15
UTM GRID DECLINATION ... LOUISIANA, NORTH ZONE
1988 MAGNETIC NORTH DECLINATION ... 7°55' EAST
VERTICAL DATUM ... NATIONAL GEODETIC VERTICAL DATUM OF 1929
HORIZONTAL DATUM ... 1927 NORTH AMERICAN DATUM
To place on the predicted North American Datum of 1983,
move the projection lines as shown by dashed corner ticks
(12 meters south and 11 meters east)
There may be private inholdings within the boundaries of any
Federal or State reservations shown on this map
No distinction made between houses, barns, and other buildings

PROVISIONAL MAP
Produced from original
manuscript drawings. Infor-
mation shown as of date of
photography.

SCALE 1:24 000

1 0 1000 2000 3000 4000 5000 6000 7000 8000 9000 10 000
MILES

1 0 1000 2000 3000 4000 5000 6000 7000 8000 9000 10 000
FEET

1 0 1000 2000 3000 4000 5000 6000 7000 8000 9000 10 000
METERS

CONTOUR INTERVAL 5 FEET
CONTROL ELEVATIONS SHOWN TO THE NEAREST 0.1 FOOT
OTHER ELEVATIONS SHOWN TO THE NEAREST FOOT
To convert feet to meters multiply by .3048
To convert meters to feet multiply by 3.2808

THIS MAP COMPLIES WITH NATIONAL MAP ACCURACY STANDARDS
FOR SALE BY U. S. GEOLOGICAL SURVEY
DENVER, COLORADO 80225, OR RESTON, VIRGINIA 22092
AND LOUISIANA DEPARTMENT OF PUBLIC WORKS, BATON ROUGE, LOUISIANA 70804

1	2	3	1 Fluke
4	5	2 Kilbourne	
6	7	3 Milliken	
		4 Oak Grove	
		5 Lake Providence	
		6 Ploner	
		7 Caraway Lake	
		8 Transylvania	

ADJOINING 7.5 QUADRANGLE NAMES

ROAD LEGEND

Improved Road
Unimproved Road
Trail

Interstate Route U. S. Route State Route

BAXTER BAYOU, LOUISIANA
SE/4 OAK GROVE 15' QUADRANGLE
PROVISIONAL EDITION 1988

32091-G3-TF-024

USGS AND NOS/NOAA
JUN 10 1988
RECD FILE COPY