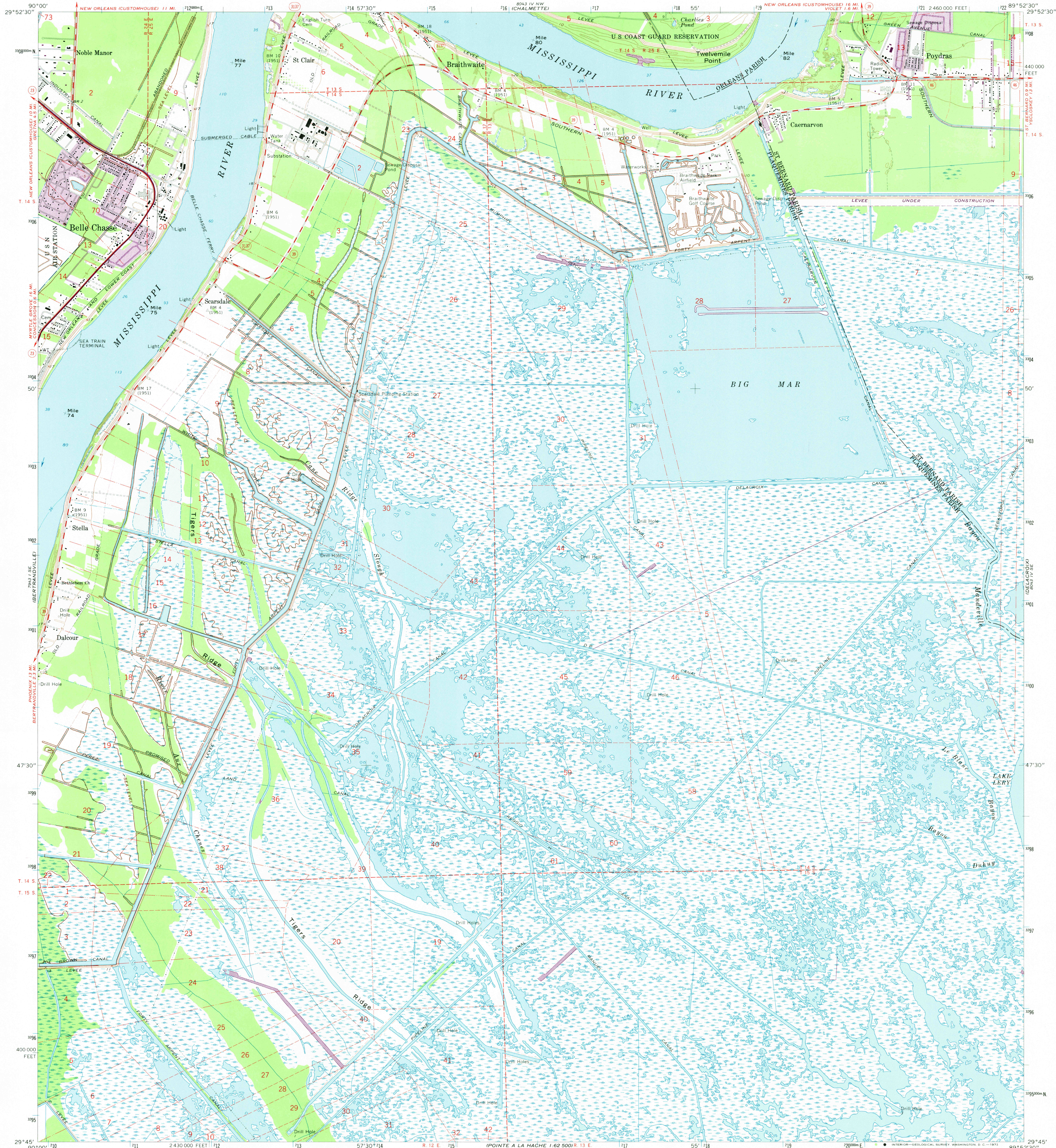


UNITED STATES  
DEPARTMENT OF THE INTERIOR  
GEOLOGICAL SURVEY

BELLE CHASSE QUADRANGLE  
LOUISIANA  
7.5 MINUTE SERIES (TOPOGRAPHIC)  
SW/4 ST. BERNARD 15' QUADRANGLE

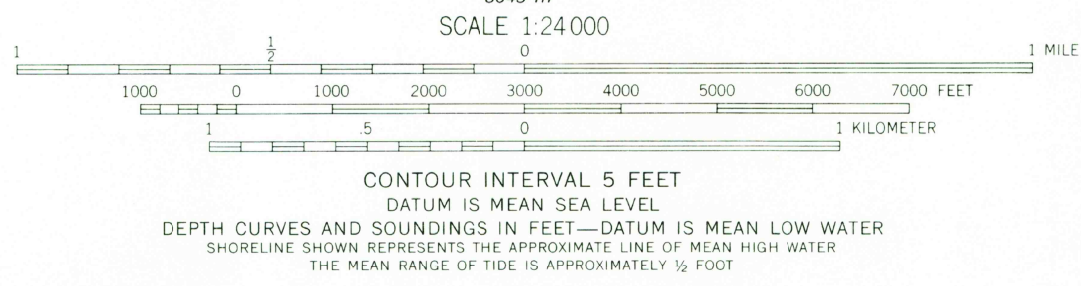
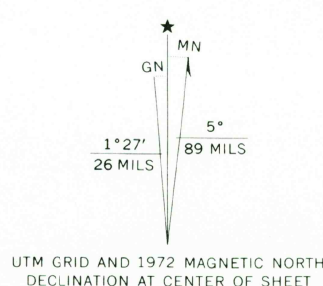


Mapped, edited, and published by the Geological Survey

Control by USGS, USC&GS, and Louisiana Geodetic Survey  
Planimetry by photogrammetric methods from aerial photographs taken 1965  
Topography by planimetric surveys 1966. Supersedes map dated 1938-51  
Selected hydrographic data compiled from USC&GS Chart 1271 (1966)  
This information is not intended for navigational purposes

Polyconic projection. 1927 North American datum  
10,000-foot grid based on Louisiana coordinate system, south zone  
1000-meter Universal Transverse Mercator grid ticks, zone 16, shown in blue

City of New Orleans and Orleans Parish are coextensive  
All or part of this quadrangle lies within a subsidence area  
Bench marks have been adjusted to 1964 leveling unless  
otherwise indicated by parenthetical dates  
Where omitted, land lines have not been established  
Fine red dashed lines indicate selected fence and field lines where  
generally visible on aerial photographs. This information is unchecked



THIS MAP COMPLIES WITH NATIONAL MAP ACCURACY STANDARDS  
FOR SALE BY U.S. GEOLOGICAL SURVEY, DENVER, COLORADO 80225, OR WASHINGTON, D. C. 20242  
AND BY THE STATE OF LOUISIANA, DEPARTMENT OF PUBLIC WORKS, BATON ROUGE, LOUISIANA 70804  
A FOLDER DESCRIBING TOPOGRAPHIC MAPS AND SYMBOLS IS AVAILABLE ON REQUEST

Revisions shown in purple compiled from aerial photographs  
taken 1972. This information not field checked  
Purple tint indicates extension of urban areas



USGS  
HISTORICAL FILE  
TOPOGRAPHIC DIVISION

BELLE CHASSE, LA.  
SW/4 ST. BERNARD 15' QUADRANGLE  
N2945—W8952.5/7.5

1966  
PHOTOREVISED 1972  
AMS 8043 IV SW—SERIES V885

NOV 5 1973

30 plan