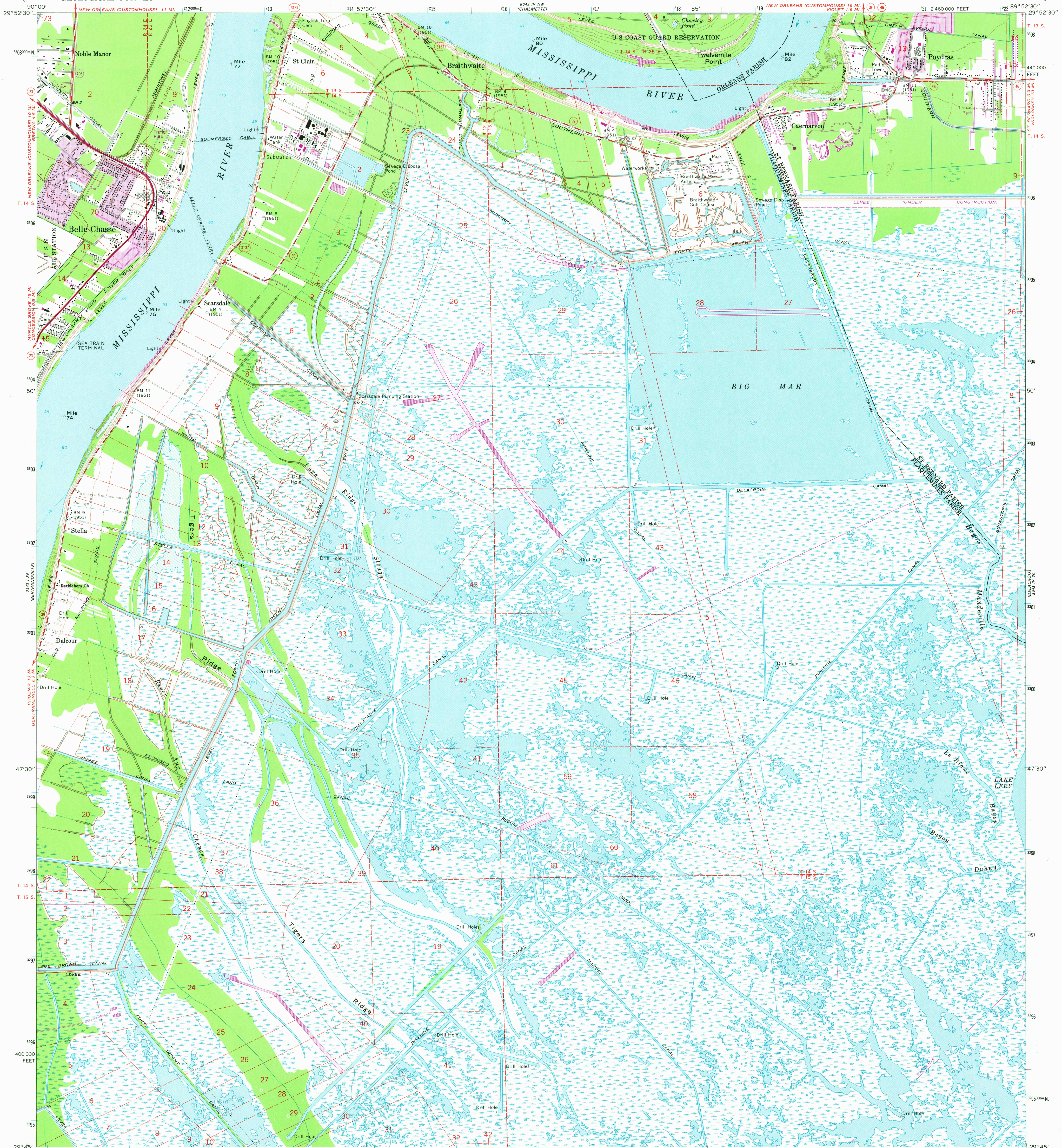


UNITED STATES
DEPARTMENT OF THE INTERIOR
GEOLOGICAL SURVEY

BELLE CHASSE QUADRANGLE
LOUISIANA
7.5 MINUTE SERIES (TOPOGRAPHIC)
SW/4 ST. BERNARD 15' QUADRANGLE



Mapped, edited, and published by the Geological Survey
Control by USGS, USC&GS, and Louisiana Geodetic Survey
Planimetry by photogrammetric methods from aerial photographs taken 1965
Topography by planetable surveys 1966. Supersedes map dated 1938-51
Selected hydrographic data compiled from USC&GS Chart 1271 (1966)
This information is not intended for navigational purposes
Polyconic projection. 1927 North American datum
10,000-foot grid based on Louisiana coordinate system, south zone
1000-meter Universal Transverse Mercator grid ticks, zone 16, shown in blue
To place on the predicted North American Datum 1983
move the projection lines 19 meters south and
7 meters east as shown by dashed corner ticks
City of New Orleans and Orleans Parish are coextensive
All or part of this quadrangle lies within a subsidence area
Bench marks have been adjusted to 1964 releveling unless
otherwise indicated by parenthetical dates

UTM GRID AND 1979 MAGNETIC NORTH
DECLINATION AT CENTER OF SHEET

1"=28'
26 MILS

4"
71 MILS

SCALE 1:24,000

1 1000 0 1000 2000 3000 4000 5000 6000 7000 FEET

1 5 0 1 KILOMETER

CONTOUR INTERVAL 5 FEET
NATIONAL GEODETIC VERTICAL DATUM OF 1929
DEPTH CURVES AND SOUNDINGS IN FEET
GULF COAST LOW WATER DATUM
THE RELATIONSHIP BETWEEN THE TWO DATUMS IS VARIABLE
SHORELINE SHOWN REPRESENTS THE APPROXIMATE LINE OF MEAN HIGH WATER
THE MEAN RANGE OF TIDE IS APPROXIMATELY 1/2 FOOT

THIS MAP COMPLIES WITH NATIONAL MAP ACCURACY STANDARDS
FOR SALE BY U. S. GEOLOGICAL SURVEY, DENVER, COLORADO 80225, OR RESTON, VIRGINIA 22092
AND STATE OF LOUISIANA, DEPARTMENT OF PUBLIC WORKS, BATON ROUGE, LOUISIANA 70804
A FOLDER DESCRIBING TOPOGRAPHIC MAPS AND SYMBOLS IS AVAILABLE ON REQUEST

ROAD CLASSIFICATION

Heavy-duty ——— Light-duty ———
Medium-duty ——— Unimproved dirt ———
State Route ———

USGS
Historical File
Topographic Division

BELLE CHASSE, LA.
SW/4 ST. BERNARD 15' QUADRANGLE
N2945—W8952.5/7.5

1966
PHOTOREVISED 1972 AND 1979
DMA 8043 IV SW—SERIES V885

JUL 28 1980

Revisions shown in purple and woodland compiled
from aerial photographs taken 1972 and 1978. Map
edited 1979. This information not field checked
Purple tint indicates extension of urban area