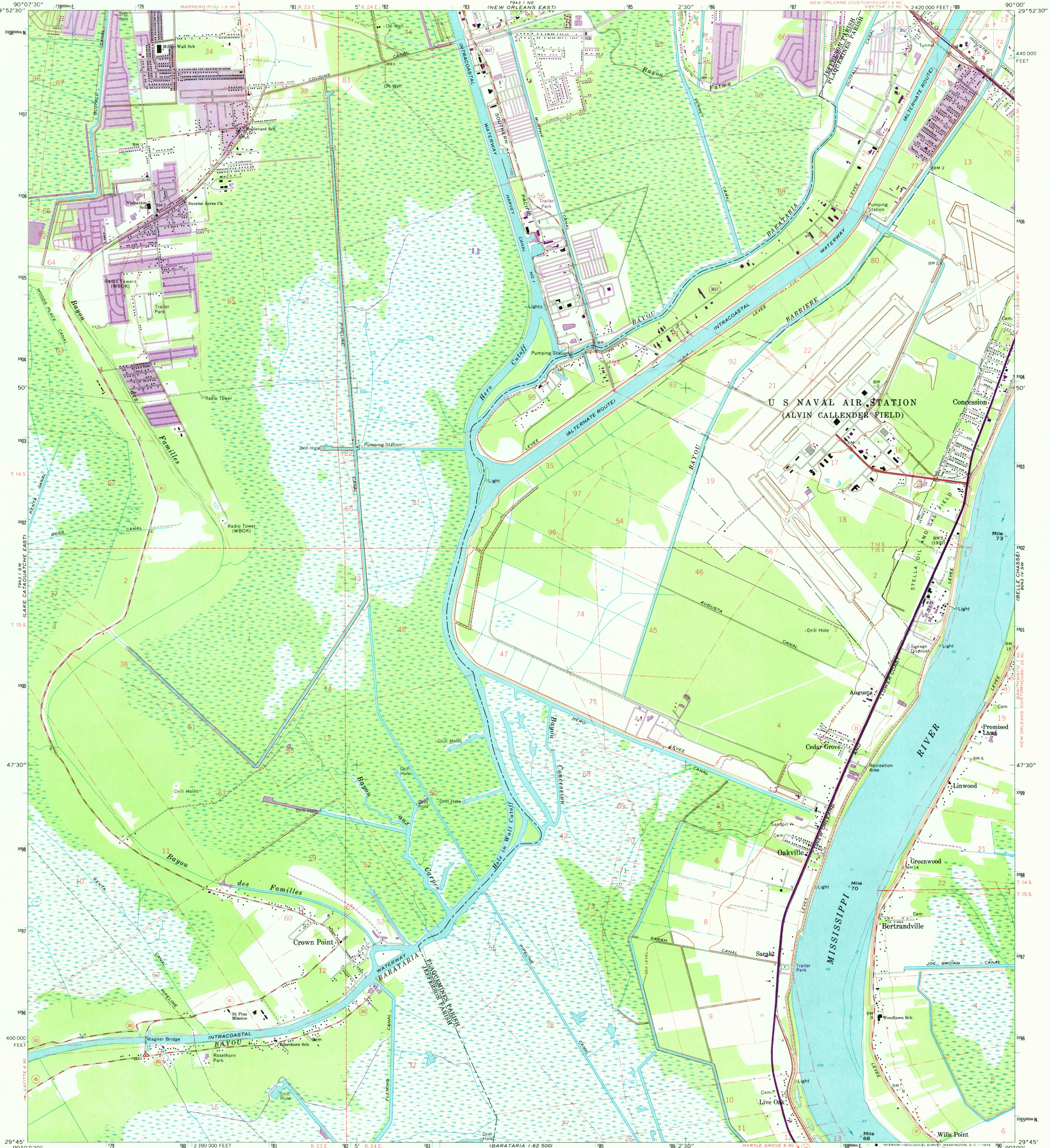
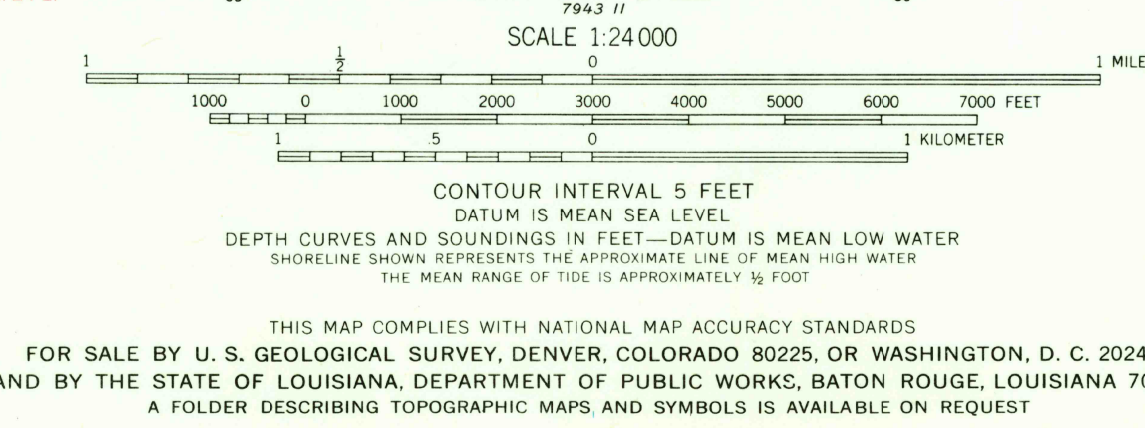
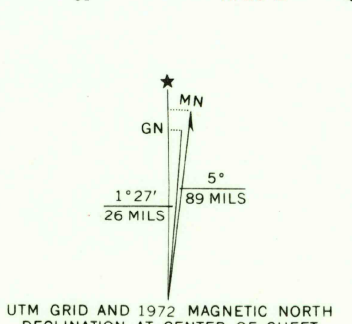


UNITED STATES
DEPARTMENT OF THE INTERIOR
GEOLOGICAL SURVEY

BERTRANDVILLE QUADRANGLE
LOUISIANA
7.5 MINUTE SERIES (TOPOGRAPHIC)
SE/4 NEW ORLEANS 15' QUADRANGLE



Mapped, edited, and published by the Geological Survey
Control by USGS and USC&GS
Planimetry by photogrammetric methods from aerial photographs
taken 1964. Topography by planimetric surveys 1966
Supersedes map dated 1951
Selected hydrographic data compiled from USC&GS Charts 1271 (1966) and
879 (1966). This information is not intended for navigational purposes
Polyconic projection. 1927 North American datum
10,000-foot grid based on Louisiana coordinate system, south zone
1000-meter Universal Transverse Mercator grid ticks, zone 15, shown in blue
All or part of this quadrangle lies within a subsidence area
Bench marks have been adjusted to 1964 leveling unless
otherwise indicated by parenthetical dates
Fine red dashed lines indicate selected fence and field lines where
generally visible on aerial photographs. This information is unchecked



THIS MAP COMPLIES WITH NATIONAL MAP ACCURACY STANDARDS
FOR SALE BY U.S. GEOLOGICAL SURVEY, DENVER, COLORADO 80225, OR WASHINGTON, D. C. 20242
AND BY THE STATE OF LOUISIANA, DEPARTMENT OF PUBLIC WORKS, BATON ROUGE, LOUISIANA 70804
A FOLDER DESCRIBING TOPOGRAPHIC MAPS AND SYMBOLS IS AVAILABLE ON REQUEST
Revisions shown in purple compiled from aerial photographs
taken 1972. This information not field checked
ROAD CLASSIFICATION
Heavy-duty ——— Light-duty ———
Medium-duty ——— Unimproved dirt ———
State Route ———
QUADRANGLE LOCATION
LOUISIANA
BERTRANDVILLE, LA.
SE/4 NEW ORLEANS 15' QUADRANGLE
N 2945—W 9000/7.5
1966
PHOTOREVISED 1972
AMS 7943 1 SE—SERIES V885