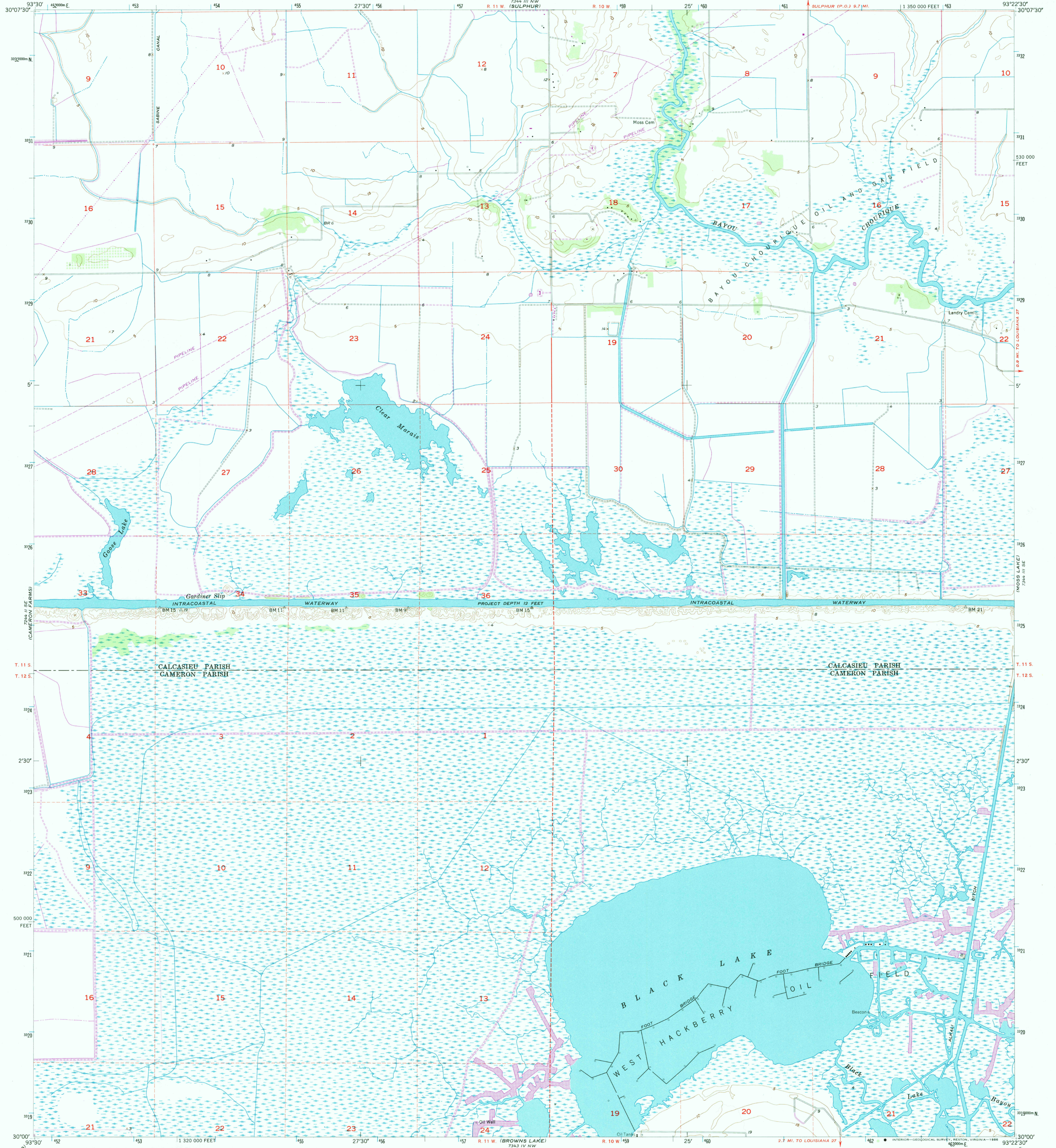


2344 III NW  
7343 IV NW

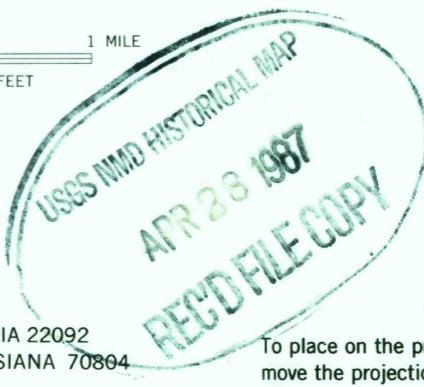
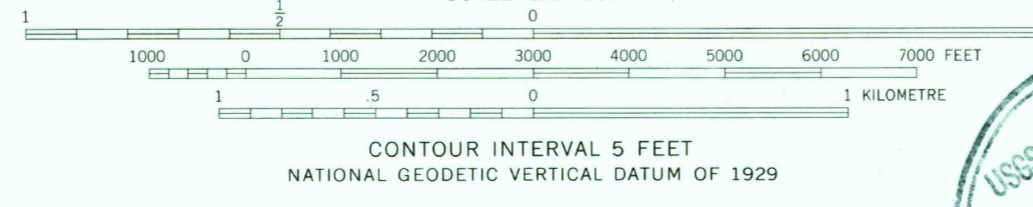
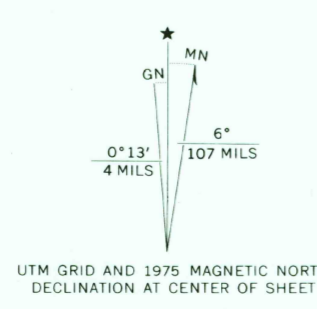
UNITED STATES  
DEPARTMENT OF THE INTERIOR  
GEOLOGICAL SURVEY

BLACK LAKE QUADRANGLE  
LOUISIANA  
7.5 MINUTE SERIES (TOPOGRAPHIC)  
SW/4 SULPHUR 15' QUADRANGLE

2344 III NW  
7343 IV NW



Mapped, edited, and published by the Geological Survey  
Control by USGS, USC&GS, and USCE  
Culture and drainage in part compiled from aerial photographs  
taken 1951. Topography by planetable surveys 1952-1953 and 1955  
Polyconic projection. 1927 North American datum  
10,000-foot grid based on Louisiana coordinate system,  
south zone  
Dashed land lines indicate approximate locations  
Certain land lines unsurveyed in T. 11 S.-R. 10 W.  
and T. 12 S.-R. 10 W.  
1000-metre Universal Transverse Mercator grid ticks,  
zone 15, shown in blue  
Revisions shown in purple compiled from aerial photographs  
taken 1975. This information not field checked



ROAD CLASSIFICATION  
Light-duty ————— Unimproved dirt = - - - - -

THIS MAP COMPLIES WITH NATIONAL MAP ACCURACY STANDARDS  
FOR SALE BY U. S. GEOLOGICAL SURVEY, DENVER, COLORADO 80225, OR RESTON, VIRGINIA 22092  
AND BY THE STATE OF LOUISIANA, DEPARTMENT OF PUBLIC WORKS, BATON ROUGE, LOUISIANA 70804  
A FOLDER DESCRIBING TOPOGRAPHIC MAPS AND SYMBOLS IS AVAILABLE ON REQUEST

To place on the predicted North American Datum 1983,  
move the projection lines 19 meters south and  
17 meters east as shown by dashed corner ticks

BLACK LAKE, LA.  
SW/4 SULPHUR 15' QUADRANGLE  
30093-A4-TF-024

1955  
PHOTOREVISED 1975  
DMA 7344 III SW-SERIES V885