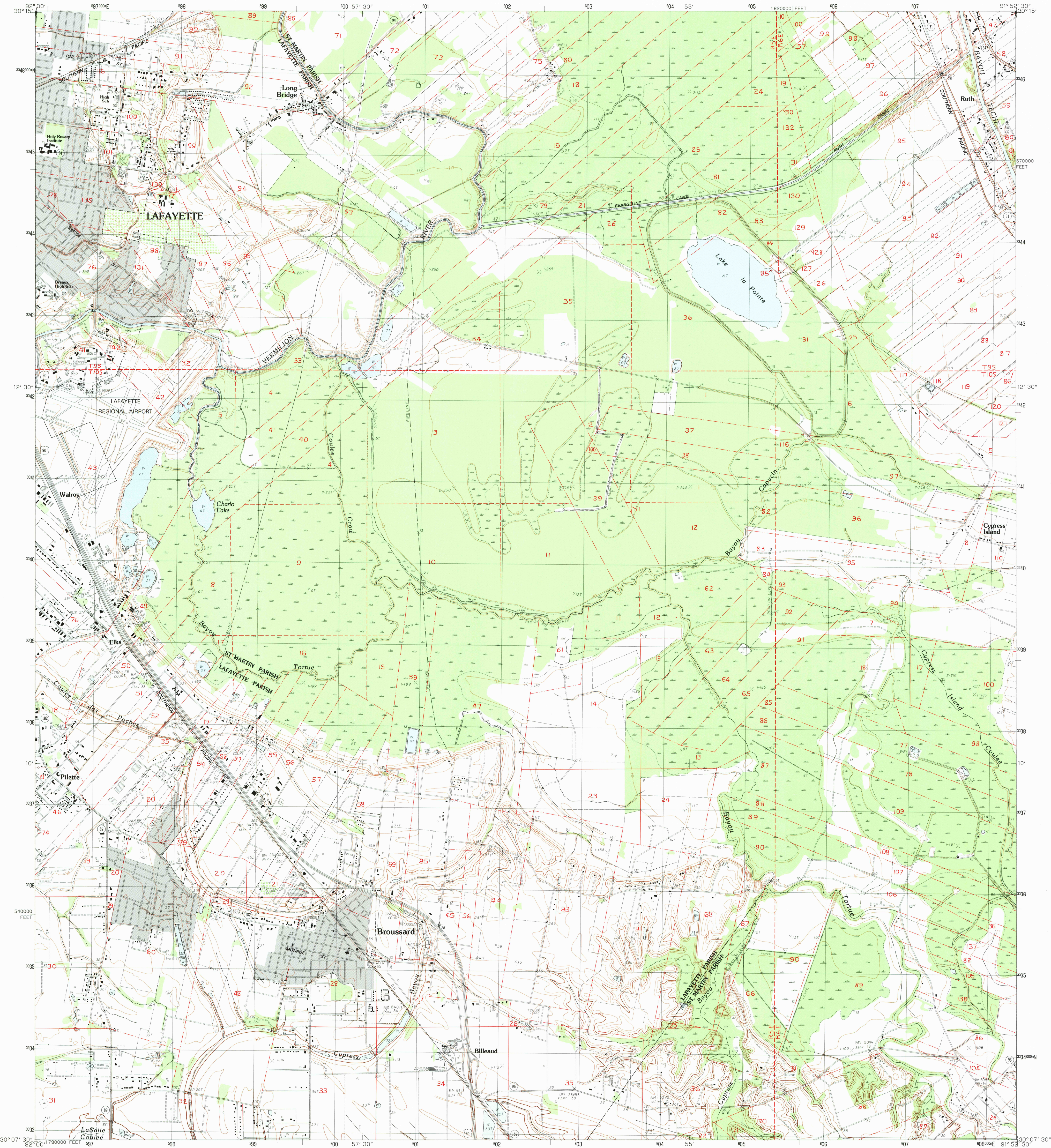


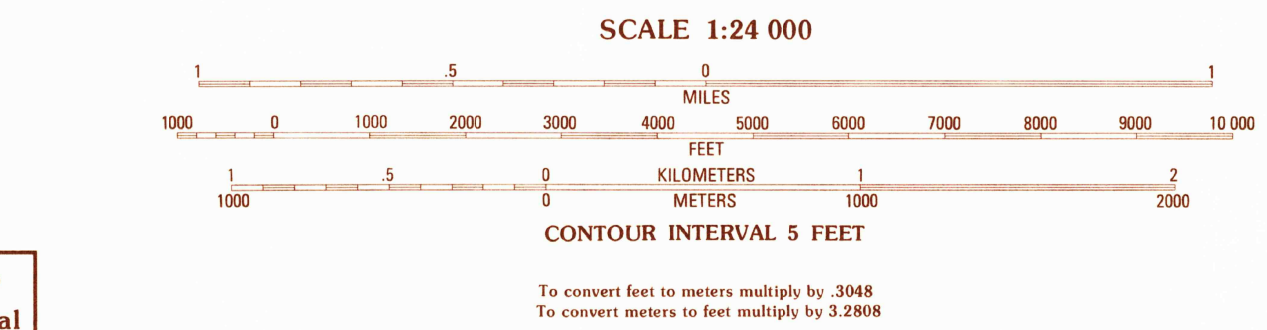
UNITED STATES
DEPARTMENT OF THE INTERIOR
GEOLOGICAL SURVEY

BROUSSARD QUADRANGLE
LOUISIANA
7.5 MINUTE SERIES (TOPOGRAPHIC)



PRODUCED BY THE UNITED STATES GEOLOGICAL SURVEY
CONTROL BY USGS, NOS/NOAA AND LOUISIANA DEPARTMENT OF HIGHWAYS
COMPILED FROM AERIAL PHOTOGRAPHS TAKEN 1976 AND 1980
FIELD CHECKED 1982 MAP EDITED 1983
PROJECTION LAMBERT CONFORMAL CONIC
GRID: 1000-METER UNIVERSAL TRANSVERSE MERCATOR ZONE 15
10,000-FOOT STATE GRID TICKS LOUISIANA SOUTH ZONE
UTM GRID DECLINATION 0°32' EAST
1983 MAGNETIC NORTH DECLINATION 4°30' EAST
VERTICAL DATUM NATIONAL GEODETIC VERTICAL DATUM OF 1929
HORIZONTAL DATUM 1927 NORTH AMERICAN DATUM
To place on the predicted North American Datum of 1983
move the projection lines as shown by dashed corner ticks
(18 meters south and 12 meters east)
There may be private inholdings within the boundaries of any
Federal and State reservations shown on this map
Gray tint indicates area in which selected buildings are shown

PROVISIONAL MAP
Produced from original
manuscript drawings. Infor-
mation shown as of date of
field check.



THIS MAP COMPLIES WITH NATIONAL MAP ACCURACY STANDARDS
FOR SALE BY U.S. GEOLOGICAL SURVEY, DENVER, COLORADO 80225, OR RESTON, VIRGINIA 22092
AND THE STATE OF LOUISIANA, DEPARTMENT OF PUBLIC WORKS, BATON ROUGE, LOUISIANA 70804

ROAD LEGEND

Improved Road
Unimproved Road
Trail

Interstate Route U. S. Route State Route

QUADRANGLE LOCATION

LOUISIANA

1	2	3	4	5	6	7	8
1	2	3	4	5	6	7	8

ADJOINING 7.5' QUADRANGLE NAMES

1 Carencro
2 Breau Bridge
3 Cecilia
4 Lafayette
5 Parks
6 Milton
7 Youngville
8 New Iberia North

BROUSSARD, LOUISIANA
NW 4 ST MARTINVILLE 15' QUADRANGLE
PROVISIONAL EDITION 1983

30091-B8-TF-024

RECEIVED COPY
1984
USGS MAP HISTORICAL MAP