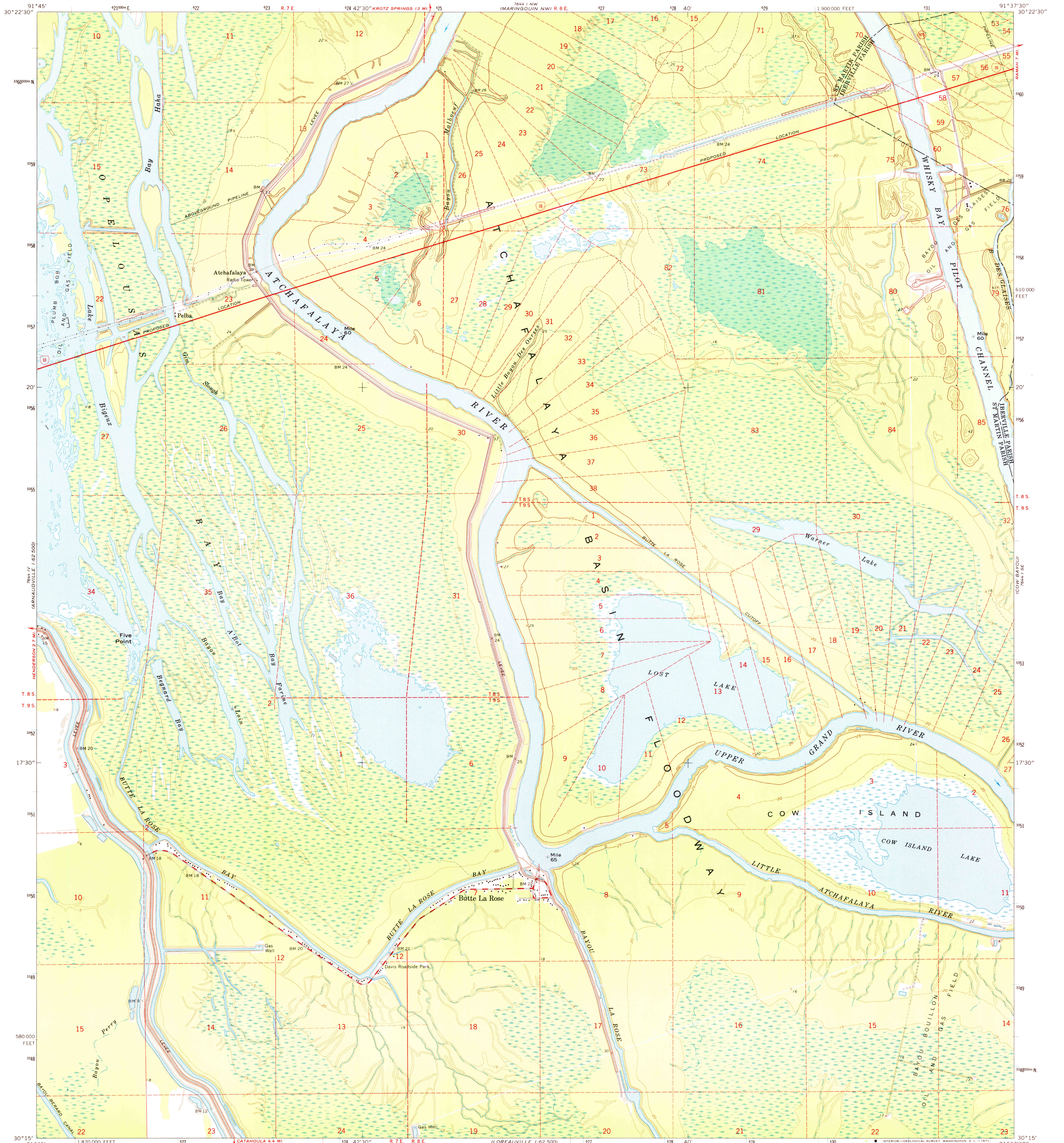
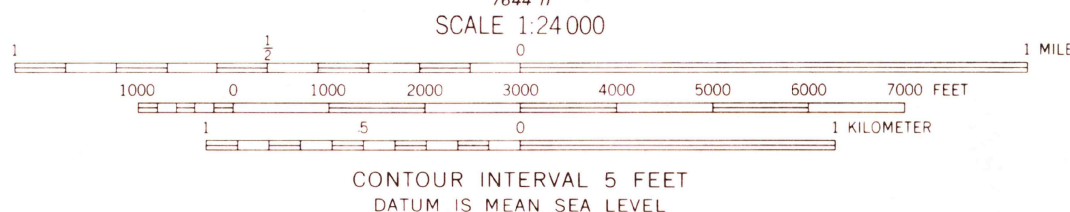
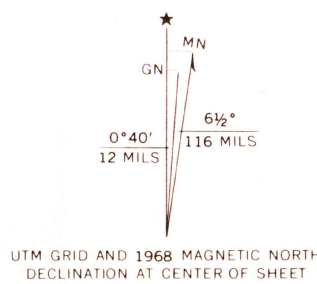


UNITED STATES
DEPARTMENT OF THE INTERIOR
GEOLOGICAL SURVEY

BUTTE LA ROSE QUADRANGLE
LOUISIANA
7.5 MINUTE SERIES (TOPOGRAPHIC)
SW/4 MARINGOUIN 15' QUADRANGLE



Mapped, edited, and published by the Geological Survey
Control by USGS and USC&GS
Planimetry by photogrammetric methods from aerial photographs
taken 1966. Topography by planetable surveys 1967-68
Polyconic projection. 1927 North American datum
10,000-foot grid based on Louisiana coordinate system, south zone
1000-meter Universal Transverse Mercator grid ticks,
zone 15, shown in blue
Fine red dashed lines indicate selected fence and field lines where
generally visible on aerial photographs. This information is unchecked



THIS MAP COMPLIES WITH NATIONAL MAP ACCURACY STANDARDS
FOR SALE BY U. S. GEOLOGICAL SURVEY, DENVER, COLORADO 80225, OR WASHINGTON, D. C. 20242
AND BY THE STATE OF LOUISIANA, DEPARTMENT OF PUBLIC WORKS, BATON ROUGE, LOUISIANA 70804
A FOLDER DESCRIBING TOPOGRAPHIC MAPS AND SYMBOLS IS AVAILABLE ON REQUEST

ROAD CLASSIFICATION
Heavy-duty ——— Light-duty ———
Medium-duty ——— Unimproved dirt ———
Interstate Route ———



Topographic Division
Historical File

OCT 10 1973
BUTTE LA ROSE, LA.
SW/4 MARINGOUIN 15' QUADRANGLE
N3015—W9137.5/7.5
1968
AMS 7644 I SW—SERIES V885