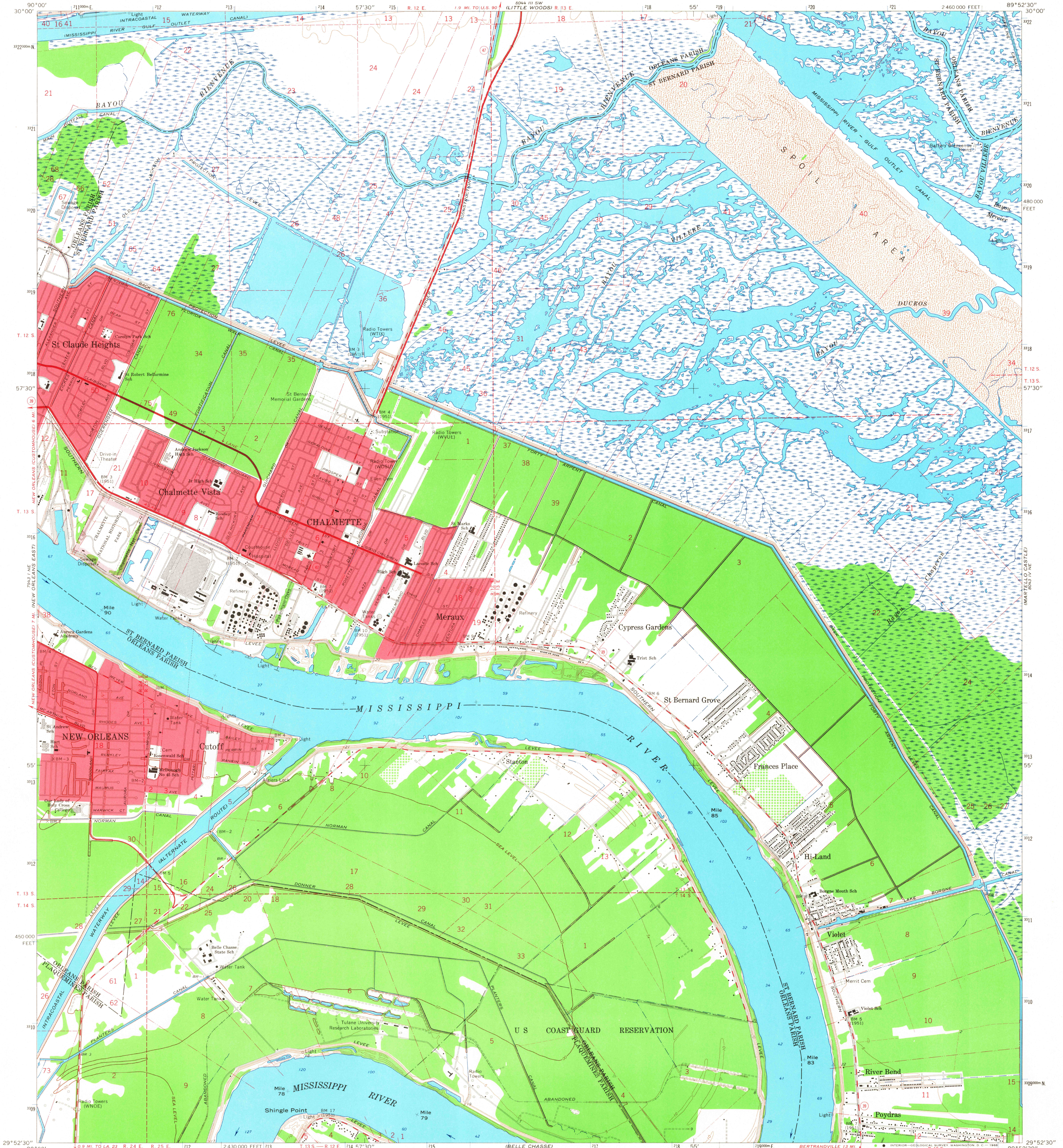
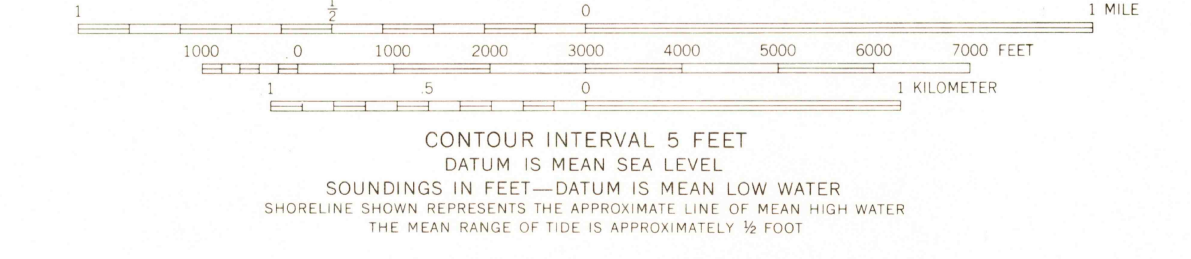
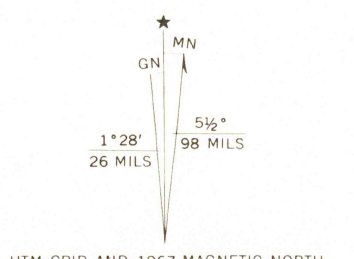


UNITED STATES  
DEPARTMENT OF THE INTERIOR  
GEOLOGICAL SURVEY

CHALMETTE QUADRANGLE  
LOUISIANA  
7.5 MINUTE SERIES (TOPOGRAPHIC)  
NW/4 ST. BERNARD 15 QUADRANGLE



Mapped, edited, and published by the Geological Survey  
Control by USGS, USC&GS, and Louisiana Geodetic Survey  
Planimetry by photogrammetric methods from aerial photographs taken 1964  
Topography by planimeter surveys 1967. Supersedes map dated 1936-51  
Selected hydrographic data compiled from USC&GS Chart 1271 (1966)  
This information is not intended for navigational purposes  
Polyconic projection. 1927 North American datum  
10,000-foot grid based on Louisiana coordinate system, south zone  
1000-meter Universal Transverse Mercator grid ticks,  
zone 16, shown in blue  
Red tint indicates areas in which only landmark buildings are shown  
City of New Orleans and Orleans Parish are coextensive  
All or part of this quadrangle lies within a subsidence area  
Bench marks have been adjusted to 1964 leveling unless otherwise  
indicated by parenthetical dates  
Fine red dashed lines indicate selected fence and field lines where  
generally visible on aerial photographs. This information is unchanged



CONTOUR INTERVAL 5 FEET  
DATUM IS MEAN SEA LEVEL  
SOUNDINGS IN FEET—DATUM IS MEAN LOW WATER  
SHORELINE SHOWN REPRESENTS THE APPROXIMATE LINE OF MEAN HIGH WATER  
THE MEAN RANGE OF TIDE IS APPROXIMATELY 19 FEET

THIS MAP COMPLIES WITH NATIONAL MAP ACCURACY STANDARDS  
FOR SALE BY U. S. GEOLOGICAL SURVEY, DENVER, COLORADO 80225, OR WASHINGTON, D. C. 20242  
AND BY THE STATE OF LOUISIANA, DEPARTMENT OF PUBLIC WORKS, BATON ROUGE, LOUISIANA 70804  
A FOLDER DESCRIBING TOPOGRAPHIC MAPS AND SYMBOLS IS AVAILABLE ON REQUEST

USGS  
Historical Files  
Topographic Division

ROAD CLASSIFICATION  
Heavy-duty ——— Light-duty ———  
Medium-duty ——— Unimproved dirt ———  
○ State Route



U.S.G.S.  
FIVE COPY  
TOPOGRAPHIC DIVISION

CHALMETTE, LA.  
NW/4 ST. BERNARD 15 QUADRANGLE  
N2952.5—W8952.5/7.5  
1967  
AMS 8043 IV NW—SERIES V885

2545  
JUL 22 1968