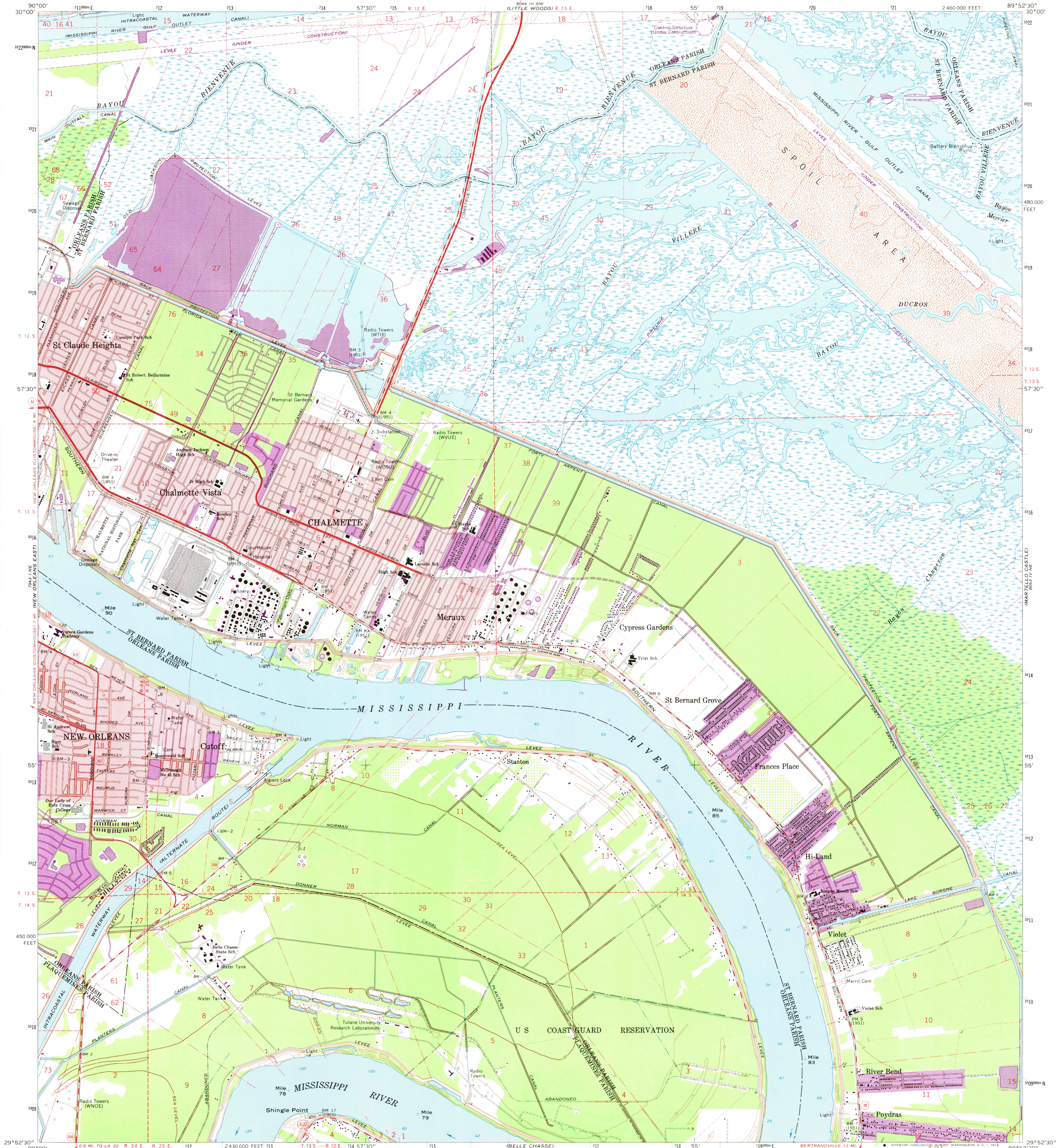
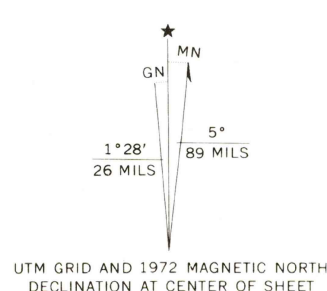


UNITED STATES
DEPARTMENT OF THE INTERIOR
GEOLOGICAL SURVEY

CHALMETTE QUADRANGLE
LOUISIANA
7.5 MINUTE SERIES (TOPOGRAPHIC)
NW/4 ST. BERNARD 15' QUADRANGLE



Mapped, edited, and published by the Geological Survey
Control by USGS, USC&GS, and Louisiana Geodetic Survey
Planimetry by photogrammetric methods from aerial photographs taken 1964
Topography by planimetric surveys 1967. Supersedes map dated 1936-51
Selected hydrographic data compiled from USC&GS Chart 1271 (1966)
This information is not intended for navigational purposes
Polyconic projection. 1927 North American datum
10,000-foot grid based on Louisiana coordinate system, south zone
1000-meter Universal Transverse Mercator grid ticks,
zone 16, shown in blue
Red tint indicates areas in which only landmark buildings are shown
City of New Orleans and Orleans Parish are coextensive
All or part of this quadrangle lies within a subsidence area
Bench marks have been adjusted to 1964 leveling unless otherwise
indicated by parenthetical dates
Fine red dashed lines indicate selected fence and field lines where
generally visible on aerial photographs. This information is unchecked



CONTOUR INTERVAL 5 FEET
DATUM IS MEAN SEA LEVEL
SOUNDINGS IN FEET—DATUM IS MEAN LOW WATER
SHORELINE SHOWN REPRESENTS THE APPROXIMATE LINE OF MEAN HIGH WATER
THE MEAN RANGE OF TIDE IS APPROXIMATELY 1/2 FOOT
FOR SALE BY U. S. GEOLOGICAL SURVEY, DENVER, COLORADO 80225, OR WASHINGTON, D. C. 20242
AND BY THE STATE OF LOUISIANA, DEPARTMENT OF PUBLIC WORKS, BATON ROUGE, LOUISIANA 70804
A FOLDER DESCRIBING TOPOGRAPHIC MAPS AND SYMBOLS IS AVAILABLE ON REQUEST



ROAD CLASSIFICATION
Heavy-duty ——— Light-duty ———
Medium-duty ——— Unimproved dirt ———
State Route

USGS
Historical File
Topographic Division

NOV 13 1973
CHALMETTE, LA.
NW/4 ST. BERNARD 15' QUADRANGLE
N2952.5-W8952.5/7.5
1967
PHOTOREVISED 1972
AMS 8043 IV NW—SERIES V885

Revisions shown in purple compiled from aerial photographs
taken 1972. This information not field checked
Purple tint indicates extension of urban areas