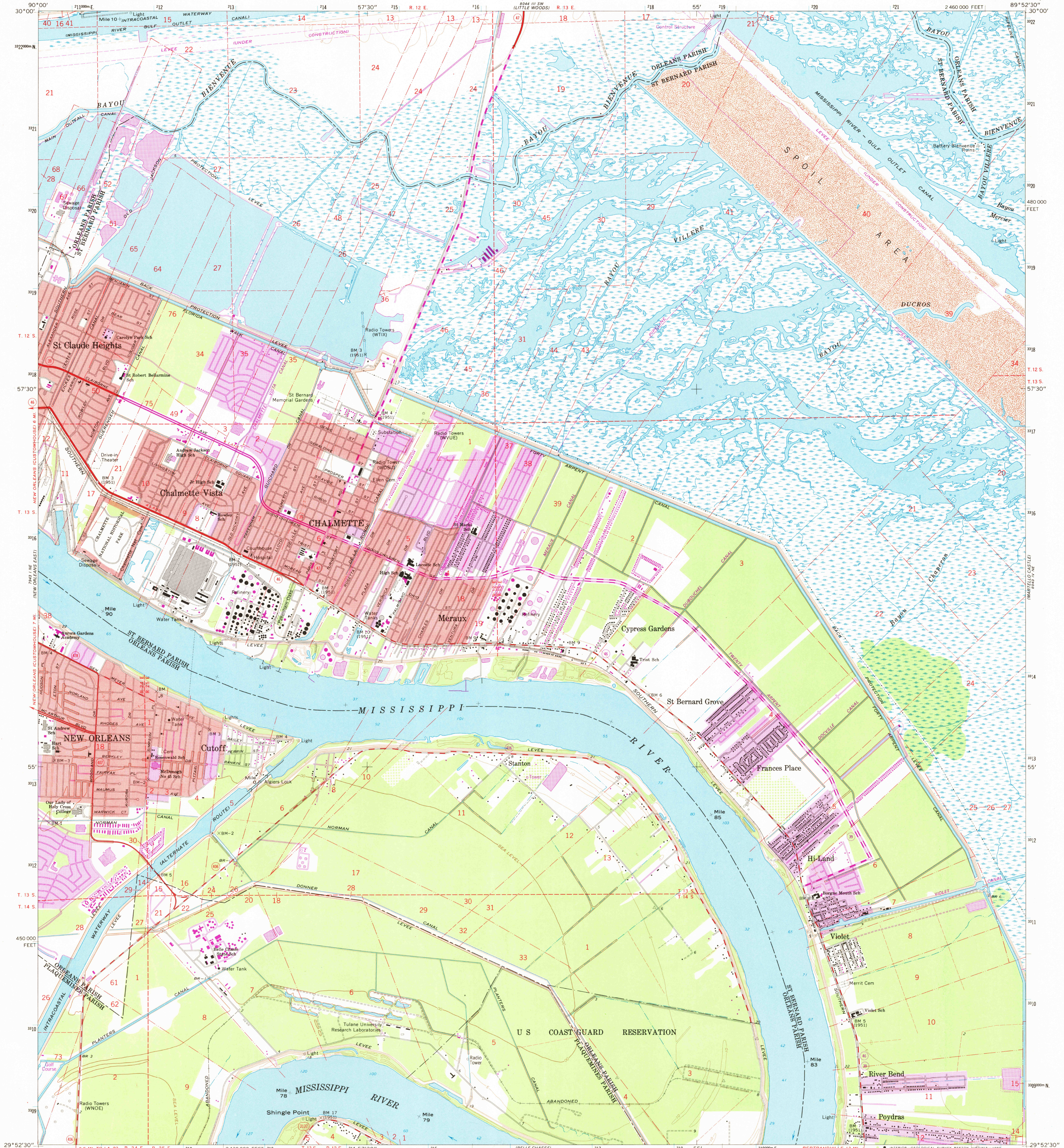


UNITED STATES  
DEPARTMENT OF THE INTERIOR  
GEOLOGICAL SURVEY

CHALMETTE QUADRANGLE  
LOUISIANA  
7.5 MINUTE SERIES (TOPOGRAPHIC)  
NW/4 ST. BERNARD 15' QUADRANGLE



Mapped, edited, and published by the Geological Survey  
Control by USGS, USC&GS, and Louisiana Geodetic Survey  
Planimetry by photogrammetric methods from aerial photographs taken 1964  
Topography by plane-table surveys 1967. Supersedes map dated 1936-51  
Selected hydrographic data compiled from USC&GS Chart 1271 (1966)  
This information is not intended for navigational purposes  
Polyconic projection. 1927 North American datum  
10,000-foot grid based on Louisiana coordinate system, south zone  
1000-meter Universal Transverse Mercator grid ticks,  
zone 16, shown in blue  
Red tint indicates areas in which only landmark buildings are shown  
City of New Orleans and Orleans Parish are coextensive  
All or part of this quadrangle lies within a subsidence area  
Bench marks have been adjusted to 1964 leveling unless otherwise  
indicated by parenthetical dates  
Fine red dashed lines indicate selected fence and field lines where  
generally visible on aerial photographs. This information is unchecked

UTM GRID and 1979 MAGNETIC NORTH  
DECLINATION at CENTER OF SHEET  
To place on the predicted North American Datum 1983  
move the projection lines 19 meters south and  
7 meters east as shown by dashed corner ticks  
There may be private inholdings within the boundaries of  
the National or State reservations shown on this map

SCALE 1:24,000  
CONTOUR INTERVAL 5 FEET  
NATIONAL GEODETIC VERTICAL DATUM OF 1929  
DEPTH CURVES AND SOUNDINGS IN FEET  
GULF COAST LOW WATER DATUM  
THE RELATIONSHIP BETWEEN THE TWO DATUMS IS VARIABLE  
SHORELINE SHOWN REPRESENTS THE APPROXIMATE LINE OF MEAN HIGH WATER  
THE MEAN RANGE OF TIDE IS APPROXIMATELY 1/4 FOOT  
THIS MAP COMPLETES WITH NATIONAL MAP ACCURACY STANDARDS  
FOR SALE BY U.S. GEOLOGICAL SURVEY, DENVER, COLORADO 80225, OR RESTON, VIRGINIA 22092  
AND STATE OF LOUISIANA, DEPARTMENT OF PUBLIC WORKS, BATON ROUGE, LOUISIANA 70804  
A FOLDER DESCRIBING TOPOGRAPHIC MAPS AND SYMBOLS IS AVAILABLE ON REQUEST

ROAD CLASSIFICATION  
Heavy-duty ——— Light-duty ———  
Medium-duty ——— Unimproved dirt ———  
State Route ———  
USGS  
Historical File  
Topographic Division  
JUL 22 1980  
CHALMETTE, LA.  
NW/4 ST. BERNARD 15' QUADRANGLE  
N2952.5—W8952.5/7.5  
1967  
PHOTOREVISED 1972 AND 1979  
DMA 8043 IV NW—SERIES V885

1700