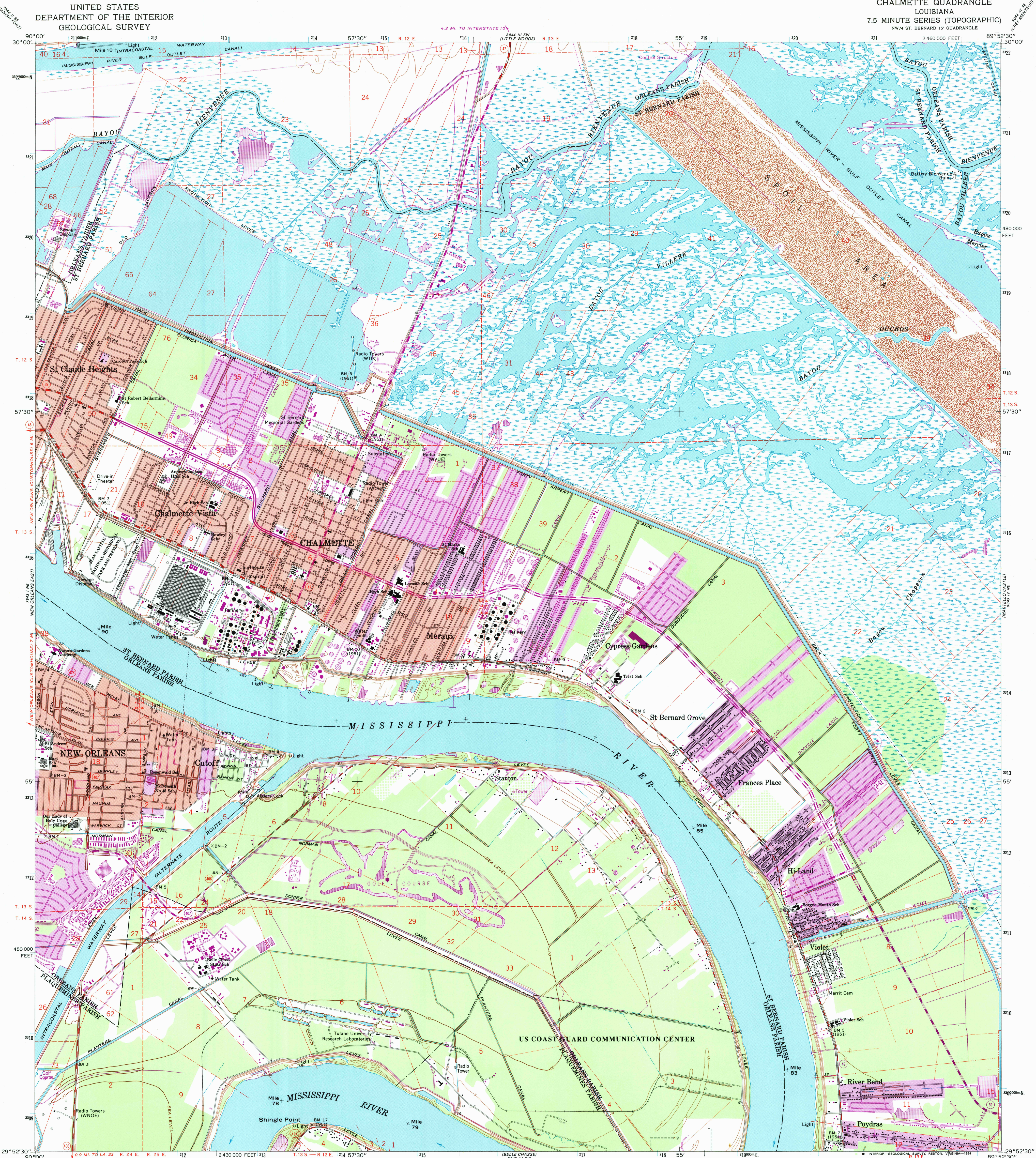
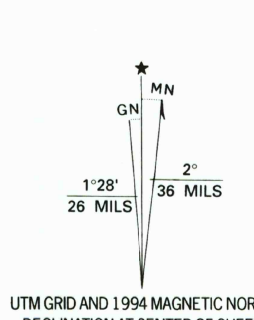


UNITED STATES
DEPARTMENT OF THE INTERIOR
GEOLOGICAL SURVEY

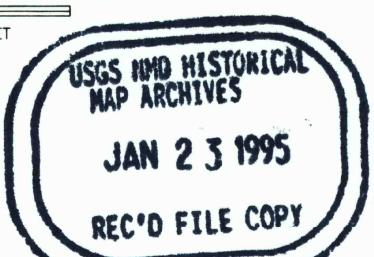
CHALMETTE QUADRANGLE
LOUISIANA
7.5 MINUTE SERIES (TOPOGRAPHIC)
NW/4 ST. BERNARD 15' QUADRANGLE



Produced by the United States Geological Survey
Control by USGS and NOS/NOAA
Planimetry by photogrammetric methods from aerial photographs taken 1964
Topography by planimetric surveys 1967. Supersedes map dated 1936 and 1951
North American Datum of 1927 (NAD 27). Projection and
10 000-foot ticks: Louisiana coordinate system, south zone
(Lambert conformal conic)
Blue 1000-meter Universal Transverse Mercator ticks, zone 16
North American Datum of 1983 (NAD 83) is shown by dashed
corner ticks. The values of the shift between NAD 27 and NAD 83
for 7.5-minute intersections are obtainable from National Geodetic
Survey NADCON software.
There may be private inholdings within the boundaries of
the National or State reservations shown on this map.
Red tint indicates areas in which only landmark buildings are shown.
City of New Orleans and Orleans Parish are coextensive.
Bench marks have been adjusted to 1964 leveling unless otherwise
indicated by parenthetical dates.
This map covers a subsidence area. Evaluate relief and elevation
information based on recent sources.



SCALE 1:24 000
CONTOUR INTERVAL 5 FEET
NATIONAL GEODETIC VERTICAL DATUM OF 1929
THIS MAP COMPLIES WITH NATIONAL MAP ACCURACY STANDARDS
FOR SALE BY U.S. GEOLOGICAL SURVEY, DENVER, COLORADO 80225, OR RESTON, VIRGINIA 22092
AND LOUISIANA DEPARTMENT OF TRANSPORTATION AND DEVELOPMENT, BATON ROUGE, LOUISIANA 70804
A FOLDER DESCRIBING TOPOGRAPHIC MAPS AND SYMBOLS IS AVAILABLE ON REQUEST



ROAD CLASSIFICATION
Primary highway, hard surface
Secondary highway, hard surface
Unimproved road
Light-duty road, hard or improved surface
Unimproved road
Interstate Route
U. S. Route
State Route

CHALMETTE, LA.
NW/4 ST. BERNARD 15' QUADRANGLE
29089-H8-TF-024
1967
REVISED 1994
DMA 8043 IV NW-SERIES V885

Revisions shown in purple compiled in cooperation with
State of Louisiana agencies from aerial photographs
taken 1989 and other sources. This information not
field checked. Map edited 1994
Information shown in purple may not meet USGS content
standards and may conflict with previously mapped contours