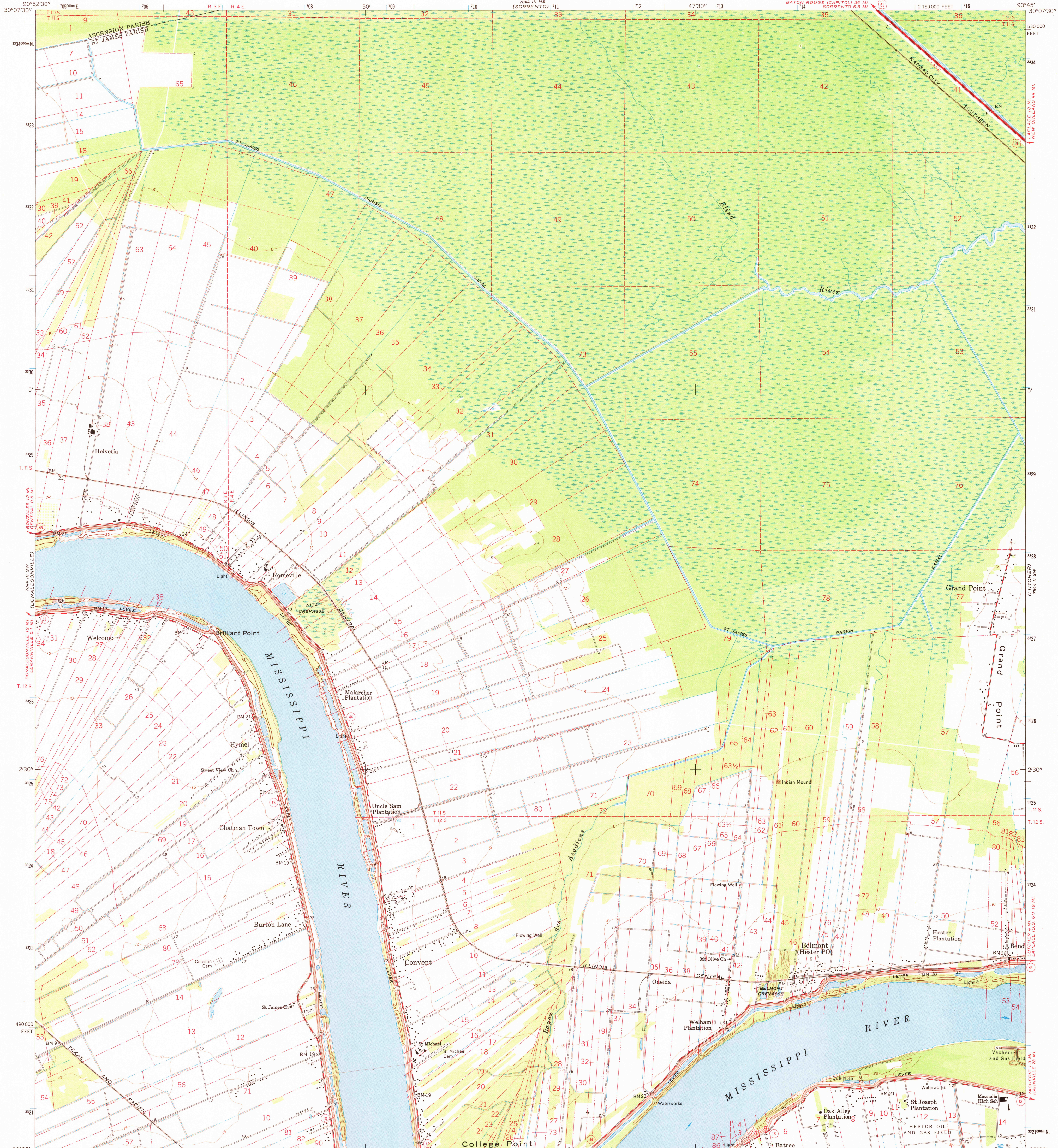
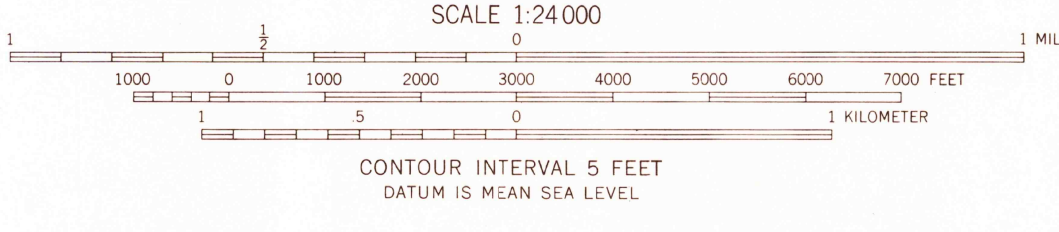
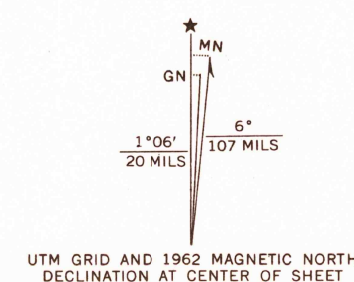


UNITED STATES  
DEPARTMENT OF THE INTERIOR  
GEOLOGICAL SURVEY

CONVENT QUADRANGLE  
LOUISIANA  
7.5 MINUTE SERIES (TOPOGRAPHIC)  
SE 1/4 DONALDSONVILLE 15' QUADRANGLE



Mapped, edited, and published by the Geological Survey  
Control by USGS, USC&GS, USCE, and Louisiana Geodetic Survey  
Planimetry by photogrammetric methods from aerial photographs  
taken 1961. Topography by planetable surveys 1962  
Polyconic projection. 1927 North American datum  
10,000-foot grid based on Louisiana coordinate system, south zone  
1000-meter Universal Transverse Mercator grid ticks,  
zone 15, shown in blue  
Fine red dashed lines indicate selected fence and field lines where  
generally visible on aerial photographs. This information is unchecked



ROAD CLASSIFICATION

Heavy-duty	Light-duty
Medium-duty	Unimproved dirt
U.S. Route	State Route

THIS MAP COMPLIES WITH NATIONAL MAP ACCURACY STANDARDS  
FOR SALE BY U.S. GEOLOGICAL SURVEY, DENVER, COLORADO 80225, OR WASHINGTON, D. C. 20242  
AND BY THE STATE OF LOUISIANA, DEPARTMENT OF PUBLIC WORKS, BATON ROUGE, LOUISIANA 70804  
A FOLDER DESCRIBING TOPOGRAPHIC MAPS AND SYMBOLS IS AVAILABLE ON REQUEST



USGS  
Historical File  
Topographic Division

**U.S.G.S.**  
**FILE COPY**  
**TOPOGRAPHIC DIVISION**

CONVENT, LA.  
SE 1/4 DONALDSONVILLE 15' QUADRANGLE  
N3000-W9045/7.5  
1962  
AMS 7844 III SE-SERIES 7885

3085  
MAY 26 1968