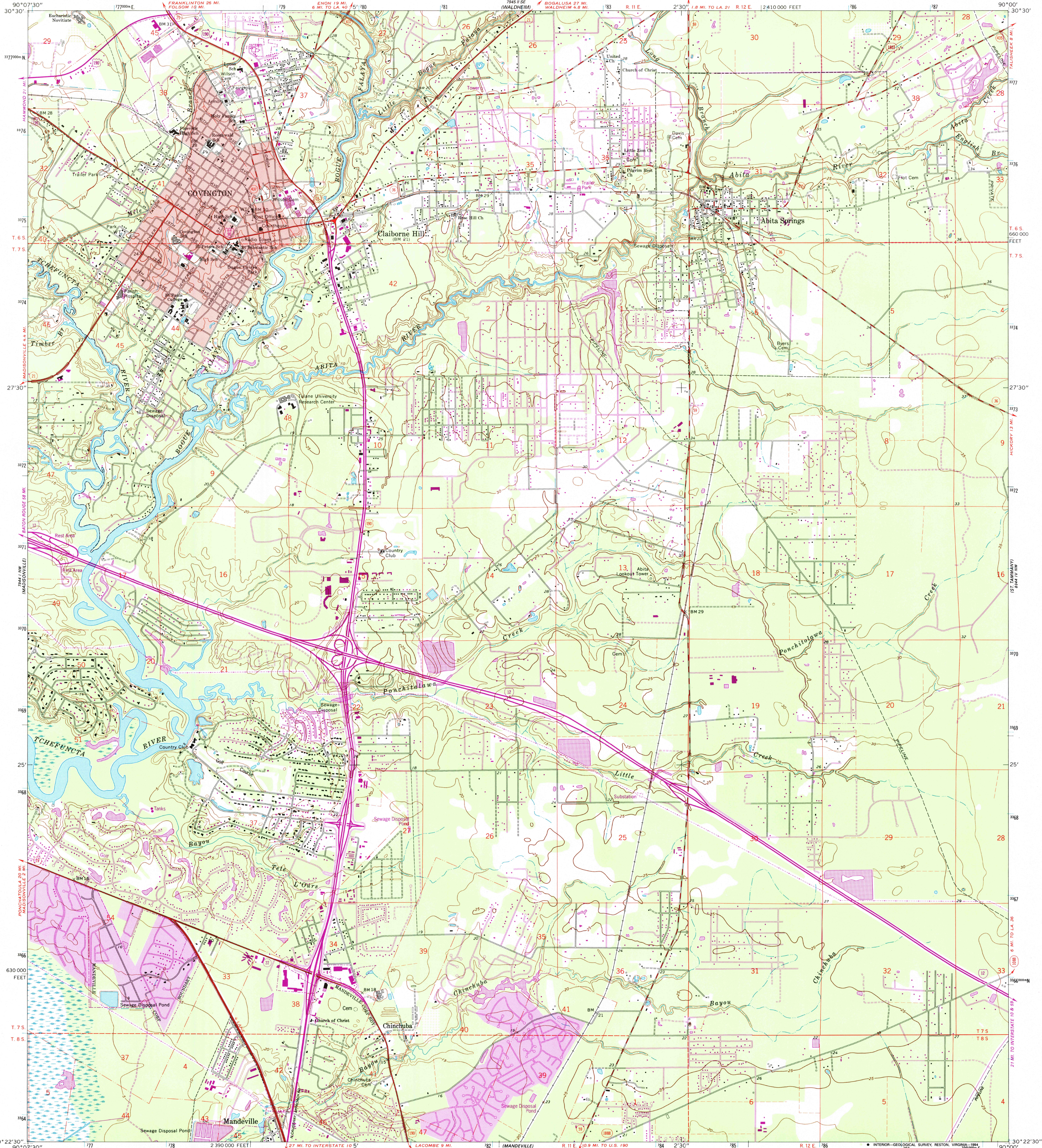
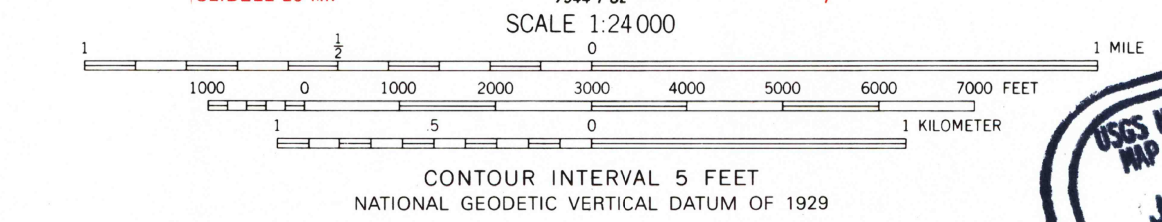
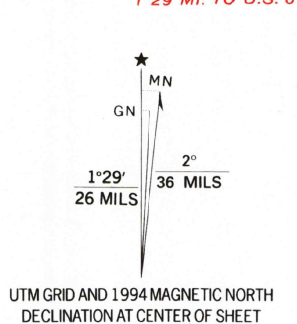


UNITED STATES
DEPARTMENT OF THE INTERIOR
GEOLOGICAL SURVEY

COVINGTON QUADRANGLE
LOUISIANA—ST. TAMMANY PARISH
7.5 MINUTE SERIES (TOPOGRAPHIC)
NE/4 COVINGTON 15' QUADRANGLE



Produced by the United States Geological Survey
Control by USGS and NOS/NOAA
Topography by photogrammetric methods from aerial photographs taken 1965 and planetable surveys 1968
Projection and 10,000-foot grid ticks: Louisiana coordinate system, south zone (Lambert conformal conic)
1000-meter Universal Transverse Mercator grid ticks, zone 15, shown in blue 1927 North American Datum (NAD 27)
North American Datum of 1983 (NAD 83) is shown by dashed corner ticks The values of the shift between NAD 27 and NAD 83 for 7.5-minute intersections are given in USGS Bulletin 1875
Red tint indicates areas in which only landmark buildings are shown
Fine red dashed lines indicate selected fence and field lines where generally visible on aerial photographs. This information is unchecked
This map covers a subsidence area. Evaluate relief and elevation information based on recent sources



USGS AND HISTORICAL
MAP ARCHIVES
JAN 03 1995
REC'D FILE COPY



ROAD CLASSIFICATION
Primary highway, hard surface
Secondary highway, hard surface
Interstate Route
Light-duty road, hard or improved surface
Unimproved road
U. S. Route
State Route

COVINGTON, LA.
NE/4 COVINGTON 15' QUADRANGLE
30090-D1-TF-024
1968
REVISED 1994
DMA 7944 1 NE—SERIES V885

THIS MAP COMPLIES WITH NATIONAL MAP ACCURACY STANDARDS
FOR SALE BY U.S. GEOLOGICAL SURVEY, DENVER, COLORADO 80225, OR RESTON, VIRGINIA 22092
AND LOUISIANA DEPARTMENT OF TRANSPORTATION AND DEVELOPMENT, BATON ROUGE, LOUISIANA 70804
A FOLDER DESCRIBING TOPOGRAPHIC MAPS AND SYMBOLS IS AVAILABLE ON REQUEST

Revisions shown in purple compiled in cooperation with State of Louisiana agencies from aerial photographs taken 1989-90 and other sources. This information not field checked. Map edited 1994
Information shown in purple may not meet USGS content standards and may conflict with previously mapped contours
Purple tint indicates extension of urban areas