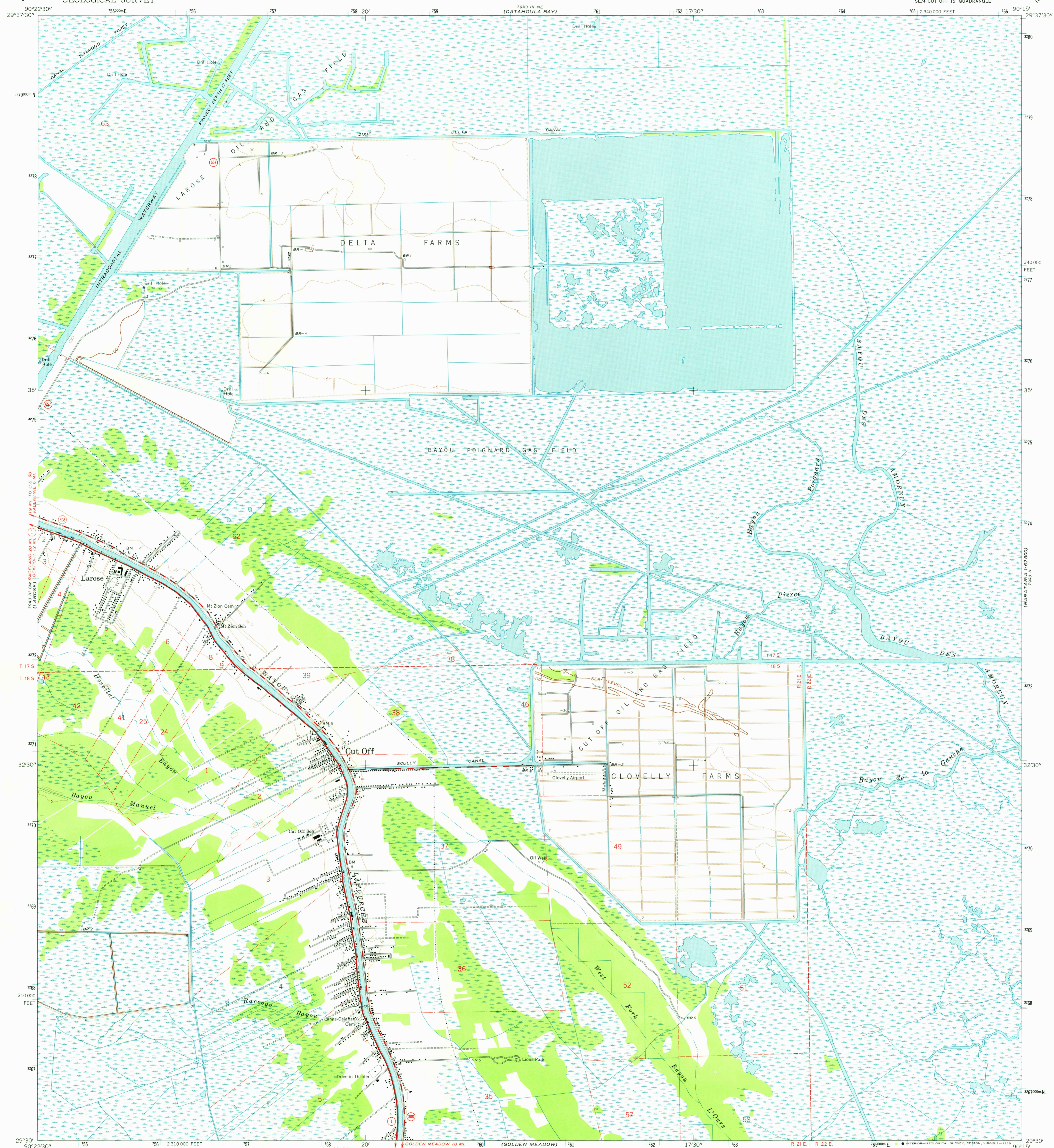


754 III NW  
755 III NW  
756 III NW  
757 III NW  
758 III NW  
759 III NW  
760 III NW  
761 III NW  
762 III NW  
763 III NW  
764 III NW  
765 III NW  
766 III NW

UNITED STATES  
DEPARTMENT OF THE INTERIOR  
GEOLOGICAL SURVEY

CUT OFF QUADRANGLE  
LOUISIANA-LAFOURCHE PARISH  
7.5 MINUTE SERIES (TOPOGRAPHIC)  
SE/4 CUT OFF 15' QUADRANGLE

754 III NW  
755 III NW  
756 III NW  
757 III NW  
758 III NW  
759 III NW  
760 III NW  
761 III NW  
762 III NW  
763 III NW  
764 III NW  
765 III NW  
766 III NW



Maped, edited, and published by the Geological Survey  
in cooperation with State of Louisiana, Department of  
Public Works  
Control by USGS and USC&GS  
Planimetry by photogrammetric methods from aerial photographs  
taken 1962. Topography by planetable surveys 1963  
Polyconic projection. 1927 North American datum  
10,000-foot grid based on Louisiana coordinate system, south zone  
1000-metre Universal Transverse Mercator grid ticks,  
zone 15, shown in blue  
Where omitted, land lines have not been established

UTM GRID AND 1963 MAGNETIC NORTH  
DECLINATION AT CENTER OF SHEET  
1°19' 23 MILS  
6° 107 MILS

SCALE 1:24,000  
CONTOUR INTERVAL 5 FEET  
NATIONAL GEODETIC VERTICAL DATUM OF 1929  
1000 0 1000 2000 3000 4000 5000 6000 7000 FEET  
1 KILOMETRE



ROAD CLASSIFICATION  
Heavy-duty ——— Light-duty ———  
Medium-duty ——— Unimproved dirt ———  
State Route

USGS  
HISTORICAL FILE  
TOPOGRAPHIC DIVISION

CUT OFF, LA.  
SE/4 CUT OFF 15' QUADRANGLE  
N2930—W9015/7.5

1963

AMS 7943 III SE—SERIES V885

FEB 10 1976