

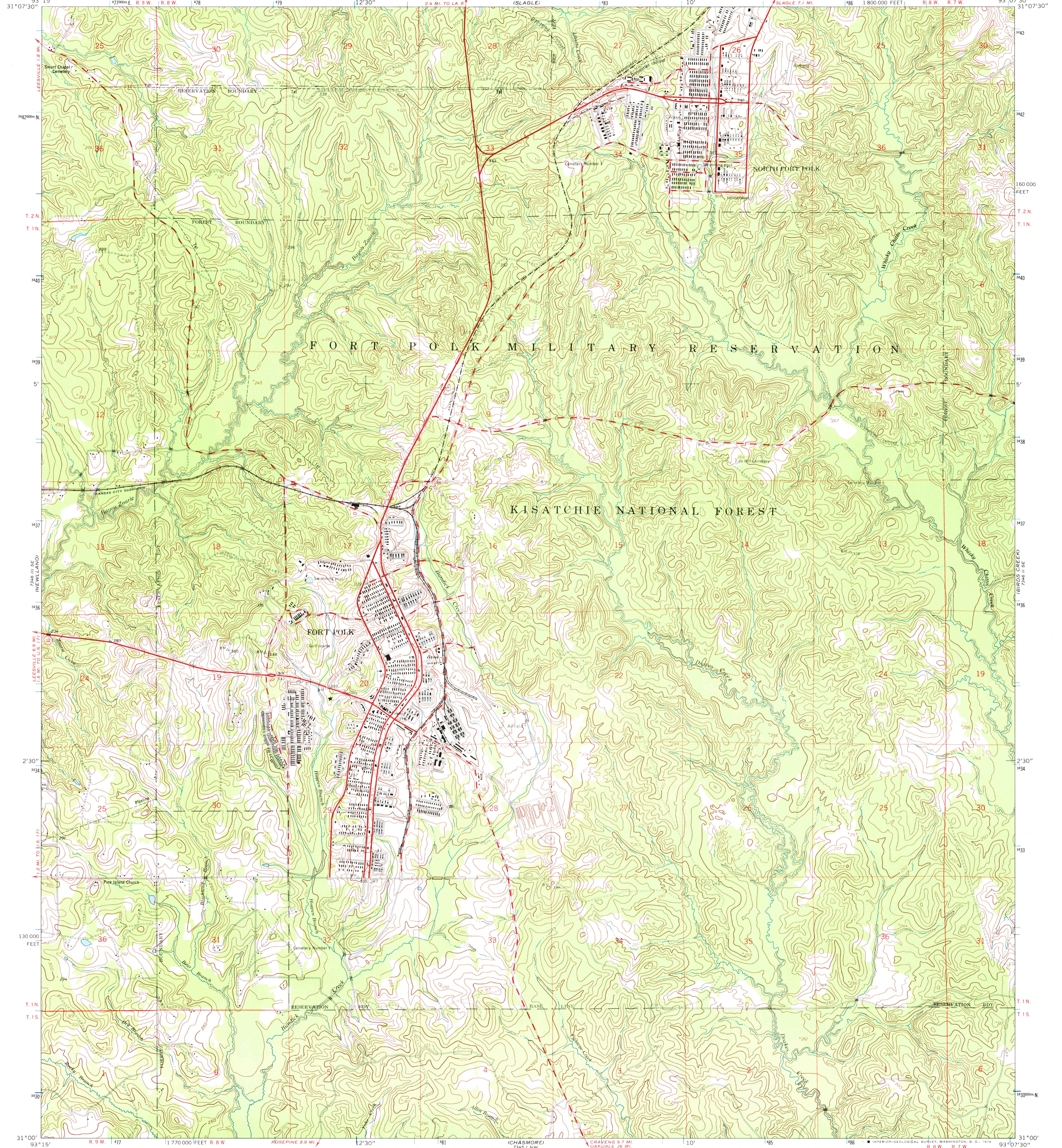
(LEESVILLE)

UNITED STATES
DEPARTMENT OF THE INTERIOR
GEOLOGICAL SURVEY

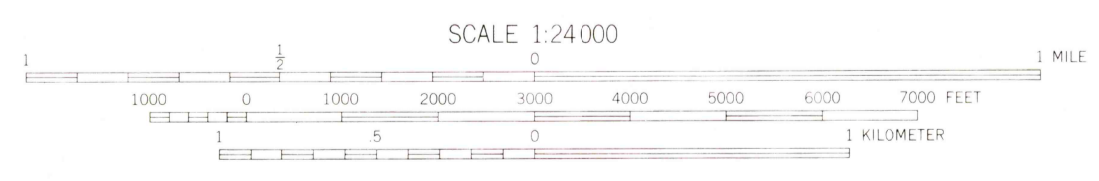
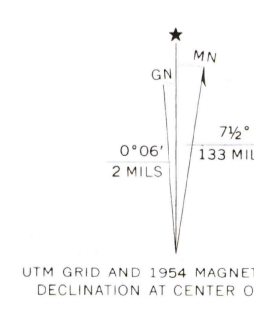
UNITED STATES
DEPARTMENT OF THE ARMY
CORPS OF ENGINEERS

FORT POLK QUADRANGLE
LOUISIANA—VERNON PARISH
7.5 MINUTE SERIES (TOPOGRAPHIC)
SW/4 SLAGLE 15' QUADRANGLE

(BURTON CREEK)



Mapped by the Army Map Service
Published for civil use by the Geological Survey
Control by USGS, USC&GS, USCE, and Louisiana Geodetic Survey
Topography from aerial photographs by photogrammetric methods
Aerial photographs taken 1951. Field check 1954
Polyconic projection. 1927 North American datum
10,000-foot grid based on Louisiana coordinate system, north zone
1000-meter Universal Transverse Mercator grid ticks,
zone 15, shown in blue
Unchecked elevations are shown in brown



CONTOUR INTERVAL 10 FEET
DASHED LINES REPRESENT 5-FOOT CONTOURS
DATUM IS MEAN SEA LEVEL

THIS MAP COMPLIES WITH NATIONAL MAP ACCURACY STANDARDS
FOR SALE BY U. S. GEOLOGICAL SURVEY, DENVER, COLORADO 80225 OR WASHINGTON, D. C. 20242,
AND BY THE STATE OF LOUISIANA, DEPARTMENT OF PUBLIC WORKS, BATON ROUGE, LOUISIANA 70804
A FOLDER DESCRIBING TOPOGRAPHIC MAPS AND SYMBOLS IS AVAILABLE ON REQUEST



ROAD CLASSIFICATION

Heavy-duty	Light-duty
Medium-duty	Unimproved dirt
	State Route

FORT POLK, LA.
SW/4 SLAGLE 15' QUADRANGLE
N3100—W9307.5/7.5

1954
AMS 7346 II SW—SERIES W885

JAN 1 1954

1090