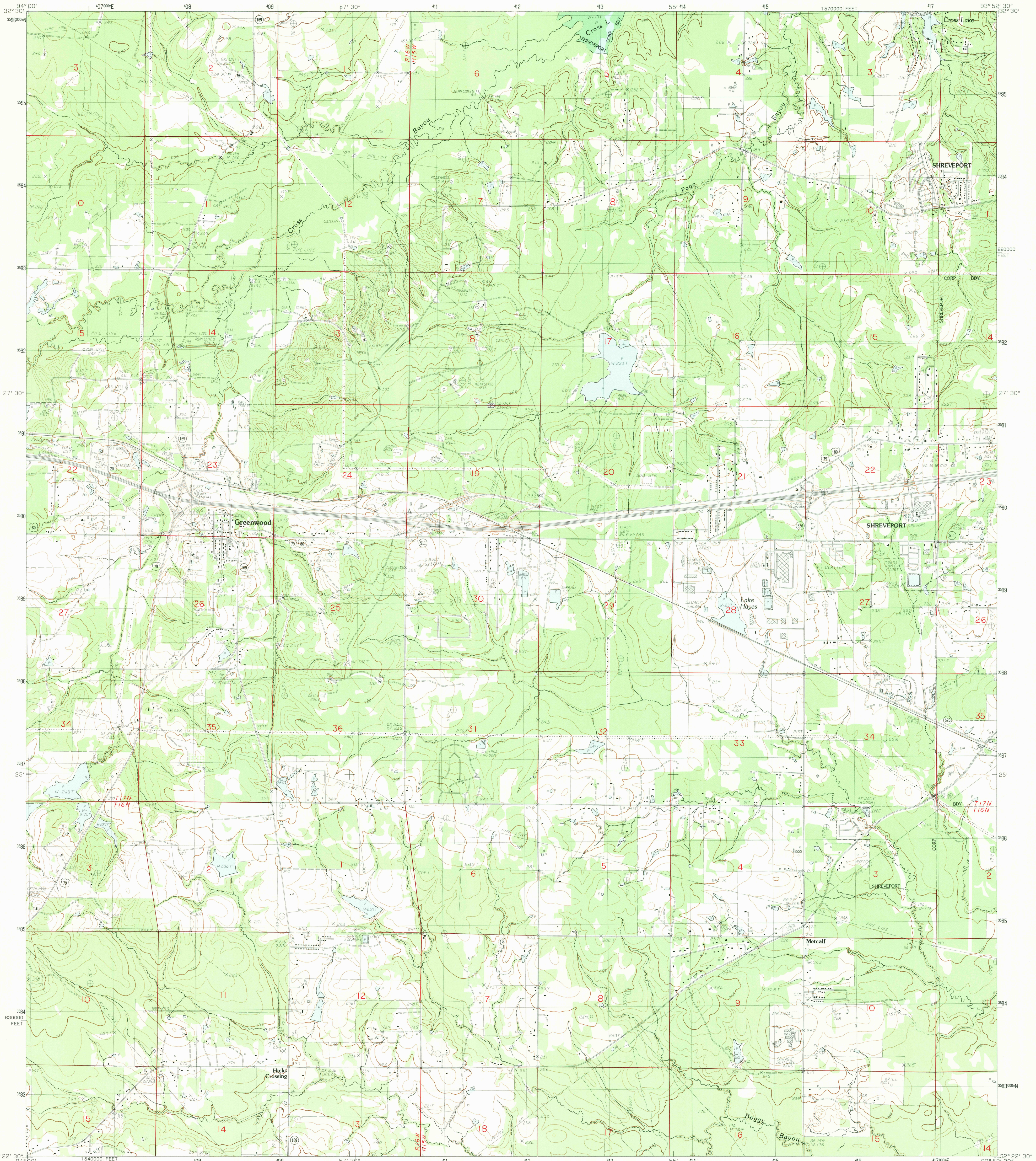


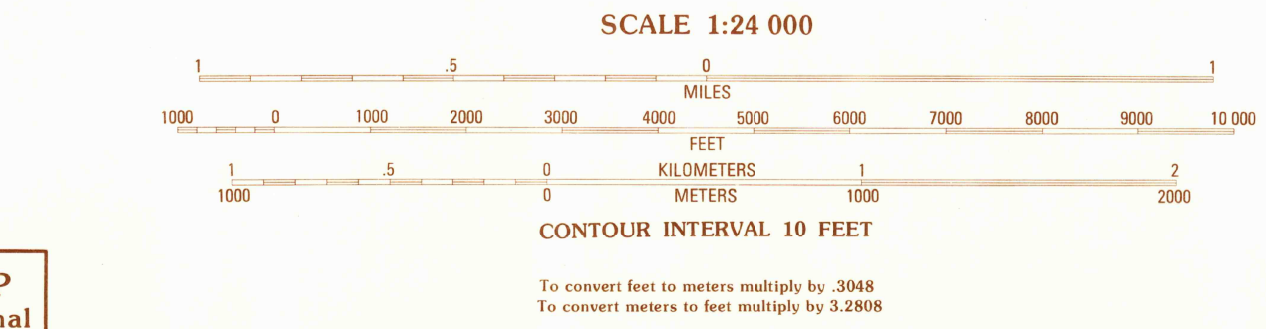
UNITED STATES
DEPARTMENT OF THE INTERIOR
GEOLOGICAL SURVEY

GREENWOOD QUADRANGLE
LOUISIANA—CADDO PARISH
7.5 MINUTE SERIES (TOPOGRAPHIC)



PRODUCED BY THE UNITED STATES GEOLOGICAL SURVEY
CONTROL BY USGS, NOS/NOAA, LOUISIANA HIGHWAY DEPARTMENT
COMPILED FROM AERIAL PHOTOGRAPHS TAKEN 1976
FIELD CHECKED 1977. MAP EDITED 1982
PROJECTION LAMBERT CONFORMAL CONIC
GRID: 1000-METER UNIVERSAL TRANSVERSE MERCATOR ZONE 15
10,000-FOOT STATE GRID TICKS LOUISIANA, NORTH ZONE
UTM GRID DECLINATION 7°30' WEST
1982 MAGNETIC NORTH DECLINATION 5°30' EAST
VERTICAL DATUM NATIONAL GEODETIC VERTICAL DATUM OF 1929
HORIZONTAL DATUM 1927 NORTH AMERICAN DATUM
To place on the predicted North American Datum of 1983,
move the projection lines as shown by dashed corner ticks
(12 meters south and 18 meters east)

PROVISIONAL MAP
Produced from original
manuscript drawings. Information
shown as of date of
field check.



QUADRANGLE LOCATION

1	2	3
4	5	6
7	8	9

1 Latex
2 Blanchard
3 North Highlands
4 Washom
5 Shreveport West
6 Panola
7 Spring Ridge
8 Stonewall

ADJOINING 7.5' QUADRANGLE NAMES

ROAD LEGEND

Improved Road
Unimproved Road
Trail

Interstate Route U.S. Route State Route

GREENWOOD, LOUISIANA
PROVISIONAL EDITION 1982

32093-D8-TF-024