

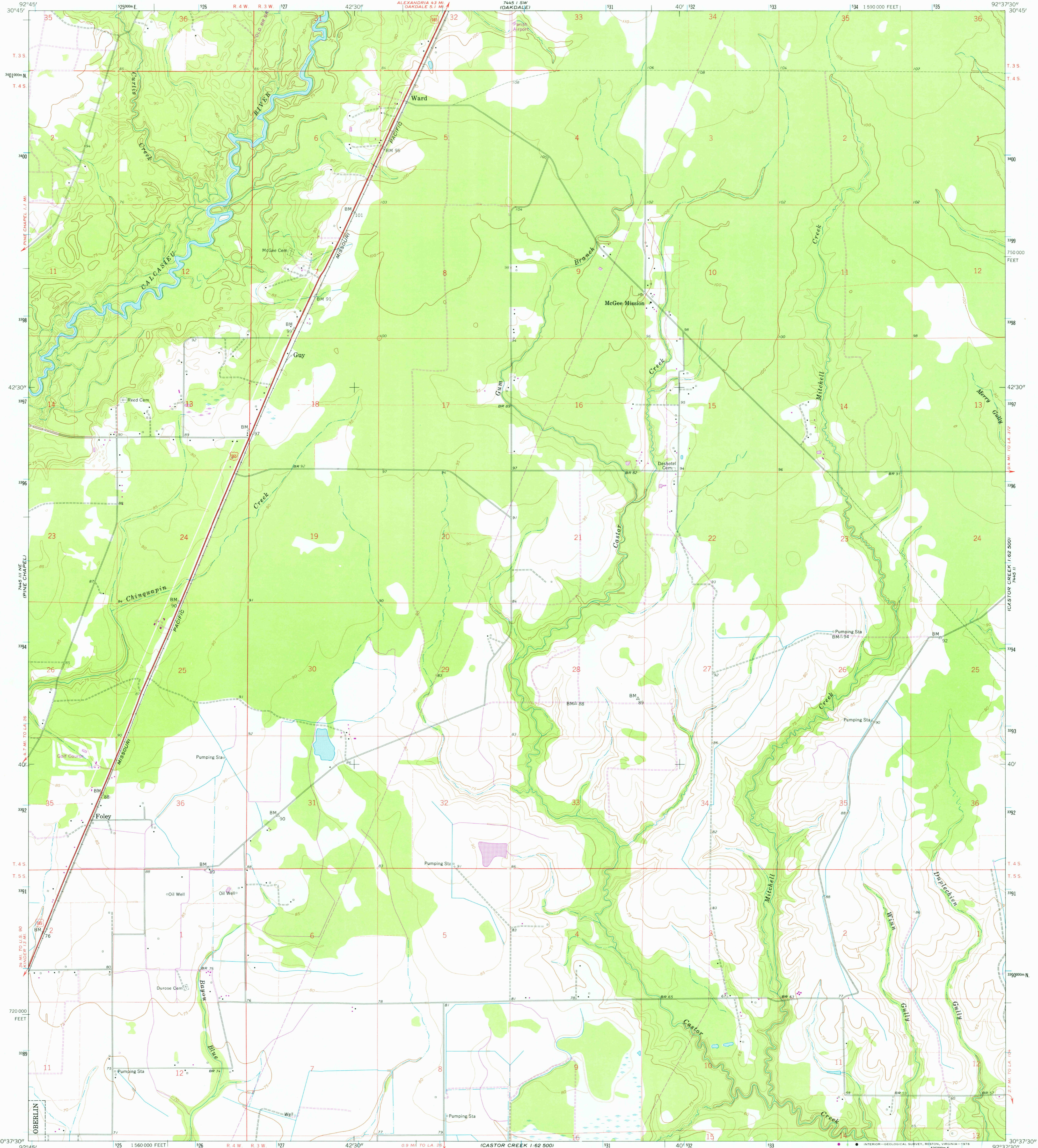
7445 II
OBERLIN
1:62 500

UNITED STATES
DEPARTMENT OF THE INTERIOR
GEOLOGICAL SURVEY

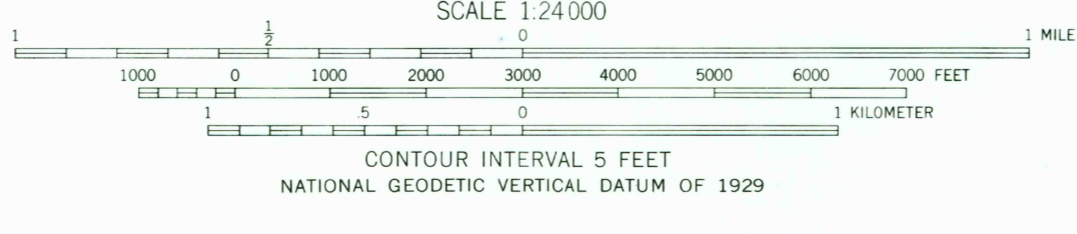
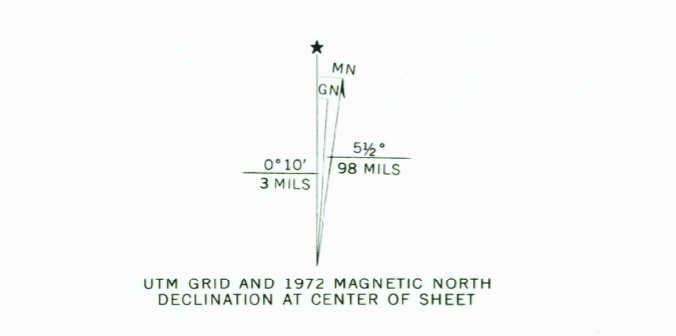
STATE OF LOUISIANA
DEPARTMENT OF PUBLIC WORKS
BATON ROUGE

GUY QUADRANGLE
LOUISIANA—ALLEN PARISH
7.5 MINUTE SERIES (TOPOGRAPHIC)
NW/4 CASTOR CREEK 15' QUADRANGLE

7445 I SE
(BEAUFORT)



Mapped, edited, and published by the Geological Survey
Control by USGS, USC&GS, and Louisiana Geodetic Survey
Culture and drainage in part compiled from aerial photographs
taken 1951. Topography by planetable surveys 1947 and 1951
Revised 1960
Polyconic projection. 1927 North American datum
10,000-foot grid based on Louisiana coordinate system, south zone
1000-meter Universal Transverse Mercator grid ticks,
zone 15, shown in blue
Fine red dashed lines indicate selected fence and field lines where
generally visible on aerial photographs. This information is unchecked
Revisions shown in purple compiled from aerial photographs
taken 1972. This information not field checked



THIS MAP COMPLIES WITH NATIONAL MAP ACCURACY STANDARDS
FOR SALE BY U. S. GEOLOGICAL SURVEY, DENVER, COLORADO 80225, OR RESTON, VIRGINIA 22092
AND STATE OF LOUISIANA, DEPARTMENT OF PUBLIC WORKS, BATON ROUGE, LOUISIANA 70804
A FOLDER DESCRIBING TOPOGRAPHIC MAPS AND SYMBOLS IS AVAILABLE ON REQUEST

ROAD CLASSIFICATION
Heavy-duty ——— Light-duty ———
Unimproved dirt - - - - - U. S. Route

USGS
Historical File
Topographic Division

GUY, LA.
NW/4 CASTOR CREEK 15' QUADRANGLE
N 3037.5—W 9237.5/7.5
1960
PHOTOREVISED 1972
AMS 7445 II NW—SERIES V885

NOV 23 1976